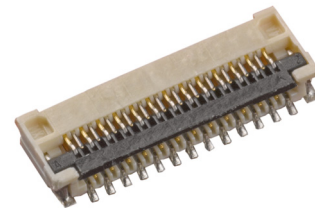
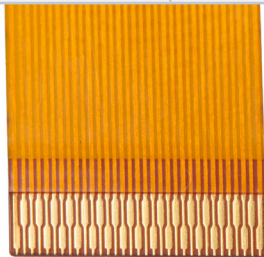


PREMO-FLEX CABLES AND EASY-ON CONNECTORS:

A Complete Flat Flexible Connectivity Solution from Molex

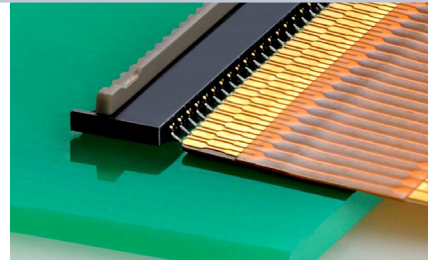
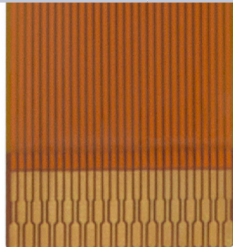
0.25MM PITCH

Premo-Flex Cable Jumpers	Easy-On Connectors	Features
15014	502078 , 503300 , 503320	Gold Plating



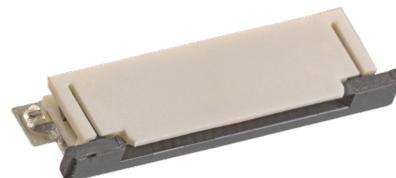
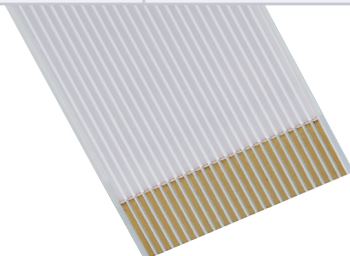
0.30MM PITCH

Premo-Flex Cable Jumpers	Easy-On Connectors	Features
15015	502598	Gold Plating



0.50MM PITCH

Premo-Flex Cable Jumpers	Easy-On Connectors	Features
15166 , 15266 , 98266 , 15366	52435 , 54104 , 52437 , 54132 , 501951 , 52745 , 52746 , 52559	Tin Plating, Tin Plating, Shielded
15020	52435 , 54104 , 52437 , 54132 , 501951 , 52745 , 52746 , 52559 , 503480 , 505110	Gold Plating
15018	505110	Gold Plating, With Ears
15016	200485	Gold Plating, One-Touch
15021	502244 , 502231	Gold Plating; LVDS
15022	501786 , 501864	Gold Plating; LVDS
15023	503908	Gold Plating; LVDS

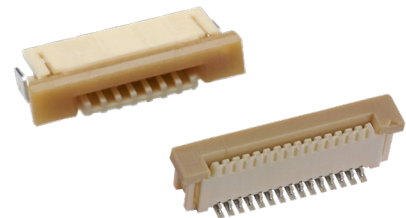


PREMO-FLEX CABLES AND EASY-ON CONNECTORS:

A Complete Flat Flexible Connectivity Solution from Molex

1.00MM PITCH

Premo-Flex Cable Jumpers	Easy-On Connectors	Features
15039	52207 , 52271 , 52610 , 200528	Gold Plating
15167	52207 , 52271 , 52610	Tin Plating
15267	52207 , 52271 , 52610	Tin Plating
98267	52207 , 52271 , 52610	Tin Plating



MARKETS/APPLICATIONS

Consumer

- Digital cameras
- Video cameras
- Mobile devices
- Portable audio equipment
- GPS devices
- Fingerprint/voice recognition
- LCDs
- Personal navigation equipment
- VR/AR devices
- UAV (drone)

Home Appliance

- Flat-panel TVs
- Refrigerators
- Vacuums

Medical

- Wearable devices
- Patient-monitoring equipment

Automotive

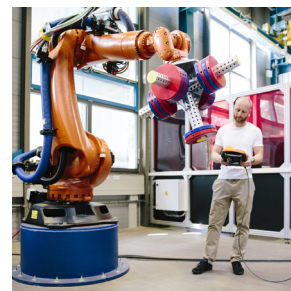
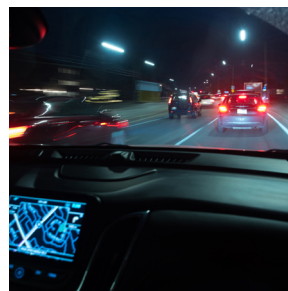
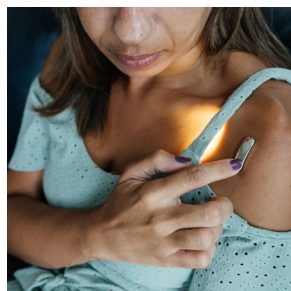
- Infotainment devices
- Display audio equipment
- Car navigation devices

Data and Computing

- Optical disk drives
- Tablets and notebooks
- PCs
- Printers and copiers

Industrial

- Robotics



www.molex.com/product/premoflex_ffc-fpc.html

www.molex.com/link/easyon.html