

Datenblatt / Datasheet

Low Profile Antenne GPS 1890 LP/P/SMA/SMA/1.0

Erz-Nr. / Ord. code
920 061-588

GPS / CELLULAR

GPS 1890 LP/P/SMA/SMA/0.3

Erz-Nr. / Ord. code
920 061-589

- Empfangsantenne für GPS-Satellitensignale zur Verarbeitung in Navigationssystemen, Flottenmanagementsysteme, Verkehrsführungssysteme und Fahrzeugortung. In Kombination mit flacher Cellular-Telefonantenne
 - Geringe Bauhöhe ca. 21 mm / 0.8 in.
 - Abdeckung europäischer und US-amerikanischer Cellular-Telefon-Frequenzen
 - Montage auf unterschiedlichsten Oberflächen (z.B. Glas, Kunststoff, Metall ...)
-
- *Reception antenna for GPS satellite signals for processing in navigation systems, fleet management systems, traffic guidance systems and vehicle location. In combination with low profile cellular phone antenna*
 - *Low body height ca.21 mm / 0.8 in.*
 - *Coverage of European and American cellular phone frequencies*
 - *Mounting on several surfaces (e.g. glass, plastics, metal ...)*



Änderungen vorbehalten / Subject to alterations

Technische Daten / Technical data

Abmessungen / Dimensions (ohne Strahler, without rod)	100 mm x 66 mm x 21 mm / 3.9 x 2.6 x 0.8 in.	
Gewicht / Weight	ca. 139 g / 4.9 oz.	
Temperaturbereich / Temperature range	-40 - +80°C / -40 - +176 °F	
Schutzklasse / Protection class	IP66 (acc. IEC 60529)	
GPS		
Frequenzbereich / Frequency range	1,57542 GHz ± 1.023 MHz, (L1-band)	
Impedanz / Impedance	50 Ohm	
VSWR	≤ 2,0	
Gewinn / Gain	2 dBic ¹⁾	
Polarisation / Polarization	RHCP	
Verstärkung / Amplification	27 ± 3 dB	
Rauschmaß / Noise figure (50 Ohm)	< 2,5 dB	
Betriebsspannung / Voltage supply	3 - 5,5 VDC (ferngespeist, remote fed)	
Stromaufnahme / Current consumption	< 25 mA bei/at 5 V	
CELLULAR		
Frequenzbereich / Frequency range	GSM 850:	824 - 894 MHz
	GSM 900:	880 - 960 MHz
	GSM 1800:	1710 - 1880 MHz
	GSM 1900:	1850 - 1990 MHz
	UMTS:	1920 - 2170 MHz
Impedanz / Impedance	50 Ohm	
VSWR	≤ 2,0	
Gewinn / Gain	0 dBi ²⁾	
Polarisation / Polarization	linear, vertikal / linear, vertical	
Belastbarkeit / Load capacity	max.	10 W gepulst, pulsed acc. GSM standard
Kabel und Anschluss / Cable and Connector		
Kabel / Cable	...-588:	RG 174 / 1000 +10 mm / 39.4+0.4 In.
	...-589:	RG 174 / 300 +10 mm / 11.8+0.4 In.
Anschluss / Connector	GPS:	SMA male
	Cellular:	SMA male.

¹⁾ dBic: gemessen gegenüber Isotropen-Strahler, zirkulare Polarisation / referenced to an isotropic radiator, circular polarisation

²⁾ dBi: gemessen gegenüber Isotropen-Strahler / referenced to an isotropic radiator

Datenblatt / *Datasheet*

GPS 1890 LP/P/SMA/SMA/1.0

Erz-Nr. / Ord. code

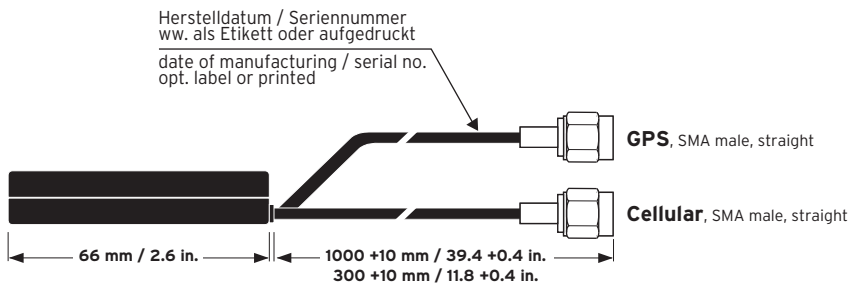
920 061-588

Änderungen vorbehalten / *Subject to alterations*

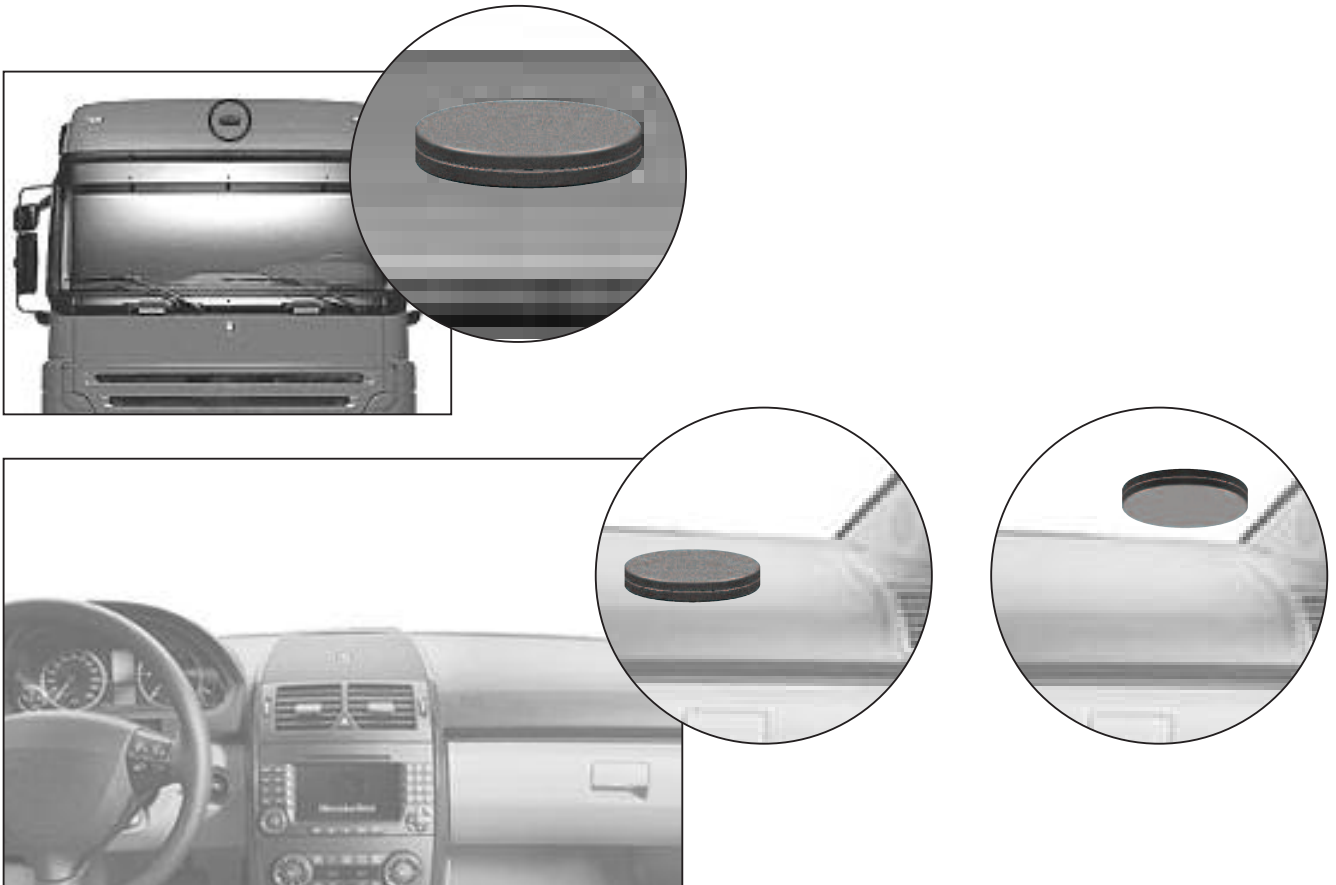
GPS 1890 LP/P/SMA/SMA/0.3

Erz-Nr. / Ord. code

920 061-589



Montage / *Installation*



Datenblatt / Datasheet

Änderungen vorbehalten /
Subject to alterations

Montage auf Metallplatte /
Installation on groundplane

Antennendiagramme
Antenna diagrams

Typisches VSWR / Typical VSWR

GPS 1890 LP/P/SMA/SMA/1.0

Erz-Nr. / Ord. code

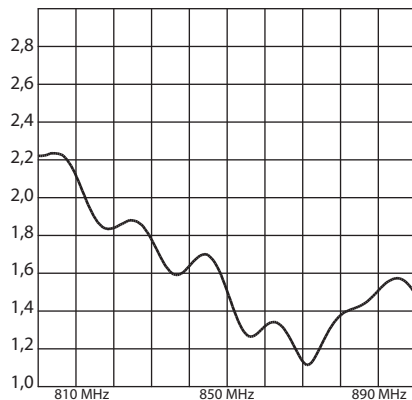
920 061-588

GPS 1890 LP/P/SMA/SMA/0.3

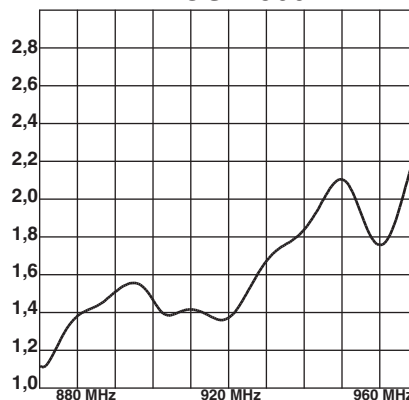
Erz-Nr. / Ord. code

920 061-589

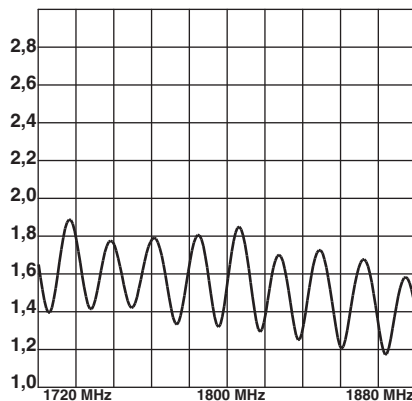
GSM 850



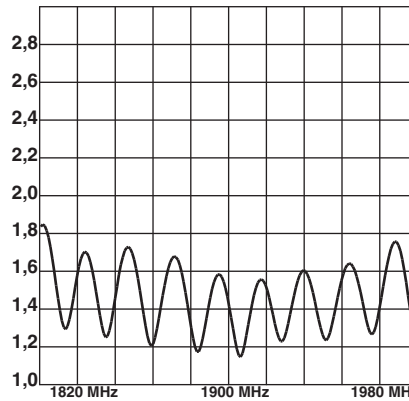
GSM 900



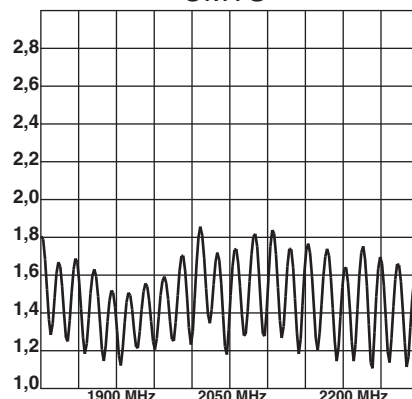
GSM 1800



GSM 1900



UMTS



Datenblatt / Datasheet

Änderungen vorbehalten /
Subject to alterations

Montage Kleben auf Glas /
Installation stick on glass

Antennendiagramme
Antenna diagrams

Typisches VSWR / Typical VSWR

GPS 1890 LP/P/SMA/SMA/1.0

Erz-Nr. / Ord. code

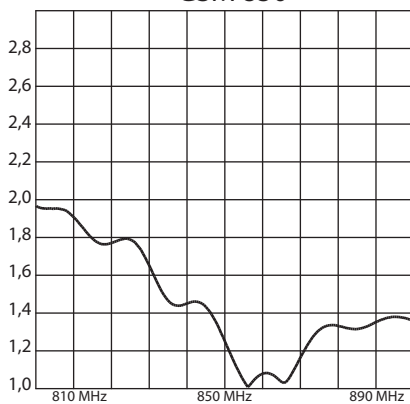
920 061-588

GPS 1890 LP/P/SMA/SMA/0.3

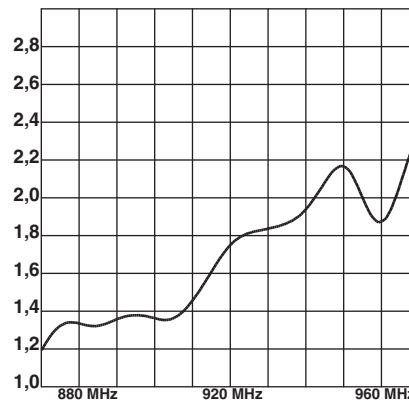
Erz-Nr. / Ord. code

920 061-589

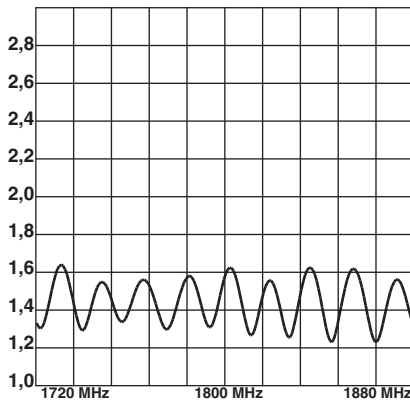
GSM 850



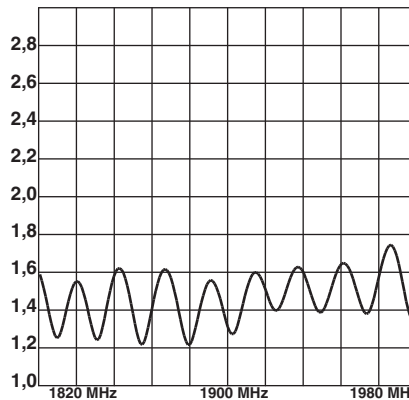
GSM 900



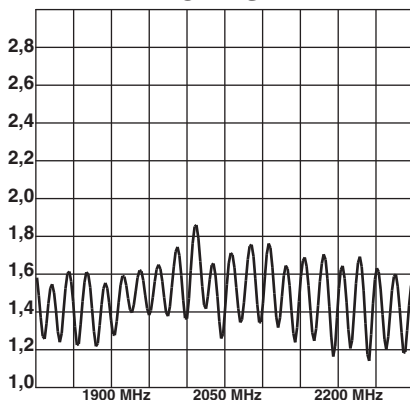
GSM 1800



GSM 1900



UMTS



Datenblatt / Datasheet

Änderungen vorbehalten /
Subject to alterations

Montage zwischen 2 Metallstreben /
Installation between 2 metal bars

GPS 1890 LP/P/SMA/SMA/1.0

Erz-Nr. / Ord. code

920 061-588

Antennendiagramme
Antenna diagrams

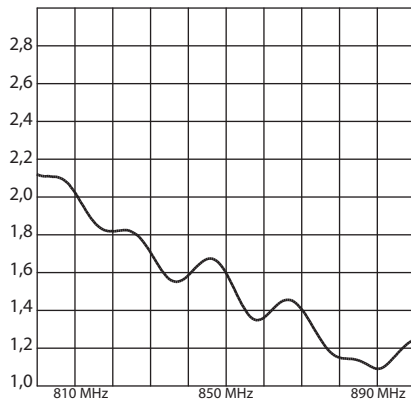
GPS 1890 LP/P/SMA/SMA/0.3

Erz-Nr. / Ord. code

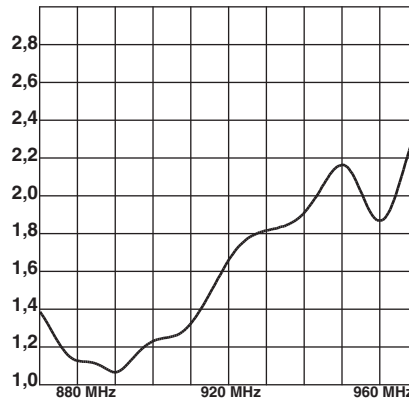
920 061-589

Typisches VSWR / Typical VSWR

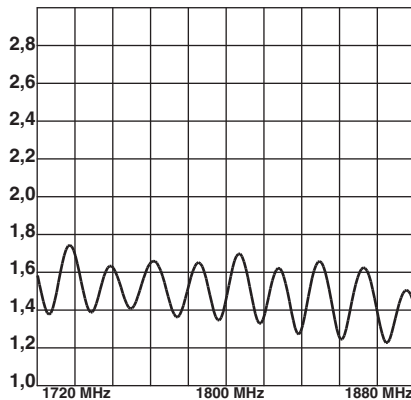
GSM 850



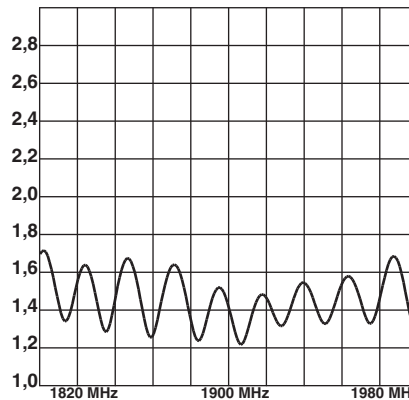
GSM 900



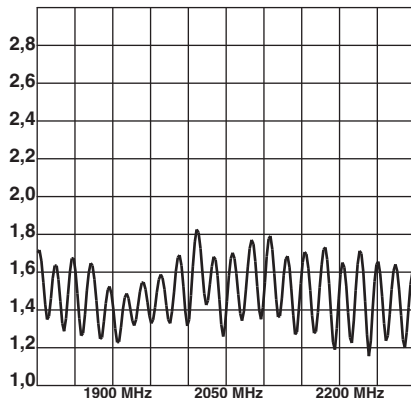
GSM 1800



GSM 1900



UMTS



GPS 1890 LP/P/SMA/SMA/1.0

Erz-Nr. / Ord. code

920 061-588

Änderungen vorbehalten / *Subject to alterations*

GPS 1890 LP/P/SMA/SMA/0.3

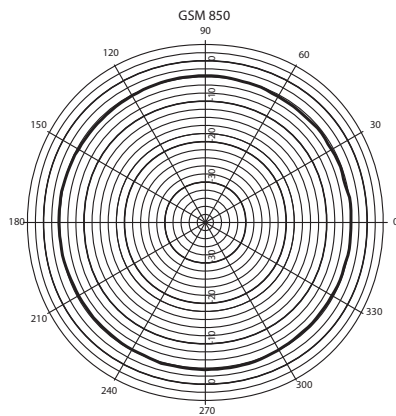
Erz-Nr. / Ord. code

920 061-589

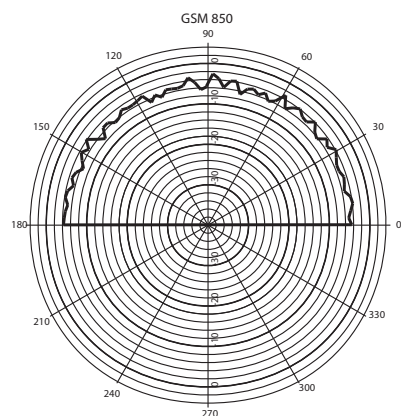
Antennendiagramme
Antenna diagrams

Typisches Strahlungsdiagramm / *Typical radiation pattern*

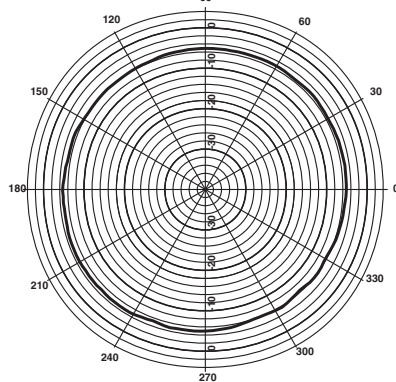
horizontal / Azimuth



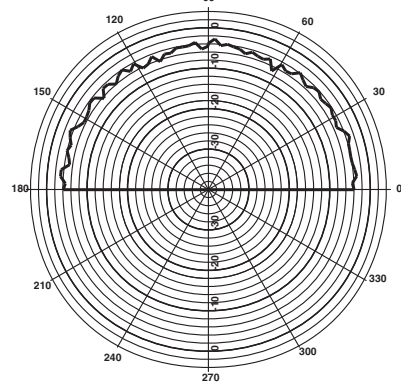
vertikal / Elevation



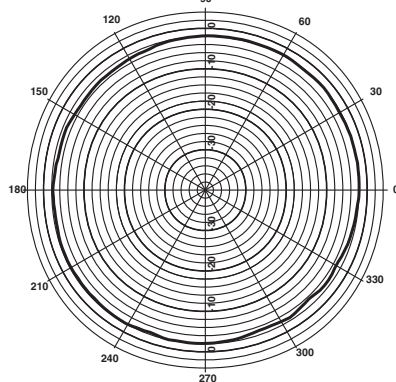
GSM 900



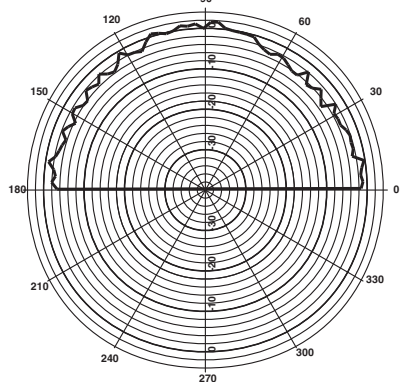
GSM 900



GSM 1800



GSM 1800



GPS 1890 LP/P/SMA/SMA/1.0

Erz-Nr. / Ord. code

920 061-588

Änderungen vorbehalten / *Subject to alterations*

Antennendiagramme *Antenna diagrams*

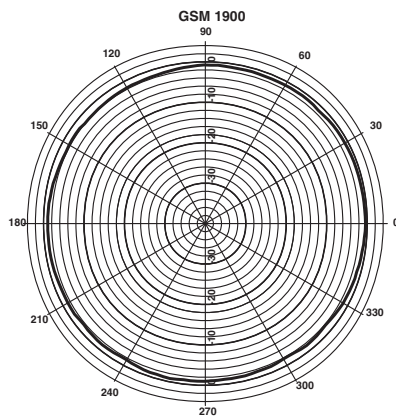
GPS 1890 LP/P/SMA/SMA/0.3

Erz-Nr. / Ord. code

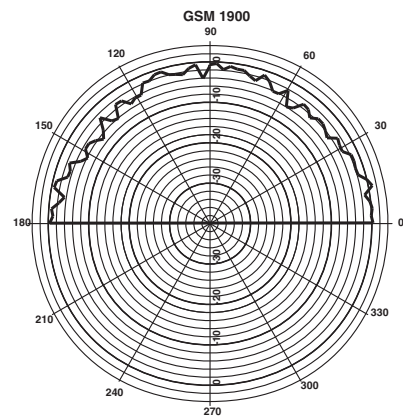
920 061-589

Typisches Strahlungsdiagramm / *Typical radiation pattern*

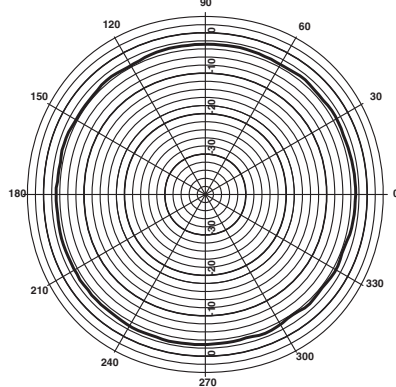
horizontal / *Azimuth*



vertikal / *Elevation*



UMTS



UMTS

