

RV16AF20xx

Dreh-Potentiometer, Lötanschluss, Rundwelle/gezahnt

date/contact: 220518/CHA
 finishing: TKI
 last update: -
 drawing: 93525
 unit: mm
 tolerance: -
 page: 1/1

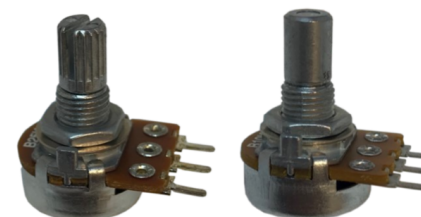
EVE GmbH
 Hollefeldstr. 16
 48282 Emsdetten
 Tel.: +49 (0) 25 72 / 93 51 - 0
 Fax: +49 (0) 25 72 / 93 51 - 24
 www.eve.de • info@eve.de

konform
RoHS
 compliant

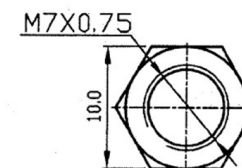
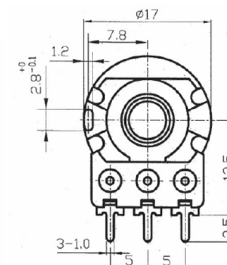
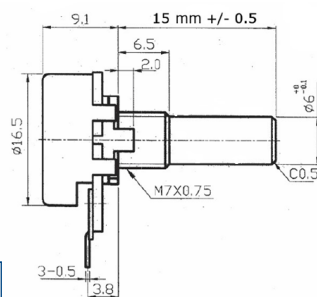
eve
 GmbH
 ELEKTRONIK DISTRIBUTION



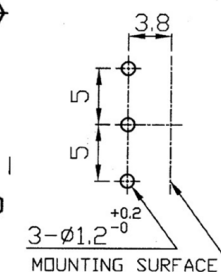
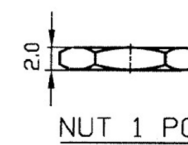
Ausführung / construction: Mono / single turn
 Welle / shaft: Ø 6 mm, L = 15 mm Rundwelle oder
 Ø 6 mm, L = 15 mm gezahnt (18 Zähne)
 Buchse / bushing: M7 x 0,75
 Drehbereich / rotation angle: 300° ± 5 %
 Belastbarkeit / rated wattage: lin. 0,2 W / log 0,05 W
 Anschluss: Printanschluss
 Kontakte: SPCC, kalt gewalzter Stahl, vernickelt / Cold rolled steel sheets, nickel plated



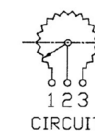
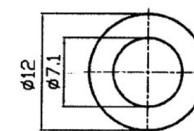
ALPHA POT 16 RV16A-20



MOUNTING HOLE DETAIL
 (VIEWPOINT OF SHAFT)



● 300° ROTATION
 MONO UNIT



CIRCUIT

Order Information

Artikelbez.	Wert	Widerstandskurve
RV16AF20B5K	5 kΩ	linear
RV16AF20B10K	10 kΩ	linear
RV16AF20B50K	50 kΩ	linear
RV16AF20KB5K	5 kΩ	linear
RV16AF20KB10K	10 kΩ	linear
RV16AF20KB50K	50 kΩ	linear
RV16AF20KB100K	100 kΩ	linear

