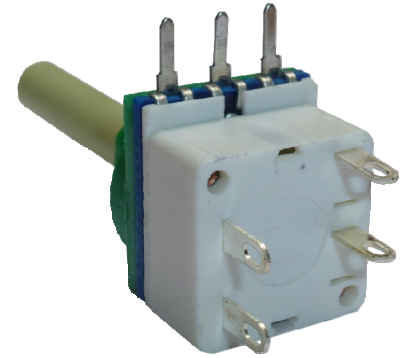




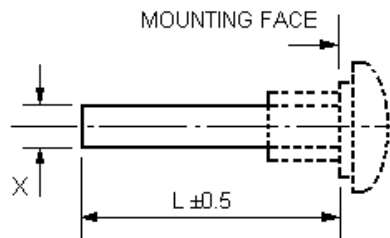
Entsprechend RoHS
(EG2002/95/EC)
Prüfzeichen EN 61058-1



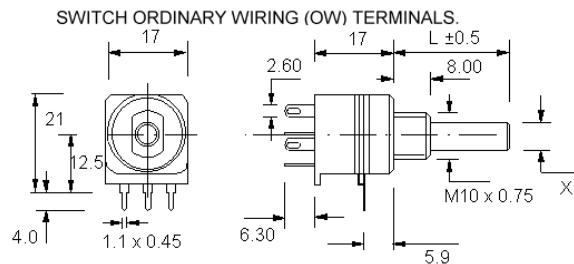
Ausführung / construction: ISO, Drehschalter / rotary switch, 2-pol ON/OFF
Welle / shaft: \varnothing 6 mm, L = 35 mm
Buchse / bushing: M10 x 0,75
Drehbereich / rotation angle: 300°

ALPHASTAT 16 PC16ECO/B4OW2S

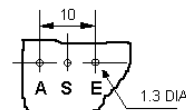
Printausführung / for printed circuits (PC)
Lötanschluss / solder terminals
Conductive Plastic



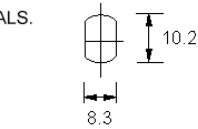
Type	Desc. (X)	L (mm)
F21	\varnothing 4 mm	14 - 35
F1	\varnothing 6 mm	14 - 65



POTENTIOMETER with PRINTED CIRCUIT (PC) TERMINALS.



Viewed on component side.



Panel cutout for bush

	4 mm Welle F21-PC			6 mm Welle F1-PC			4 mm Welle F21-OW			6 mm Welle F1-OW		
	lin.	poslog	neglog	lin.	poslog	neglog	lin.	poslog	neglog	lin.	poslog	neglog
100 R												
220 R												
470 R												
1 k				7512*								
2,2 k				7513*								
4,7 k				7514*								
10 k				7515*								
22 k				7516*								
47 k				7517*								
100 k				7518*								
220 k				7519*								
470 k				7520*								
1 M				7521*								
2,2 M												
4,7 M												

* lagermäßige Ausführungen (unverbindlich) \\ * in stock (non-binding)