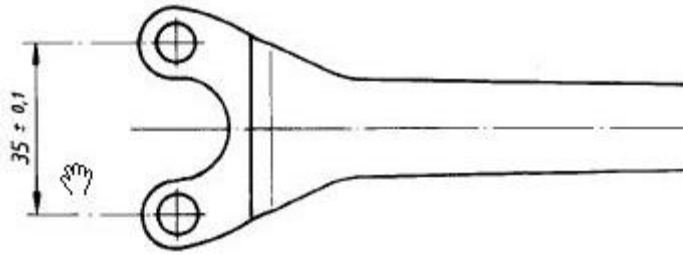


Zweilochschlüssel

GEKRÖPFT

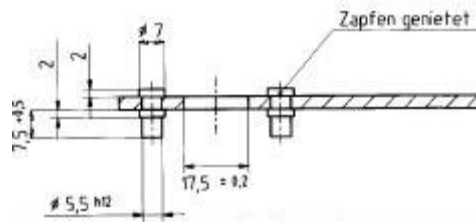
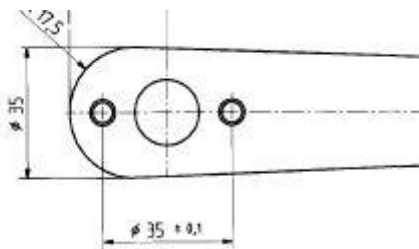
... für Schleiftöpfe 1.607.950.004

491881



... für Diamant- und Hartmetallschleifköpfe 3.607.950.017

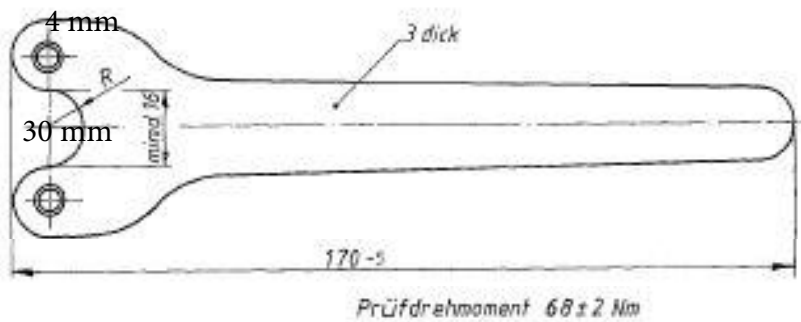
513770



GERADE

... für alle Einhandwinkelschleifer 1.607.950.043

491886



... für alle Zweihandwinkelschleifer 1.607.950.048

