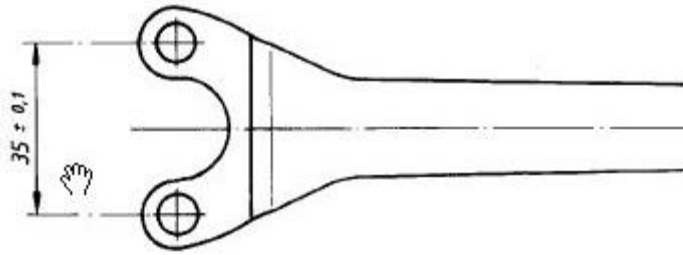


# Zweilochschlüssel

## GEKRÖPFT

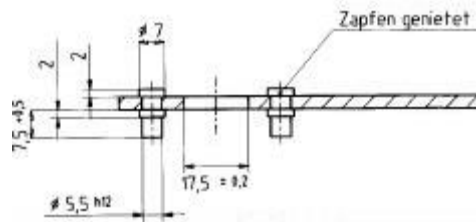
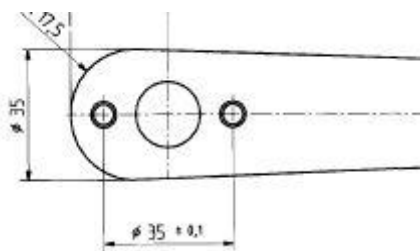
... für Schleiftöpfe 1.607.950.004

# 491881



... für Diamant- und Hartmetallschleifköpfe 3.607.950.017

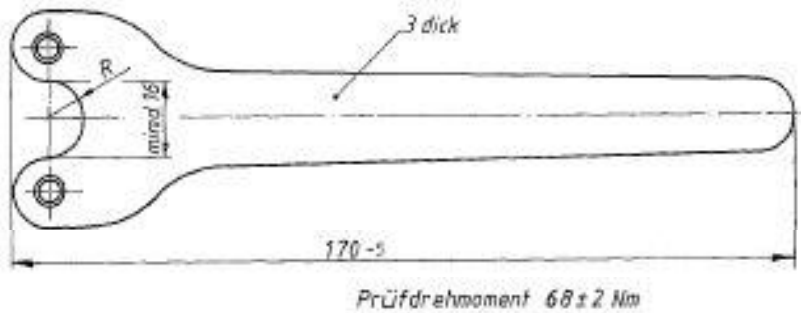
# 513770



## GERADE

... für alle Einhandwinkelschleifer 1.607.950.043

# 491886



... für alle Zweihandwinkelschleifer 1.607.950.048

# 491890

