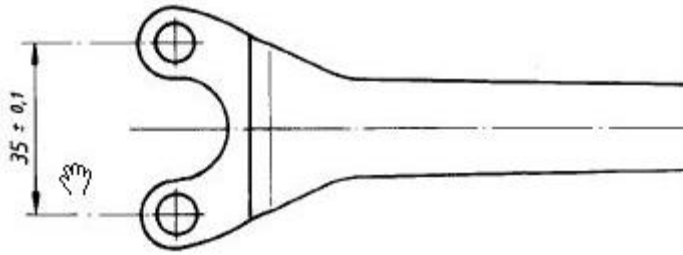


Zweilochschlüssel

GEKRÖPFT

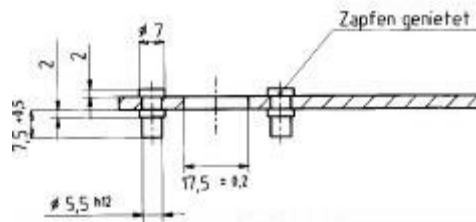
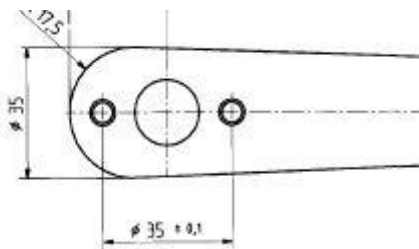
... für Schleiftöpfe 1.607.950.004

491881



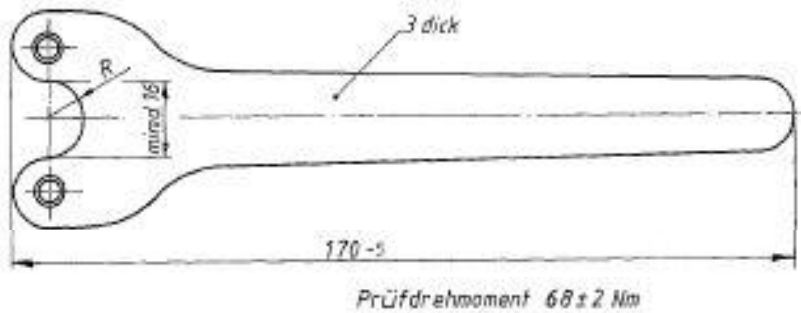
... für Diamant- und Hartmetallschleifköpfe 3.607.950.017

513770



GERADE

... für alle Einhandwinkelschleifer 1.607.950.043



... für alle Zweihandwinkelschleifer 1.607.950.048

