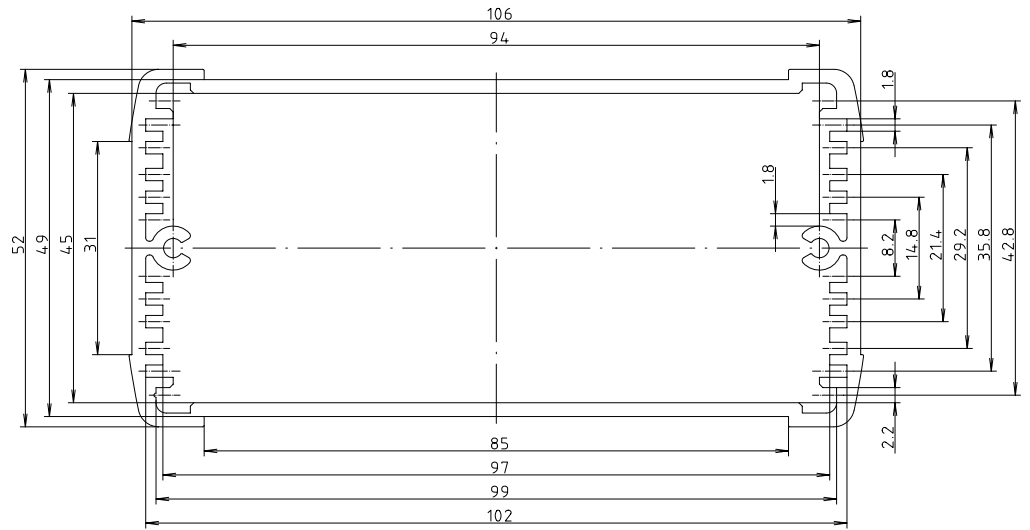
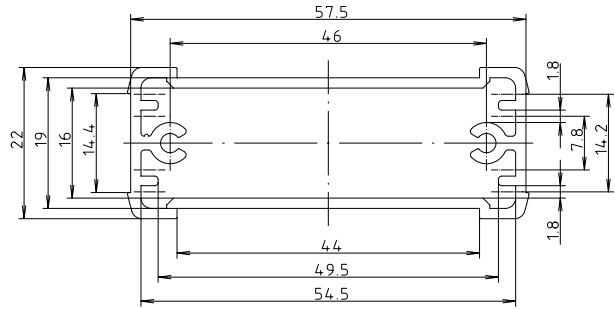




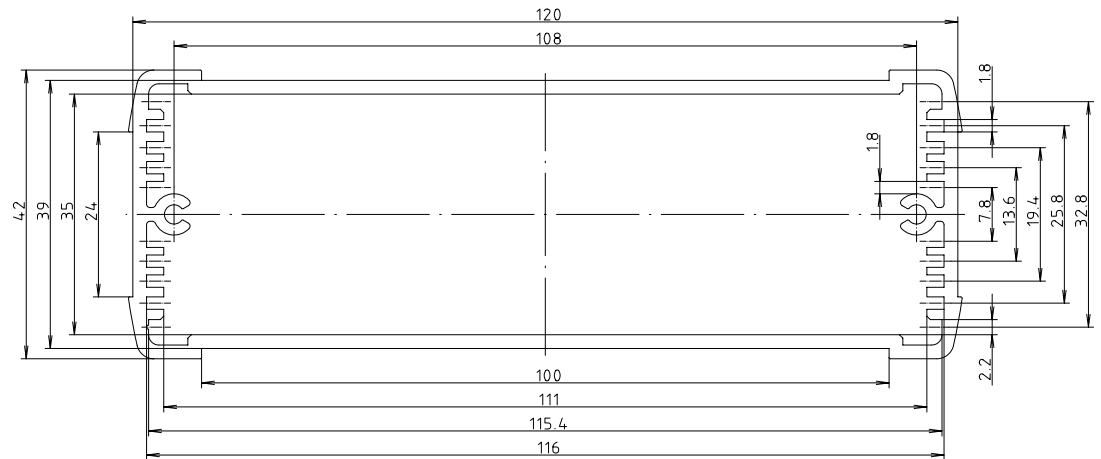
ELP 1050



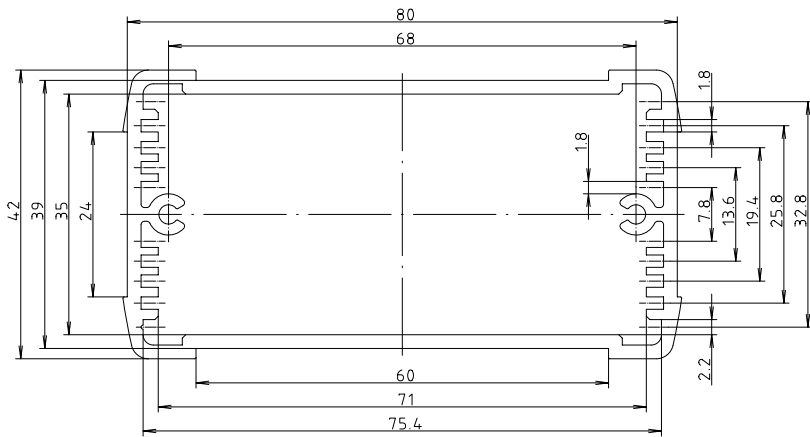
ELP 620



ELP 1240



ELP 840

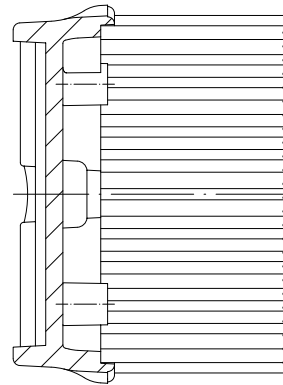
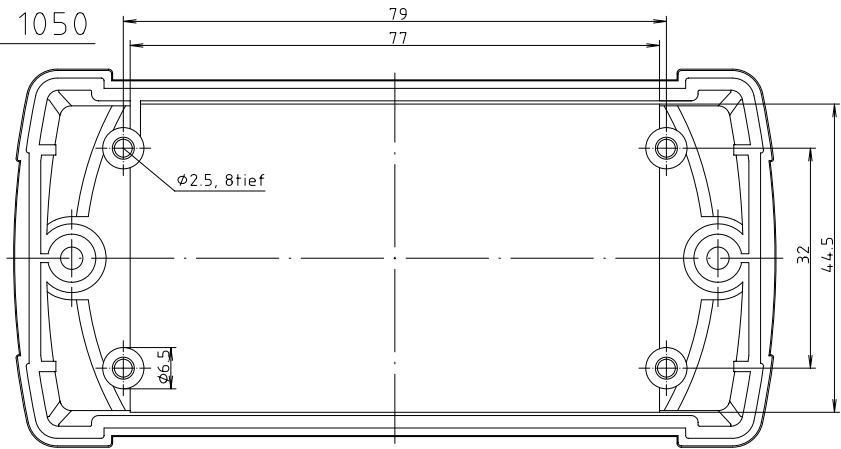


"Schutzvermerk nach DIN 34 beachten"

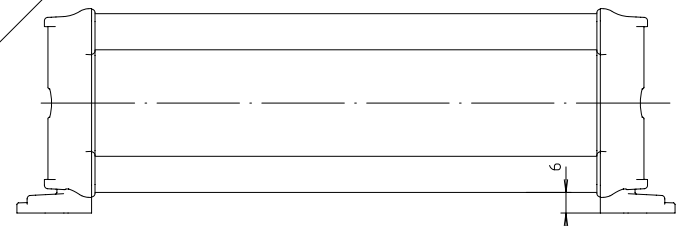
Maßstab : 2:1		
Zchn.Nr: 2K 5340.056.01		
Artikel: BOS-Ecoline ELP		
Katalogzeichnung		
A.Nr:	Datum:	 A Phoenix Mecano Company
	Datum:	
DISK : 2 802 502		
Datum: 23.07.2004 HR		



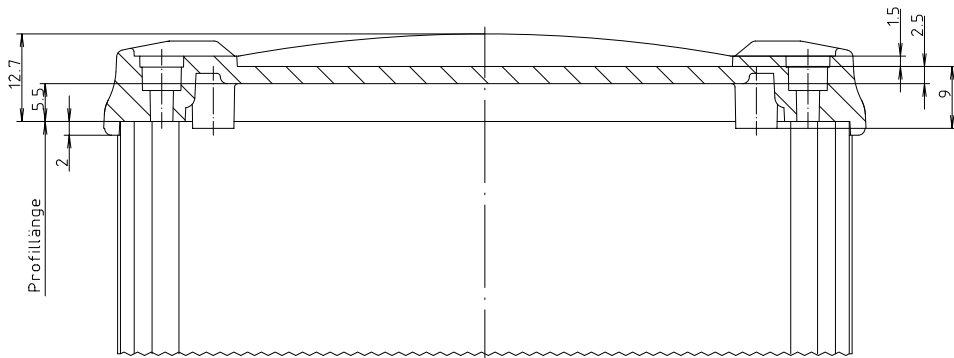
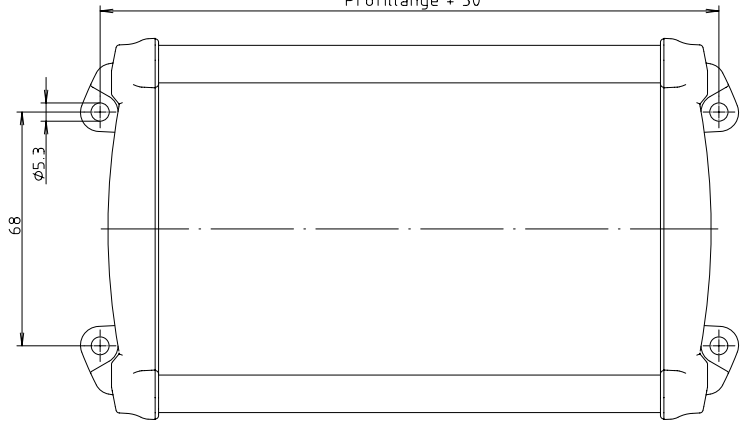
ELD(W) 1050



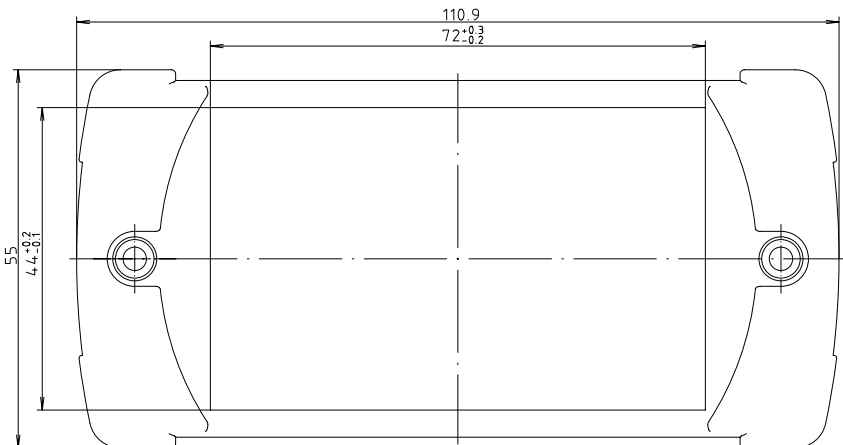
ELD(W) 1050



Profillänge + 30



Profillänge



"Schutzvermerk nach DIN 34 beachten"

Maßstab : 2:1 (1:1)		
Zchn.Nr: 2K 5340.061.01		
Artikel: BOS-Ecoline ELD(W) 1050 Katalogzeichnung		
Ä.Nr:	Datum:	 A Phoenix Mecano Company DISK : 2 802 507 Datum: 23.07.2004 HR