

Lötstifte für gedruckte Schaltungen

Picots pour circuits imprimés

Soldering lugs for printed circuitry

Werkstoff:

BZ = Bronze
CU = Kupfer
MS = Messing

Matière:

BZ = bronze
CU = cuivre
MS = laiton

Material:

BZ = bronze
CU = copper
MS = brass

Oberflächenbehandlung: Code
bl = blank (0)
ag = versilbert (1)
au = vergoldet (2)
sn = verzinkt (8)

Traitements de surface: Code
bl = brut (0)
ag = argenté (1)
au = doré (2)
sn = étamé (8)

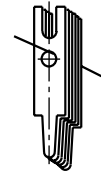
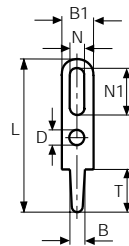
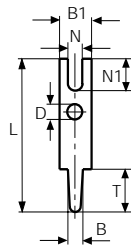
Surface-plating: Code
bl = clean (0)
ag = silver-plated (1)
au = gold-plated (2)
sn = tin-plated (8)

Bestellbeispiel:
Exemple de commande:
Example of order:

1007D.68 lose / en vrac / in bulk
(1007D MS sn)

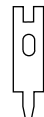
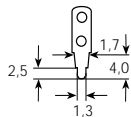
magaziniert / emmagasiné / wired

01007D.68
(01007D MS sn)

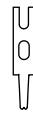
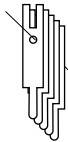
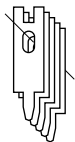


lose
en vrac
in bulk

magaziniert
emmagasiné
wired



Artikel-Nr. Numéro d'article Part-No.	1021.6() MS	01021.6() MS	1007C06.6() MS	01007C06.6() MS	1007D.6() MS	01007D.6() MS	1007A.2() BZ
Print Bohrung Trou Hole	Ø 1.3 T 2.5/4 L 10 B1 2.8 N - N1 - D 1.7 B 1.3 S 0.5	Ø 1.3 T 2.5/4 L 10 B1 2.8 N - N1 - D 1.7 B 1.3 S 0.5	Ø 1.3 T 4 L 10.5 B1 2.8 N 1.2 N1 2.5 D - B 1.3 S 0.6	Ø 1.3 T 4 L 10.5 B1 2.8 N 1.2 N1 2.5 D - B 1.3 S 0.6	Ø 1.3 T 4 L 10.5 B1 2.8 N 1.4 N1 2.5 D - B 1.3 S 0.5	Ø 1.3 T 4 L 10.5 B1 2.8 N 1.4 N1 2.5 D - B 1.3 S 0.5	Ø 1.3 T 4 L 15 B1 4 N 1.2 N1 2 D 1.5/3 B 1.35 S 0.5
Stand.-Packg.	2000	4800	2000	5400	2000	4800	2000
Werkzeuge Outils / Tools	1035/53	1040F	1035/13	1044C06	1035/13	1044C	1035/12



Artikel-Nr. Numéro d'article Part-No.	01007A.2() BZ	1004P.6() MS	01004P.6() MS	1017H.2() BZ	01017H.2() BZ	1018.2() BZ 1018.6() MS	01018.2() BZ 01018.6() MS
Print Bohrung Trou Hole	Ø 1.3 T 4 L 15 B1 4 N 1.2 N1 2 D 1.5/3 B 1.35 S 0.5	Ø 1.3 T 4.1 L 15.1 B1 2.7 N 1 N1 3 D 1 B 1.2 S 0.8	Ø 1.3 T 4.1 L 15.1 B1 2.7 N 1 N1 3 D 1 B 1.2 S 0.8	Ø 1.3 T 4.5 L 13.5 B1 2.8 N 1.3 N1 3 D 1.3/2.5 B 1.35 S 0.8	Ø 1.3 T 4.5 L 13.5 B1 2.8 N 1.3 N1 3 D 1.3/2.5 B 1.35 S 0.8	Ø 1.3 T 6.8 L 11.3 B1 2.8 N 1.2 N1 2.2 D - B 1.4 S 0.5	Ø 1.3 T 6.8 L 11.3 B1 2.8 N 1.2 N1 2.2 D - B 1.4 S 0.5
Stand.-Packg.	4800	2000	2000	2000	2000	2000	4800
Werkzeuge Outils / Tools	1044	1035/18	1044P	1035/18	1043H	1035/14	1040