

# Lötösen

# Cosses à souder

# Soldering tags

Werkstoff:

BZ = Bronze  
 MS = Messing  
 NS = Neusilber  
 ST = Stahl

Matière:

BZ = bronze  
 MS = laiton  
 NS = maillechort  
 ST = acier

Material:

BZ = bronze  
 MS = brass  
 NS = german silver  
 ST = steel

Oberflächenbehandlung:

bl = blank  
 ag = versilbert  
 au = vergoldet  
 ni = vernickelt  
 sn = verzinkt

Code

(0)  
 (1)  
 (2)  
 (5)  
 (8)

Traitements de surface:

bl = brut  
 ag = argenté  
 au = doré  
 ni = nickelé  
 sn = étamé

Code

(0)  
 (1)  
 (2)  
 (5)  
 (8)

Surface-plating:

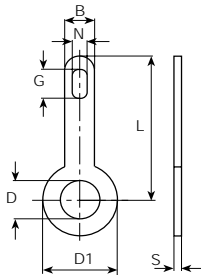
bl = clean  
 ag = silver-plated  
 au = gold-plated  
 ni = nickel-plated  
 sn = tin-plated

Code

(0)  
 (1)  
 (2)  
 (5)  
 (8)

Bestellbeispiel:

Exemple de commande: **2021.68**  
 Example of order: (2021 MS sn)



D mm	L mm	D1 mm	B mm	N mm	G mm	S mm	Werkstoff Matière Material	Stand.- Packg.	DIN 41496	Artikel-Nr. Numéro d'article Part-No.
1.6	5	3	2	0.7	1.3	0.3	MS	5000		2021.6( )
	8	3	2	0.8	2.5	0.3	MS	5000		2022.6( )
2.2	6	5.5	3	1	1.8	0.3	MS	5000		2025.6( )
	9	4.5	3	1.7	3.2	0.4	MS	5000	A1-2x9	2002.6( )
	9	5.5	3	1.7	3.2	0.3	MS	5000		2027.6( )
	12	4.5	3	1.7	3.2	0.4	MS	5000	A1-2x12	2005.6( )
	12	5.5	3	1.7	3.2	0.3	MS	5000		2029.6( )
2.6	9	4.5	3	1.7	3.2	0.3	MS	5000		2035.6( )
	12	4.5	3	1.7	3.2	0.4	MS	5000		2036.6( )
2.7	20	5.5	2.5	1.2	2.2	0.4	MS	2000		2037.6( )
2.8	9	5.5	3	1.7	3.2	0.3	MS	5000		2038.6( )
3.2	9	5.5	3	1.7	3.2	0.3	MS	5000		2003.6( )
	12	5.5	3	1.7	3.2	0.3	MS	5000		200603.6( )
	12	5.5	3	1.7	3.2	0.5	MS	5000	A1-3x12	2006.6( )
	12	6.5	3	1.7	3.2	0.3	MS	5000		2055.6( )
	18	5.5	3	1.7	3.2	0.5	MS	2000	A1-3x18	2008.6( )
	18	6.5	3	1.7	3.2	0.3	MS	5000		201303.6( )
	18	6.5	3	1.7	3.2	0.5	MS	1000		2013.6( )
	24	7	3	1.7	3.2	0.5	MS	1000		2058.6( )
	46.5	7	3	1.7	3.2	0.5	MS	500		2059.6( )
3.5	27	25	2.8	1.7	3.2	0.5	MS	1000		2031.6( )
3.7	9	6	3	1.7	3.2	0.3	MS	5000		2060.6( )
	12	6.5	3	1.7	3.2	0.3	MS	5000		2061.6( )
	18	6.5	3	1.7	3.2	0.3	MS	2000		2062.6( )
4.2	21	6.3	3	1.5	2.7	0.3	ST	2000		2077.9( )
4.3	9	6	3	1.7	3.2	0.3	MS	5000		2004.6( )
	12	6	3	1.7	3.2	0.5	MS	5000	A1-4x12	2007.6( )
	12	6	3	1.7	3.2	0.5	NS	2000		2007.7( )
	18	6	3	1.7	3.2	0.5	MS	2000	A1-4x18	2009.6( )
	24	7	3	1.7	3.2	0.3	MS	2000		201503.6( )
	24	7	3	1.7	3.2	0.5	MS	1000		2015.6( )
	46.5	7	3	1.7	3.2	0.5	MS	500		2016.6( )
5.3	12	10	4	1.7	3.2	0.3	MS	2000		2064.6( )
	20	10	4	2	4.2	0.5	MS	1000		2065.6( )
6.4	12	10	4	1.7	3.2	0.3	MS	2000		2067.6( )
	20	10	4	2	4.2	0.5	MS	1000		2068.6( )
7.3	12	10	4	1.7	3.2	0.3	MS	2000		2069.6( )
8	12	10	4	1.7	3.2	0.3	MS	2000		2088.6( )
9.1	16	13	4	1.5	4	0.5	MS	1000		2052.6( )
11.2	16	15	4	1.5	4	0.5	MS	1000		2054.6( )