

Lötösen

Cosses à souder

Soldering tags

Werkstoff:

BZ = Bronze
 MS = Messing
 NS = Neusilber
 ST = Stahl

Matière:

BZ = bronze
 MS = laiton
 NS = maillechort
 ST = acier

Material:

BZ = bronze
 MS = brass
 NS = german silver
 ST = steel

Oberflächenbehandlung:

bl = blank
 ag = versilbert
 au = vergoldet
 ni = vernickelt
 sn = verzinkt

Code

(0)
 (1)
 (2)
 (5)
 (8)

Traitements de surface:

bl = brut
 ag = argenté
 au = doré
 ni = nickelé
 sn = étamé

Code

(0)
 (1)
 (2)
 (5)
 (8)

Surface-plating:

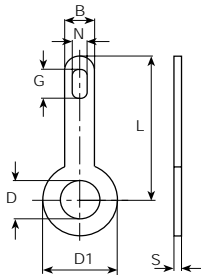
bl = clean
 ag = silver-plated
 au = gold-plated
 ni = nickel-plated
 sn = tin-plated

Code

(0)
 (1)
 (2)
 (5)
 (8)

Bestellbeispiel:

Exemple de commande: **2021.68**
 Example of order: (2021 MS sn)



D mm	L mm	D1 mm	B mm	N mm	G mm	S mm	Werkstoff Matière Material	Stand.- Packg.	DIN 41496	Artikel-Nr. Numéro d'article Part-No.	
1.6	5	3	2	0.7	1.3	0.3	MS	5000		2021.6()	
	8	3	2	0.8	2.5	0.3	MS	5000		2022.6()	
2.2	6	5.5	3	1	1.8	0.3	MS	5000	A1-2x9	2025.6()	
	9	4.5	3	1.7	3.2	0.4	MS	5000		2002.6()	
	9	5.5	3	1.7	3.2	0.3	MS	5000		2027.6()	
	12	4.5	3	1.7	3.2	0.4	MS	5000		2005.6()	
2.6	12	5.5	3	1.7	3.2	0.3	MS	5000	A1-2x12	2029.6()	
	9	4.5	3	1.7	3.2	0.3	MS	5000		2035.6()	
	12	4.5	3	1.7	3.2	0.4	MS	5000		2036.6()	
	12	5.5	3	1.7	3.2	0.3	MS	2000		2037.6()	
2.7	20	5.5	2.5	1.2	2.2	0.4	MS	2000	2038.6()		
2.8	9	5.5	3	1.7	3.2	0.3	MS	5000	2038.6()		
3.2	9	5.5	3	1.7	3.2	0.3	MS	5000	A1-3x12	2003.6()	
	12	5.5	3	1.7	3.2	0.3	MS	5000		200603.6()	
	12	5.5	3	1.7	3.2	0.5	MS	5000		2006.6()	
	12	6.5	3	1.7	3.2	0.3	MS	5000		2055.6()	
	18	5.5	3	1.7	3.2	0.5	MS	2000		2008.6()	
	18	6.5	3	1.7	3.2	0.3	MS	5000		201303.6()	
	18	6.5	3	1.7	3.2	0.5	MS	1000		2013.6()	
	24	7	3	1.7	3.2	0.5	MS	1000		2058.6()	
3.5	46.5	7	3	1.7	3.2	0.5	MS	500	A1-3x18	2059.6()	
	27	25	2.8	1.7	3.2	0.5	MS	1000		2031.6()	
	3.7	9	6	3	1.7	3.2	0.3	MS		5000	2060.6()
		12	6.5	3	1.7	3.2	0.3	MS		5000	2061.6()
4.2	18	6.5	3	1.7	3.2	0.3	MS	2000	A1-4x12	2062.6()	
	21	6.3	3	1.5	2.7	0.3	ST	2000		2077.9()	
4.3	9	6	3	1.7	3.2	0.3	MS	5000	A1-4x18	2004.6()	
	12	6	3	1.7	3.2	0.5	MS	5000		2007.6()	
	12	6	3	1.7	3.2	0.5	NS	2000		2007.7()	
	18	6	3	1.7	3.2	0.5	MS	2000		2009.6()	
	24	7	3	1.7	3.2	0.3	MS	2000		201503.6()	
	24	7	3	1.7	3.2	0.5	MS	1000		2015.6()	
	46.5	7	3	1.7	3.2	0.5	MS	500		2016.6()	
	5.3	12	10	4	1.7	3.2	0.3	MS		2000	2064.6()
20		10	4	2	4.2	0.5	MS	1000	2065.6()		
12		10	4	1.7	3.2	0.3	MS	2000	2067.6()		
6.4	20	10	4	2	4.2	0.5	MS	1000	A1-4x18	2068.6()	
	12	10	4	1.7	3.2	0.3	MS	2000		2069.6()	
7.3	12	10	4	1.7	3.2	0.3	MS	2000	2088.6()		
8	12	10	4	1.7	3.2	0.3	MS	2000	2088.6()		
9.1	16	13	4	1.5	4	0.5	MS	1000	2052.6()		
11.2	16	15	4	1.5	4	0.5	MS	1000	2054.6()		