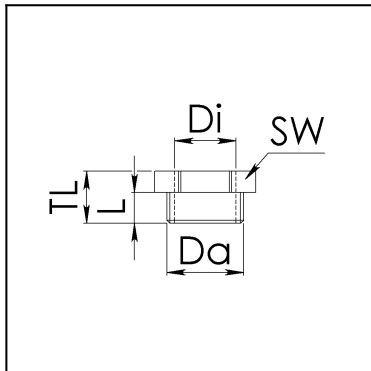
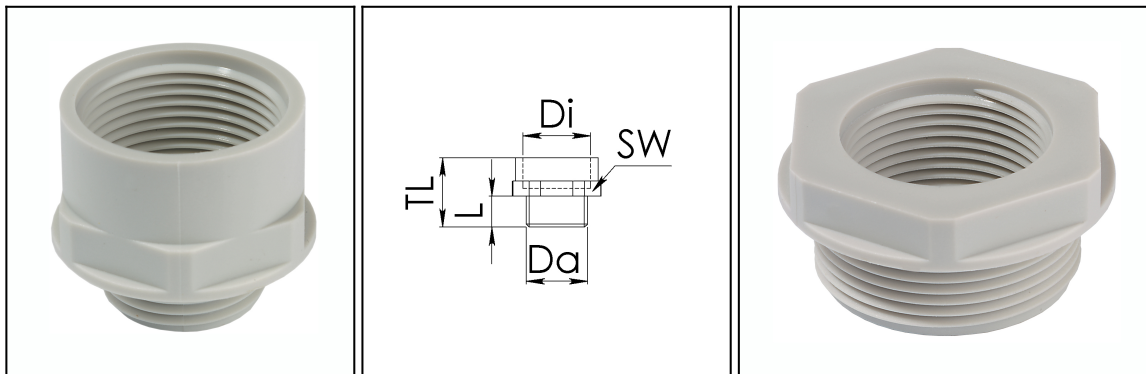







Adapter, PG-metrisch



Einsatztemperatur: -40°C bis 100°C kurzzeitig bis ca. 150°C
Material: Polyamid, glasfaserverstärkt
Ausstattung: Anpassen von PG-Gewinde- oder Durchgangsbohrungen auf metrische Gewindegrößen

Type	WISKA-No. RAL 7035		 mm	 mm	 mm	 mm	Form	
APM 7/12	10063650	25	PG 7	M 12x1,5	9	16	27	A
APM 7/16	10063651	25	PG 7	M 16x1,5	9	20	27	A
APM 9/12	10063652	25	PG 9	M 12x1,5	9	20	27	A
APM 9/16	10063653	25	PG 9	M 16x1,5	9	20	27	A
APM 9/20	10063654	25	PG 9	M 20x1,5	9	24	27	A
APM 11/16	10063655	25	PG 11	M 16x1,5	9	22	27	A
APM 11/20	10063656	25	PG 11	M 20x1,5	9	24	27	A
APM 11/25	10063657	25	PG 11	M 25x1,5	9	29	27	A
APM 13,5/16	10063658	25	PG 13,5	M 16x1,5	10	24	28	A
APM 13,5/20	10063659	25	PG 13,5	M 20x1,5	10	24	28	A
APM 13,5/25	10063660	25	PG 13,5	M 25x1,5	10	29	28	A
APM 16/20	10063661	25	PG 16	M 20x1,5	10	27	28	A
APM 16/25	10063662	25	PG 16	M 25x1,5	10	29	28	A
APM 16/32	10063663	25	PG 16	M 32x1,5	10	36	28	A
APM 21/25	10063664	10	PG 21	M 25x1,5	12	33	30	A
APM 21/32	10063665	10	PG 21	M 32x1,5	12	36	30	A
APM 21/40	10063666	10	PG 21	M 40x1,5	12	46	30	A
APM 29/32	10063667	10	PG 29	M 32x1,5	12	42	19	B
APM 29/40	10063668	10	PG 29	M 40x1,5	12	46	30	A
APM 29/50	10063669	10	PG 29	M 50x1,5	12	55	30	A
APM 36/40	10063670	10	PG 36	M 40x1,5	14	53	21	B
APM 36/50	10063671	10	PG 36	M 50x1,5	14	55	32	A
APM 36/63	10063672	10	PG 36	M 63x1,5	14	68	32	A
APM 42/40	10063673	5	PG 42	M 40x1,5	14	60	21	B
APM 42/50	10063674	5	PG 42	M 50x1,5	14	60	32	A

APM 42/63	10063675	5	PG 42	M 63x1,5	14	68	32	A
APM 48/50	10063676	5	PG 48	M 50x1,5	15	65	22	B
APM 48/63	10063677	5	PG 48	M 63x1,5	15	68	33	A

© 2012 WISKA Hoppmann & Mulsow GmbH

Kisdorfer Weg 28

D-24568 Kaltenkirchen

Telefon: +49 (0)4191 / 508-100

Fax: +49 (0)4191 / 508-209