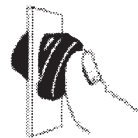
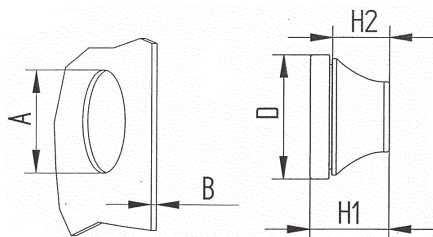
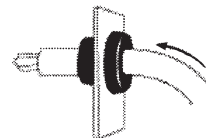


M-Flex-Kabeldurchführung

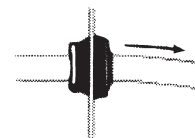
Material: siehe Tabelle, Materialeigenschaften Seite 265 (VDT)
Farbe: siehe Tabelle
Schutzart: IP 66/IP 67 gem. EN-60529



Stecken...



...schieben...



...ziehen – dicht!

Artikel-Nr.	Material	Farbe	Kabel- ϕ	Maße			H1	H2	MOQ Stück
				A	B	D			
MF-M12-EG	EPDM	grau	3,0- 5,0	12,5	1,0-4,0	18,5	17,0	10,5	100
MF-M12-EB	EPDM	schwarz	3,0- 5,0	12,5	1,0-4,0	18,5	17,0	10,5	100
MF-M12-CB	CR	schwarz	3,0- 5,0	12,5	1,0-4,0	18,5	17,0	10,5	100
MF-M12-SB	Q	schwarz	3,0- 5,0	12,5	1,0-4,0	18,5	17,0	10,5	100
MF-M16-EG	EPDM	grau	5,0- 7,0	16,5	1,0-4,0	21,5	19,0	12,0	100
MF-M16-EB	EPDM	schwarz	5,0- 7,0	16,5	1,0-4,0	21,5	19,0	12,0	100
MF-M16-CB	CR	schwarz	5,0- 7,0	16,5	1,0-4,0	21,5	19,0	12,0	100
MF-M16-SB	Q	schwarz	5,0- 7,0	16,5	1,0-4,0	21,5	19,0	12,0	100
MF-M20-EG	EPDM	grau	7,0-10,0	20,5	1,0-4,0	25,5	20,5	14,0	50
MF-M20-EB	EPDM	schwarz	7,0-10,0	20,5	1,0-4,0	25,5	20,5	14,0	50
MF-M20-CB	CR	schwarz	7,0-10,0	20,5	1,0-4,0	25,5	20,5	14,0	50
MF-M20-SB	Q	schwarz	7,0-10,0	20,5	1,0-4,0	25,5	20,5	14,0	50
MF-M25-EG	EPDM	grau	10,0-14,0	25,5	1,0-4,0	30,5	23,0	15,5	50
MF-M25-EB	EPDM	schwarz	10,0-14,0	25,5	1,0-4,0	30,5	23,0	15,5	50
MF-M25-CB	CR	schwarz	10,0-14,0	25,5	1,0-4,0	30,5	23,0	15,5	50
MF-M25-SB	Q	schwarz	10,0-14,0	25,5	1,0-4,0	30,5	23,0	15,5	50
MF-M32-EG	EPDM	grau	14,0-20,0	32,5	1,0-4,0	38,5	25,0	18,0	50
MF-M32-EB	EPDM	schwarz	14,0-20,0	32,5	1,0-4,0	38,5	25,0	18,0	50
MF-M32-CB	CR	schwarz	14,0-20,0	32,5	1,0-4,0	38,5	25,0	18,0	50
MF-M32-SB	Q	schwarz	14,0-20,0	32,5	1,0-4,0	38,5	25,0	18,0	50
MF-M40-EG	EPDM	grau	20,0-26,0	40,5	1,0-4,0	49,0	32,0	22,0	10
MF-M40-EB	EPDM	schwarz	20,0-26,0	40,5	1,0-4,0	49,0	32,0	22,0	10
MF-M40-CB	CR	schwarz	20,0-26,0	40,5	1,0-4,0	49,0	32,0	22,0	10
MF-M40-SB	Q	schwarz	20,0-26,0	40,5	1,0-4,0	49,0	32,0	22,0	10
MF-M50-EG	EPDM	grau	26,0-35,0	50,5	1,0-4,0	60,5	37,5	25,5	10
MF-M50-EB	EPDM	schwarz	26,0-35,0	50,5	1,0-4,0	60,5	37,5	25,5	10
MF-M50-CB	CR	schwarz	26,0-35,0	50,5	1,0-4,0	60,5	37,5	25,5	10
MF-M50-SB	Q	schwarz	26,0-35,0	50,5	1,0-4,0	60,5	37,5	25,5	10