

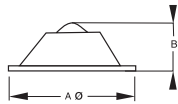
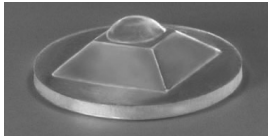
**Bumper Elastikpuffer / Gehäusefüße**

Material: Polyurethan (BSI)  
Farbe: s. Tabelle

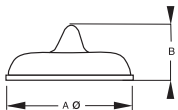
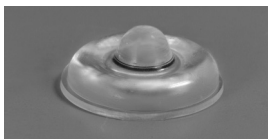


**geräuschkämpfend**

Artikel-Nr.	Farbe	Maße A	B	VPE Stück	Karton Stück	MOQ Stück
-------------	-------	-----------	---	--------------	-----------------	--------------



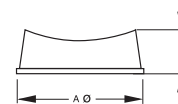
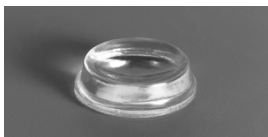
BS-33-SD-CL-R	klar	12,7	3,8	200	5.000	200
---------------	------	------	-----	-----	-------	-----



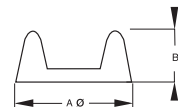
BS-58-SD-CL-R	klar	12,7	5,1	200	5.000	200
---------------	------	------	-----	-----	-------	-----

**zylindrisch vertieft**

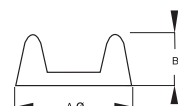
Artikel-Nr.	Farbe	Maße A	B	VPE Stück	Karton Stück	MOQ Stück
-------------	-------	-----------	---	--------------	-----------------	--------------



BS-18-CL-R	klar	12,7	3,5	200	5.000	200
BS-18-BK-R	schwarz	12,7	3,5	200	5.000	200
BS-18-GR-R	grau	12,7	3,5	200	5.000	5.000
BS-18-WH-R	weiß	12,7	3,5	200	5.000	5.000



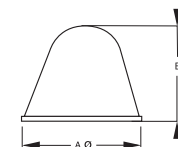
BS-17-CL-R	klar	22,3	10,2	72	1.440	72
BS-17-BK-R	schwarz	22,3	10,2	72	1.440	72
BS-17-GR-R	grau	22,3	10,2	72	1.440	1.440
BS-17-WH-R	weiß	22,3	10,2	72	1.440	1.440
BS-17-BR-R	braun	22,3	10,2	72	1.440	1.440



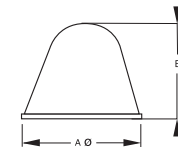
BS-30-CL-A	klar	46,0	15,2	1	500	500
BS-30-BK-A	schwarz	46,0	15,2	1	500	500
BS-30-GR-A	grau	46,0	15,2	1	500	500
BS-30-WH-A	weiß	46,0	15,2	1	500	500
BS-30-BR-A	braun	46,0	15,2	1	500	500

**konisch**

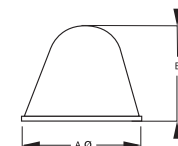
Artikel-Nr.	Farbe	Maße A	B	VPE Stück	Karton Stück	MOQ Stück
-------------	-------	-----------	---	--------------	-----------------	--------------



BS-37-CL-A	klar	18,3	14,2	1	1.500	100
BS-37-BK-A	schwarz	18,3	14,2	1	1.500	1.500



BS-47-CL-A	klar	19,1	19,1	1	1.000	50
BS-47-BK-A	schwarz	19,1	19,1	1	1.000	1.000



BS-57-CL-A	klar	20,0	22,5	1	1.000	50
BS-57-BK-A	schwarz	20,0	22,5	1	1.000	1.000