

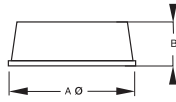
Bumper Elastikpuffer / Gehäusefüße

Material: Polyurethan (BSI)
Farbe: s. Tabelle

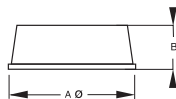
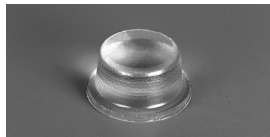


zylindrisch

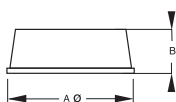
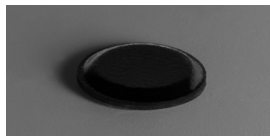
Artikel-Nr.	Farbe	Maße A	B	VPE Stück	Karton Stück	MOQ Stück
-------------	-------	-----------	---	--------------	-----------------	--------------



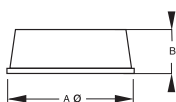
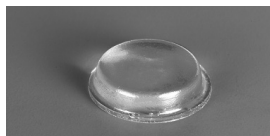
BS-34-CL-R	klar	9,5	3,2	300	6.000	300
BS-34-BK-R	schwarz	9,5	3,2	300	6.000	300
BS-34-GR-R	grau	9,5	3,2	300	6.000	6.000
BS-34-WH-R	weiß	9,5	3,2	300	6.000	6.000



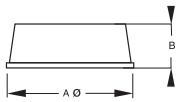
BS-35-CL-R	klar	9,5	4,8	200	5.000	200
BS-35-BK-R	schwarz	9,5	4,8	200	5.000	200



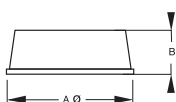
BS-05-CL-R	klar	12,7	1,5	200	5.000	200
BS-05-BK-R	schwarz	12,7	1,5	200	5.000	200
BS-05-GR-R	grau	12,7	1,5	200	5.000	5.000
BS-05-WH-R	weiß	12,7	1,5	200	5.000	5.000
BS-05-BR-R	braun	12,7	1,5	200	5.000	5.000



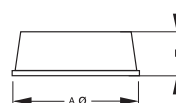
BS-01-CL-R	klar	12,7	3,5	200	5.000	200
BS-01-BK-R	schwarz	12,7	3,5	200	5.000	200
BS-01-GR-R	grau	12,7	3,5	200	5.000	5.000
BS-01-WH-R	weiß	12,7	3,5	200	5.000	5.000
BS-01-BR-R	braun	12,7	3,5	200	5.000	5.000



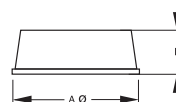
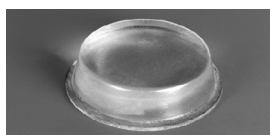
BS-06-CL-R	klar	12,7	6,4	200	5.000	200
BS-06-BK-R	schwarz	12,7	6,4	200	5.000	200
BS-06-WH-R	weiß	12,7	6,4	200	5.000	5.000



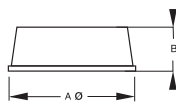
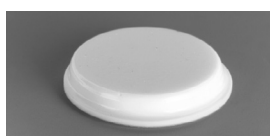
BS-11-CL-R	klar	16,5	10,2	128	2.560	128
BS-11-BK-R	schwarz	16,5	10,2	128	2.560	128
BS-11-GR-R	grau	16,5	10,2	128	2.560	2.560



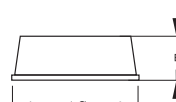
BS-44-CL-R	klar	19,1	4,1	98	2.450	98
BS-44-BK-R	schwarz	19,1	4,1	98	2.450	98
BS-44-WH-R	weiß	19,1	4,1	98	2.450	2.450



BS-41-CL-R	klar	19,8	5,1	84	3.360	84
BS-41-BK-R	schwarz	19,8	5,1	84	3.360	84
BS-41-GR-R	grau	19,8	5,1	84	3.360	84



BS-24-CL-R	klar	20,6	3,0	72	2.520	72
BS-24-BK-R	schwarz	20,6	3,0	72	2.520	72
BS-24-GR-R	grau	20,6	3,0	72	2.520	2.520
BS-24-WH-R	weiß	20,6	3,0	72	2.520	2.520
BS-24-BR-R	braun	20,6	3,0	72	2.520	2.520



BS-72-CL-R	klar	31,24	2,54	32	2.400	32
BS-72-BK-R	schwarz	31,24	2,54	32	2.400	32