

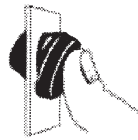
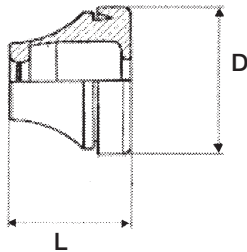
## SNAP®-Kabeldurchführung

Material: CR (VTD-93)  
Farbe: schwarz, auf Anfrage auch in EPDM (grau) und Silikon (rotbraun oder schwarz) lieferbar

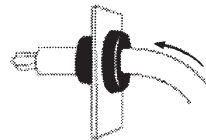
Temperatur: -30 °C bis +110 °C

Schutzart: IP 66 / IP 67

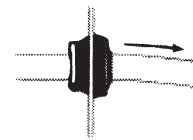
geprüft nach DIN VDE 0470 Teil 1 / 11.92



Stecken...



...schieben...

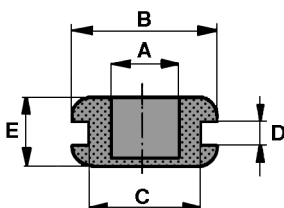
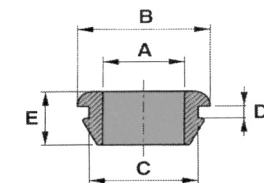
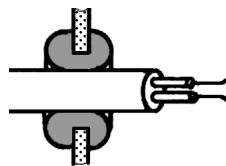


...ziehen - dicht!

Artikel-Nr.	Loch- $\phi$	Plattenmaß	PG	M	Kabel- $\phi$	L	D	MOQ Stück
1100-CR-SW	12,5	0,8 - 2,0	7	12	3,5 - 5,0	17,0	20,0	10
1101-CR-SW	16,0	1,0 - 4,0	9	16	5,0 - 7,0	18,5	21,0	10
1102-CR-SW	19,0	1,0 - 4,0	11	-	7,0 - 10,0	19,5	24,0	10
1202-CR-SW	20,5	1,0 - 4,0	-	20	7,0 - 10,0	20,5	25,5	100
1103-CR-SW	23,0	1,0 - 4,0	16	-	10,0 - 14,0	22,5	28,0	10
1203-CR-SW	25,5	1,0 - 4,0	-	25	10,0 - 14,0	22,5	31,0	100
1104-CR-SW	29,0	1,0 - 4,0	21	-	14,0 - 20,0	24,5	35,0	10
1204-CR-SW	32,5	1,0 - 4,0	-	32	14,0 - 20,0	25,5	39,0	100
1105-CR-SW	38,0	1,0 - 4,0	29	-	20,0 - 26,0	30,0	46,0	100
1205-CR-SW	40,5	1,0 - 4,0	-	40	20,0 - 26,0	32,0	49,0	100
1106-CR-SW	48,0	1,0 - 4,0	36	-	26,0 - 35,0	35,0	58,0	100

## Kabeldurchführungen

Material: Weich-PVC (SK-07)



Artikel-Nr.	Farbe	Maße					MOQ Stück
		A	B	C	D	E	
042 0801 113 07	weiß	8,0	15,0	11,5	1,5	9,0	500
042 0801 114 07	schwarz	8,0	15,0	11,5	1,5	9,0	500
042 1200 699 07	schwarz	12,0	19,5	16,0	2,0	8,5	100

Artikel-Nr.	Farbe	Maße					MOQ Stück
		A	B	C	D	E	
128 0060 699 07	schwarz	6,4	12,5	9,5	1,5	6,4	250
128 0080 699 07	schwarz	7,6	17,0	11,0	1,5	8,0	250
128 0090 699 07	schwarz	9,5	15,5	12,5	1,5	6,4	250
128 0110 699 07	schwarz	11,0	19,0	16,0	1,5	8,0	250
128 0120 699 07	schwarz	16,0	25,5	19,0	1,7	7,0	100
128 0170 699 07	schwarz	18,5	25,5	22,0	1,5	8,0	100
128 0200 699 07	schwarz	20,0	29,5	25,5	1,5	7,5	100