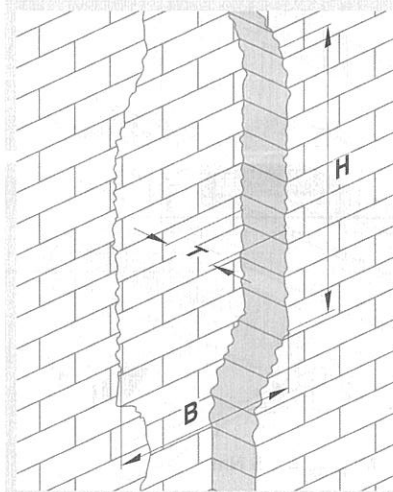
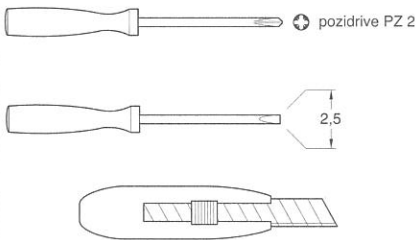
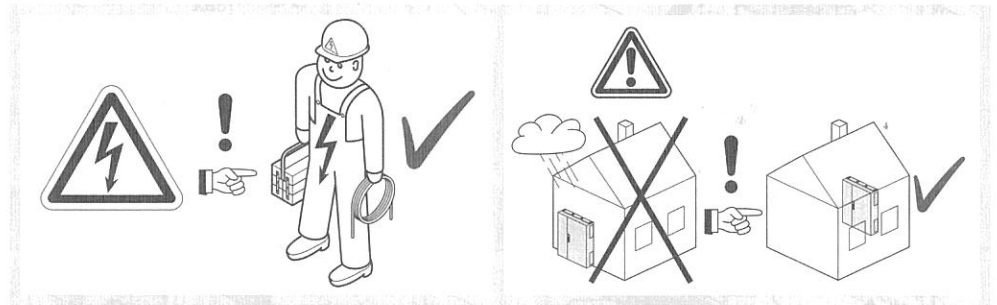


# Volta

- Ⓧ DE Montageanleitung
- Ⓧ FR Notice d'instructions
- Ⓧ GB Mounting instructions
- Ⓧ NL Montage instructie
- Ⓧ DK Monteringsvejledning
- Ⓧ FI Asennusohje
- Ⓧ NO Montasjeanvisning
- Ⓧ SE Monterings instruktioner
- Ⓧ IT Istruzioni di montaggio
- Ⓧ ES Instrucciones de montaje
- Ⓧ PT Instruções de montagem
- Ⓧ CZ Montážní návod
- Ⓧ BA Uputstvo za montažu

- Ⓧ HR Upute za montažu
- Ⓧ HU Szerelési útmutató
- Ⓧ LT Montavimo instrukcija
- Ⓧ LV Montāžas instrukcija
- Ⓧ PL Instrukcja montażowa
- Ⓧ RO Instrucțiuni de montare
- Ⓧ SK Návod na montáž
- Ⓧ RU Инструкция по монтажу
- Ⓧ BG Инструкции за монтаж
- Ⓧ GR Οδηγίες χώνευσης
- Ⓧ SI Navodilo za montažo
- Ⓧ EE Paigaldusjuhised
- Ⓧ IS Leiðbeiningar



	B	H	T
VU12...	335 mm	340 mm	90 mm
VU24...	335 mm	490 mm	90 mm
VU36...	335 mm	615 mm	90 mm
VU48...	335 mm	740 mm	90 mm

