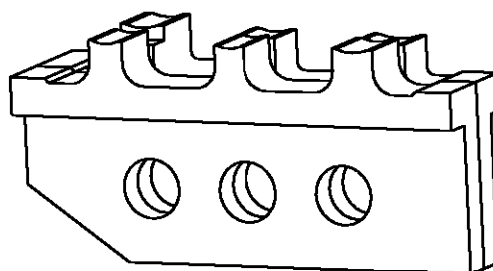
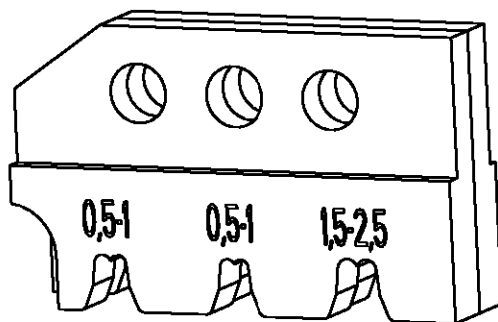


LOC	DIST	REVISIONS					
A1	-	P	LTR	DESCRIPTION	DATE	DWN	APVD

Kontakt Contact	DGB (mm <sup>2</sup> ) Wire Range	Drahtcrimp/Wirecrimp Hoehe/Height		Isocrimp Breite/Width	Iso.-Ø Ins. Range	Betriebsanl. Instr. Sheet
160891	0.5-1.0	1.30	2.30	2.80	1.4-2.1	411-18201
927779 / 927846 / 927848 / 927885 / 927887 / 1241823 / 1241824	0.5-1.0	1.23	2.03	2.80	1.4-2.1	
927777 / 927850 / 927857 / 927889 / 927891	1.5-2.5	1.56	2.80	3.60	2.2-3.0	



539742-2	1	8-539634-5	screw M4x11	Schraube M4x11	A
	1	0-519151-9	screw M4x10	Schraube M4x10	A
	QTY Stck	PN	Description	Benennung	REV


19

RELEASED FOR PUBLICATION

THIS DRAWING IS UNPUBLISHED.

BY TYCO ELECTRONICS CORPORATION. ALL RIGHTS RESERVED.

© COPYRIGHT 19

DIMENSIONS: mm-DIN 7168-m	DWN	02FEB2000	MATERIAL	-	FINISH	-
	CHK	02FEB2000	 tyco Electronics AMP GmbH D - 64625 Bensheim			
TOLERANCES UNLESS OTHERWISE SPECIFIED:	U.Reuter					
0 PLC ±	-		ERGOCRIMP Die Set for Junior Power Timer, Junior Timer and Standard Power Timer			
1 PLC ±	-		SIZE	CAGE CODE	DRAWING NO	RESTRICTED TO
2 PLC ±	-		A4	00779	©=539742-2	-
3 PLC ±	-		CUSTOMER DRAWING			
4 PLC ±	-		SCALE	2:1	SHEET 1 OF 1	REV A
ANGLES ±	-					