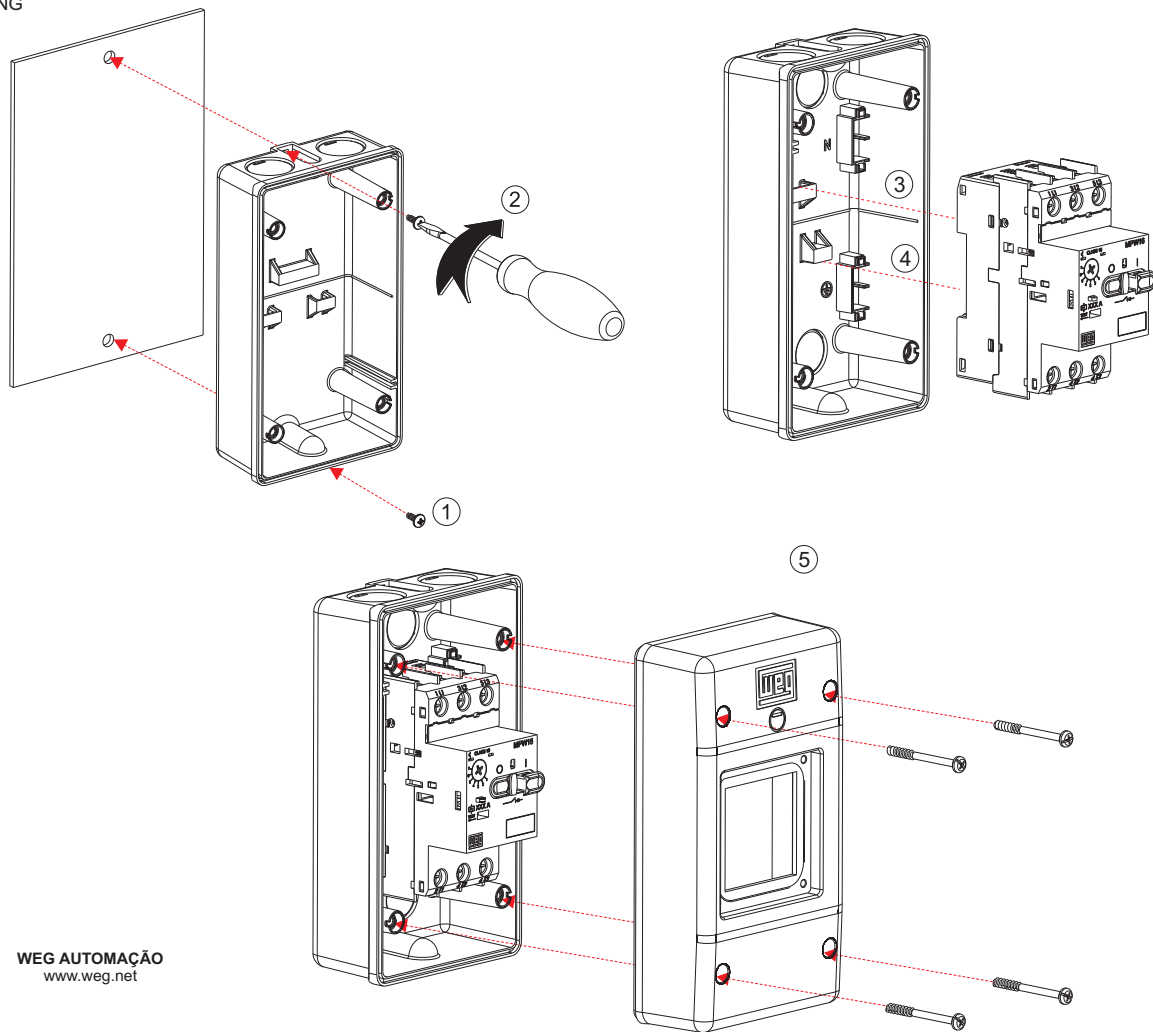


MONTAGEM
MOUNTING
MONTAJE
BEFESTIGUNG

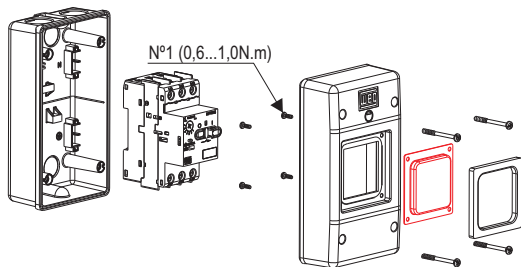




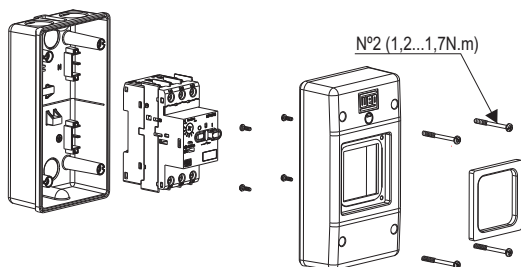
CAIXA DE SOBREPOR - PE41/PE66/MPE66
INSULATED ENCLOSURE - PE41/PE66/MPE66
CAJA PLÁSTICA PARA SOBREPONER - PE41/PE66/MPE66
ISOLIERSTOFFGEHÄUSE - PE41/PE66/MPE66

INSTRUÇÕES DE MONTAGEM ASSEMBLY INSTRUCTIONS INSTRUCCIONES DE MONTAJE MONTAGEANLEITUNG

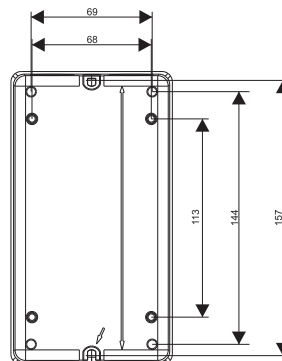
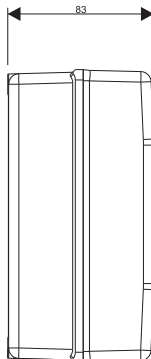
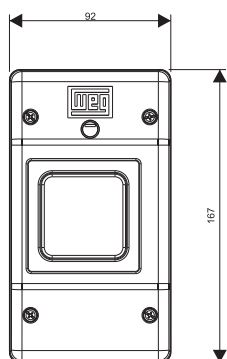
PE66 (IP66)



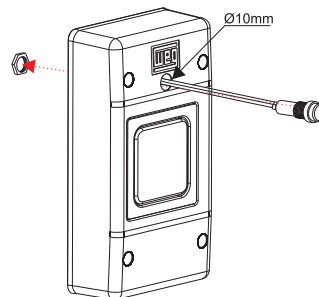
PE41 (IP41)



DIMENSÕES
DIMENSIONI
DIMENSIONES
MAßE



INSTALAÇÃO DA LÂMPADA DE SINALIZAÇÃO NA CAIXA DE SOBREPOR
INDICATOR LIGHT INSTALLATION IN THE INSULATED ENCLOSURE
INSTALACIÓN DE LA LÂMPADA INDICADORA EN LA CAJA PARA SOBREPONER
EINBAU DER LEUCHTMELDER



O GRAU DE PROTEÇÃO IP66 SÓ É VÁLIDO SEM A IMPLEMENTAÇÃO DA LÂMPADA.
THE PROTECTION DEGREE IP66 IS ONLY VALID WITHOUT THE IMPLEMENTATION OF THE SIGNALING LAMP.
EL GRADO DE PROTECCIÓN IP66 SOLAMENTE ES POSIBLE SIN LA INSTALACIÓN DE LA LÂMPARA.
MIT INSTALLATION DER LAMPE, WIRD DER SCHUTZGRAD IP66 NICHT GEWÄHRLEISTET.