



Steckzungen für Schweißanschluss

Masse im Steckbereich
 DIN 46342 Teil 1

Werkstoff:

BZ = Bronze
 MS = Messing
 NS = Neusilber
 RF = rostfreier Stahl
 ST = Stahl

Oberflächenbehandlung: Code
 bl = blank (0)
 ag = versilbert (1)
 au = vergoldet (2)
 ni = vernickelt (5)
 sn = reinverzinkt (7)

Bestellbeispiel
Exemple de commande:
Example of order:

38401SB.95
 (3840/1SB ST ni)

Languettes pour soudage par points

Dimensions zone d'emboîtement selon
 DIN 46342 partie 1

Matière:

BZ = bronze
 MS = laiton
 NS = maillechort
 RF = acier inox
 ST = acier

Traitements de surface: Code
 bl = brut (0)
 ag = argenté (1)
 au = doré (2)
 ni = nickelé (5)
 sn = étamage pur (7)

Tabs for spot welding

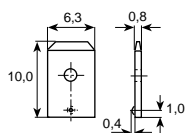
Dimensions in the tab sector
 DIN 46342 part 1

Material:

BZ = bronze
 MS = brass
 NS = german silver
 RF = stainless steel
 ST = steel

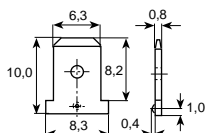
Surface-plating: Code
 bl = clean (0)
 ag = silver-plated (1)
 au = gold-plated (2)
 ni = nickel-plated (5)
 sn = pure tin-plated (7)

6,3 mm



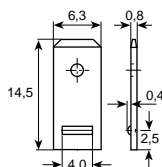
Artikel-Nr. → **3868R.2 () BZ**
 Numéro d'article Part-No.

6.3x0.8
 1000



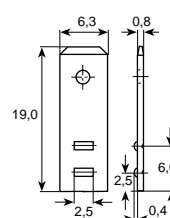
Artikel-Nr. → **3868M.2 () BZ**
 Numéro d'article Part-No.

6.3x0.8
 1000



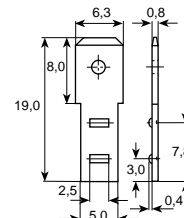
Artikel-Nr. → **3840 1SB.9 () ST**
 Numéro d'article Part-No.

6.3x0.8
 2000



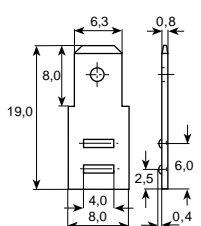
Artikel-Nr. → **3840B 2SB.95 ST ni**
 Numéro d'article Part-No.

6.3x0.8
 1000



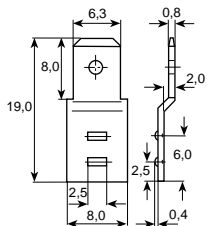
Artikel-Nr. → **3840C 2SB.95 ST ni**
 Numéro d'article Part-No.

6.3x0.8
 1000



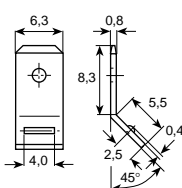
Artikel-Nr. → **3840 2SBS.80 RF bl**
 Numéro d'article Part-No.

3840 2SB.9 () ST
 6.3x0.8
 1000



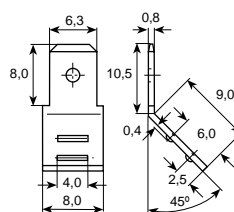
Artikel-Nr. → **3840A 2SBA.9 () ST**
 Numéro d'article Part-No.

6.3x0.8
 1000



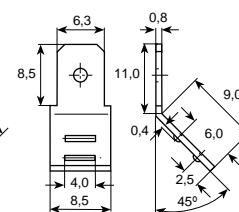
Artikel-Nr. → **3841 1SBI.80 RF bl**
 Numéro d'article Part-No.

3841 1SBI.9 () ST
 6.3x0.8
 2000



Artikel-Nr. → **3841 2SBA.9 () ST**
 Numéro d'article Part-No.

6.3x0.8
 1000



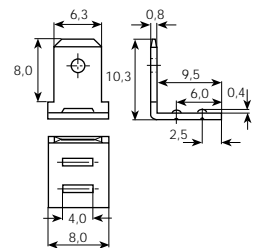
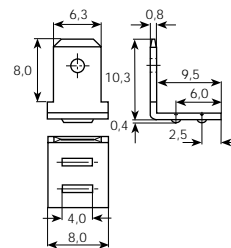
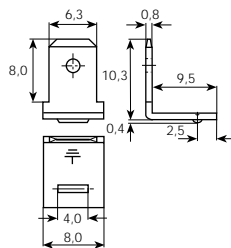
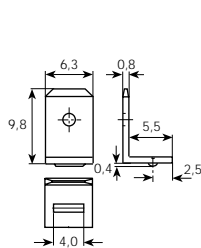
Artikel-Nr. → **3841 2SBS.80 RF bl**
 Numéro d'article Part-No.

6.3x0.8
 1000

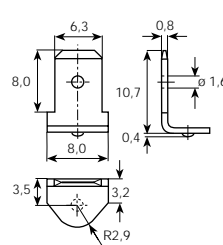
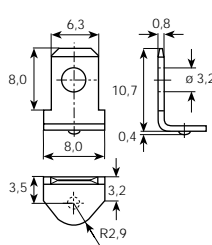
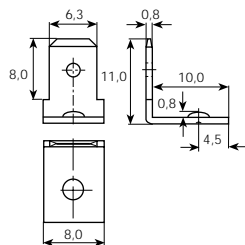


Vogt Verbindungstechnik

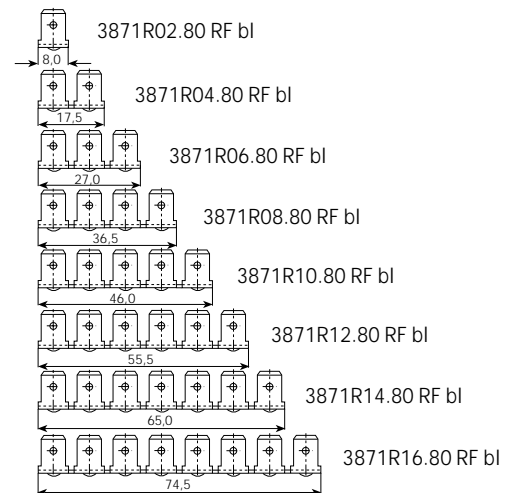
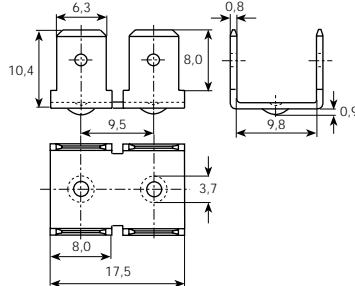
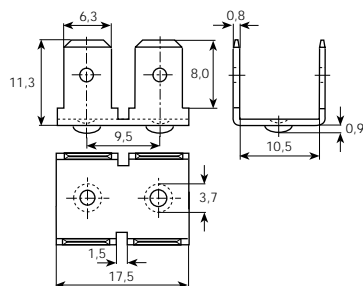
6,3 mm	Steckzungen für Schweissanschluss	Languettes pour soudage par points	Tabs for spot welding
	Masse im Steckbereich DIN 46342 Teil 1	Dimensions zone d'emboîtement selon DIN 46342 partie 1	Dimensions in the tab sector DIN 46342 part 1



Artikel-Nr. Numéro d'article Part-No. →	3840 1SB90.9() ST 6.3x0.8 2000	3842 1SBAE.80 RF bl *1 3842 1SBAE.9() ST *1 6.3x0.8 1000	3842 2SBA.9() ST 6.3x0.8 1000
Stand.-Packg.			



Artikel-Nr. Numéro d'article Part-No. →	3841 1SBK.80 RF bl 6.3x0.8 2000	3846T.7() NS 6.3x0.8 1000	3868Z.7() NS 6.3x0.8 2000
Stand.-Packg.			



Artikel-Nr. Numéro d'article Part-No. →	3871L.80 RF bl 6.3x0.8 500	3871R04.80 RF bl 6.3x0.8 500	3871R02.80 RF bl 3871R04.80 RF bl 3871R06.80 RF bl 3871R08.80 RF bl 3871R10.80 RF bl 3871R12.80 RF bl 3871R14.80 RF bl 3871R16.80 RF bl
Stand.-Packg.			

*1 Mit Erdungszeichen / Avec symbole de prise de terre / With earth sign