



# Vogt Verbindungstechnik

## Crimpkabelschuhe lose Ausführung

DIN 46225

## Cosses à sertir en vrac

DIN 46225

## Single ring terminals

DIN 46225

Werkstoff:  
MS = Messing

Matière:  
MS = laiton

Material:  
MS = brass

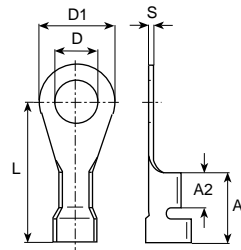
Oberflächenbehandlung: Code  
 bl = blank (0)  
 sn = reinverzinkt (7)

Traitements de surface: Code  
 bl = brut (0)  
 sn = étamage pur (7)

Surface-plating: Code  
 bl = clean (0)  
 sn = pure tin-plated (7)

**Bestellbeispiel**  
**Exemple de commande:**  
**Example of order:**

**3310A.67**  
 (3310A MS sn)



mm <sup>2</sup> (AWG)	für Bolzen pour borne for stud	Artikel-Nr. Numéro d'article Part-No.	DIN 46 225	øD mm	øD1 mm	L mm	A1 mm	A2 mm	S mm	Stand.- Packg.	Werkzeuge Outils Tools
<b>0.5-1</b> (22-18)	M3	<b>3310A.6( )</b>	A3-1	3.2	8	18	9	4.5	0.6	1000	<b>3971</b> (ohne Führung) <b>3984A / 3997</b>
	M4	<b>3316A.6( )</b>	A4-1	4.3	8	18	9	4.5	0.6	1000	
	M5	<b>3320A.6( )</b>	A5-1	5.3	9.5	17.5	9	4.5	0.6	1000	
<b>1.5-2.5</b> (16-14)	M3	<b>3330A.6( )</b>	A3-2.5	3.2	8	18	9	4.5	0.6	1000	
	M4	<b>3334A.6( )</b>	A4-2.5	4.3	8	18	9	4.5	0.6	1000	
	M5	<b>3340A.6( )</b>	A5-2.5	5.3	9.5	17.5	9	4.5	0.6	1000	

## Crimpkabelschuhe in Bandform

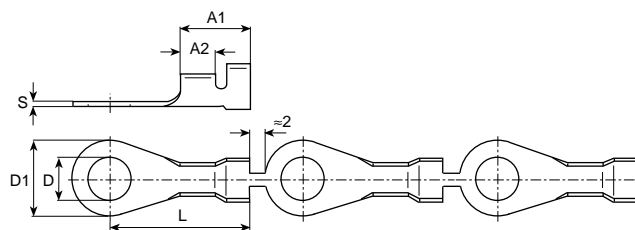
DIN 46225

## Cosses à sertir en bande

DIN 46225

## Ring terminals in chain form

DIN 46225



mm <sup>2</sup> (AWG)	für Bolzen pour borne for stud	Artikel-Nr. Numéro d'article Part-No.	DIN 46 225	øD mm	øD1 mm	L mm	A1 mm	A2 mm	S mm	Rolle Bobine Reel
<b>0.5-1</b> (22-18)	M3	<b>33101A.6( )</b>	A3-1	3.2	8	18	9	4.5	0.6	à 8'000
	M4	<b>33161A.6( )</b>	A4-1	4.3	8	18	9	4.5	0.6	à 6'000
	M5	<b>33201A.6( )</b>	A5-1	5.3	9.5	17.5	9	4.5	0.6	à 6'000
<b>1.5-2.5</b> (16-14)	M3	<b>33301A.6( )</b>	A3-2.5	3.2	8	18	9	4.5	0.6	à 5'000
	M4	<b>33341A.6( )</b>	A4-2.5	4.3	8	18	9	4.5	0.6	à 5'000
	M5	<b>33401A.6( )</b>	A5-2.5	5.3	9.5	17.5	9	4.5	0.6	à 5'000