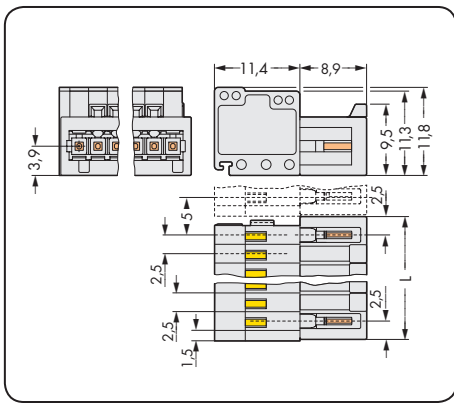
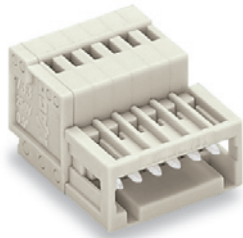


Rastermaß 2,5 mm / 0.098 in

0,08 - 0,5 mm ²	AWG 28 - 20
160 V/2,5 kV/2 6 A	150 V/4 A



$L = (\text{Polzahl} + 1) \times \text{Rastermaß}$

Polzahl	Bestellnr.	VPE
Stiffliste, lichtgrau		
2	733-202	200
3	733-203	200
4	733-204	200
5	733-205	100
6	733-206	100
7	733-207	100
8	733-208	100
10	733-210	100
12	733-212	50