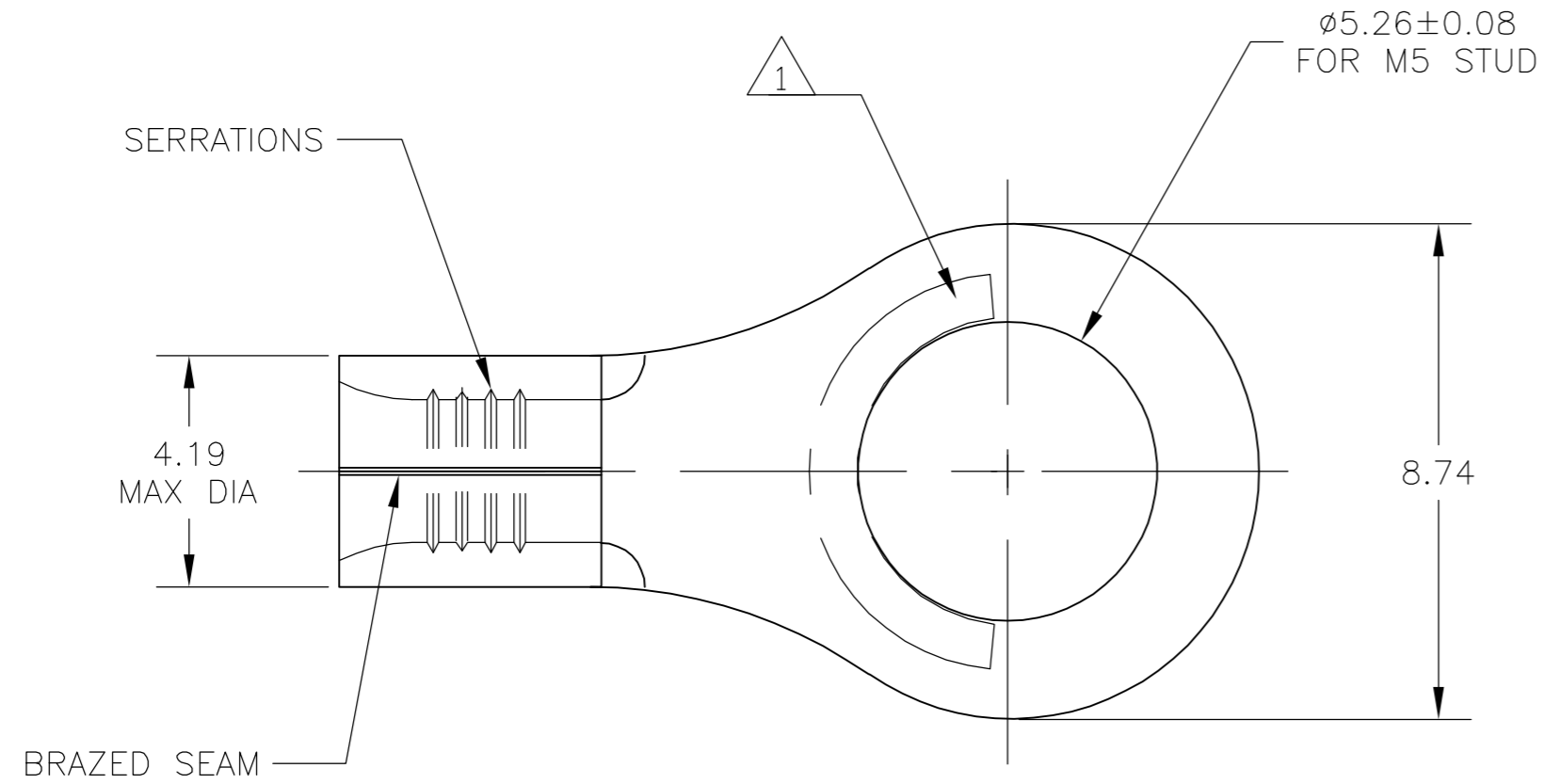


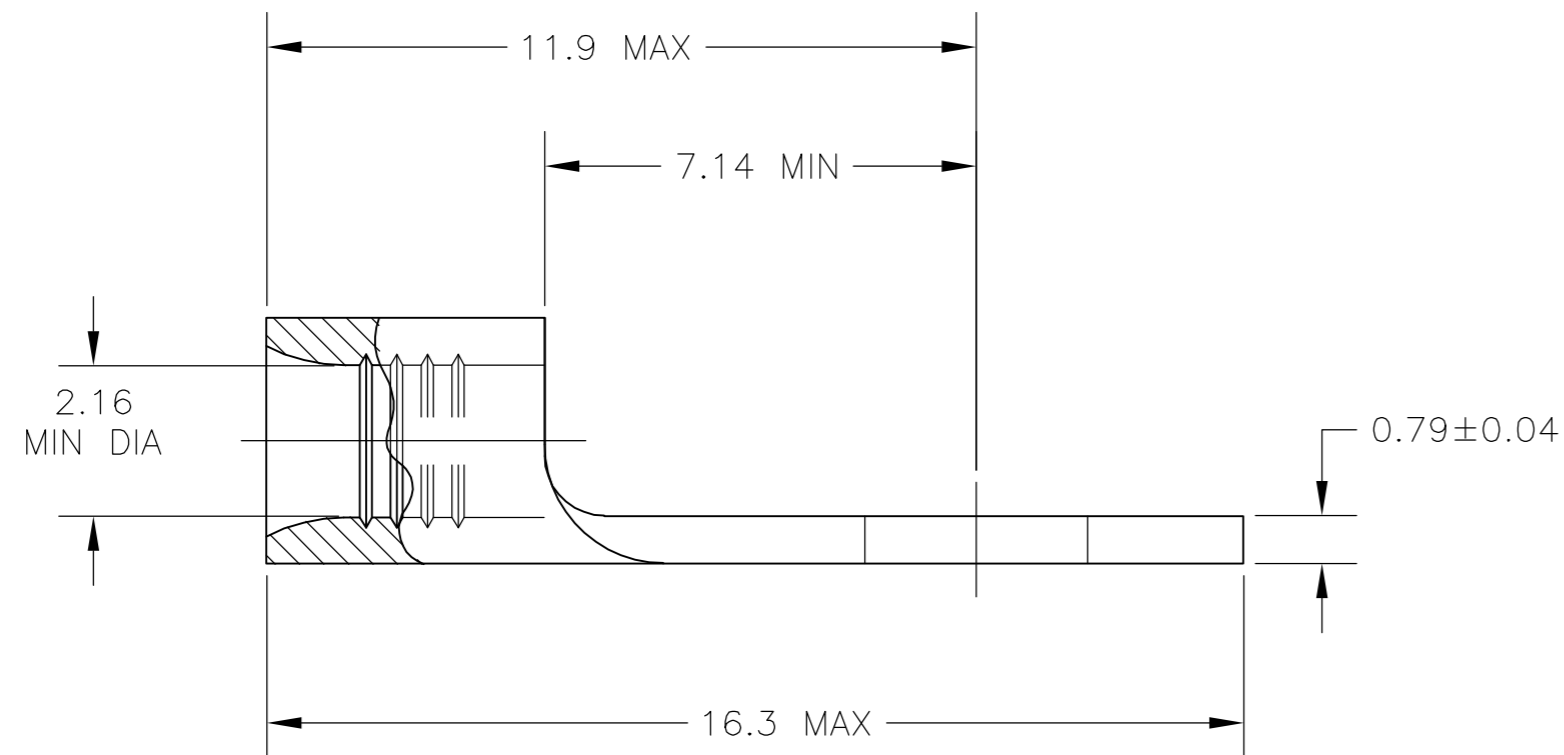
THIS DRAWING IS UNPUBLISHED. RELEASED FOR PUBLICATION
 © COPYRIGHT BY TYCO ELECTRONICS CORPORATION. ALL RIGHTS RESERVED.

LOC	DIST	REVISIONS					
G	14	P	LTR	DESCRIPTION	DATE	DWN	APVD
		A1		REV PER ECR 07-007115	03APR07	JR	TM



AMP WIRE RANGE	Listed FILE E13288	LR7189 Certified
16-14 AWG SOLID OR STRANDED	16-14 AWG SOLID OR STRANDED	16-14 AWG SOLID OR STRANDED

- ① STAMP AMP 16-14* APPROX AS SHOWN
- ② TIN PLATE 0.00254 MIN THK PER ASTM B545
- ③ COPPER PER ASTM B-152, ANNEALED

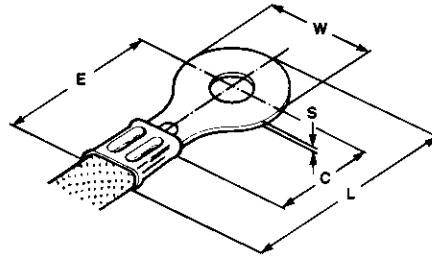


②	5000	ON TAPE	2-130106-1
	1000	LOOSE PIECE	130106
FINISH	QTY	PACKAGING TYPE	PART NO.

AMP INCORPORATED CUSTOMER SERVICE SYSTEMS		MAX RECOMMENDED OPERATING TEMPERATURE: 170°C MAX	THIS DRAWING IS A CONTROLLED DOCUMENT.		DWN JR RUTH 03APR07	Tyco Electronics Corporation Harrisburg, PA 17105-3608
			DIMENSIONS: MM INCHES	TOLERANCES UNLESS OTHERWISE SPECIFIED:	CHK T MICHIELUTTI 03APR07	
FOR ADDITIONAL PRODUCT INFORMATION OR COPIES OF DRAWINGS AND TECHNICAL DOCUMENTS	PRODUCT INFORMATION CENTER 1-800-522-6752	VOLTAGE RATING: N/A		0 PLC ± - 1 PLC ± 0.2 2 PLC ± - 3 PLC ± - 4 PLC ± - ANGLES ± -	APVD T MICHIELUTTI 03APR07	TERMINAL, RING TONGUE, SOLISTRAND
FOR APPLICATION TOOLING INFORMATION	TOOLING ASSISTANCE CENTER 1-800-722-1111	CIRCULAR MIL AREA: 1.04-2.62mm² [2,050-5,180] SOLID OR STRANDED			MATERIAL	
FOR ORDER ENTRY	1-800-526-5142	THIS DRAWING IS A CONTROLLED DOCUMENT FOR AMP INCORPORATED. IT IS SUBJECT TO CHANGE AND THE CONTROLLING ENGINEERING ORGANIZATION SHOULD BE CONTACTED FOR THE LATEST REVISION.	③	SEE TABLE	WEIGHT	RESTRICTED TO
			CUSTOMER DRAWING	SCALE	SHEET	REV

AMP SOLISTRAND

Ringzungen,
0,25–6,6 mm²



AMP SOLISTRAND

Ring Tongues,
0.25–6.6 mm²

Leiterquerschnittsbereich 0,35/0,5/0,75/1,0/1,5 mm²
AWG 22–16 (0,25–1,6 mm²)

Wire Size Range 0.35/0.5/0.75/1.0/1.5 mm²
AWG 22–16 (0.25–1.6 mm²)

Bolzen Bolt M	Bolzenloch Stud Hole (mm)	Abmessungen/Dimensions (mm)					Bestell-Nummer Part Number	Werkzeug* Tooling*
		S	W	C min.	L max.	E		
2,6	3,0	0,8	5,5	4,0	11,4	8,6	34104-0	Handzange/Hand Tool 49935-0/525693-0** oder/or 169400-0 mit Matrize/with Die Set 169409-0
3,0	3,7	0,8	5,5	4,0	11,4	8,6	34105-0	
4,0	4,3	0,8	7,1	6,4	14,7	11,0	34108-0	
4,0	4,3	0,8	7,9	7,1	15,9	11,9	34111-0	
5,0	5,2	0,8	7,9	7,1	15,9	11,9	130017-0	
6,0	6,3	0,8	11,9	11,0	21,6	15,7	130058-0	
6,0	6,7	0,8	11,9	11,1	21,8	15,7	34113-0	
8,0	8,3	0,8	11,9	11,1	21,8	15,7	34114-0	

Leiterquerschnittsbereich 1,0/1,5/2,5 mm²
AWG 16–14 (1,0–2,6 mm²)

Wire Size Range 1.0/1.5/2.5 mm²
AWG 16–14 (1.0–2.6 mm²)

Bolzen Bolt M	Bolzenloch Stud Hole (mm)	Abmessungen/Dimensions (mm)					Bestell-Nummer Part Number	Werkzeug* Tooling*
		S	W	C min.	L	E		
2,6	3,0	0,8	6,4	4,3	12,2	9,0	34119-0	Handzange/Hand Tool 49935-0/525693-0** oder/or 169400-0 mit Matrize/with Die Set 169409-0
3,0	3,7	0,8	6,4	4,3	12,3	9,0	34120-0	
4,0	4,3	0,8	8,7	7,1	16,3	12,0	34122-0	
5,0	5,2	0,8	8,7	7,3	16,3	11,9	130106-0	
6,0	6,3	0,8	11,9	11,1	21,8	15,8	130130-0	
6,0	6,7	0,8	11,9	11,1	21,7	15,8	34124-0	
8,0	8,3	0,8	11,9	11,1	21,7	15,8	34125-0	
10,0	10,5	0,8	16,7	13,5	26,5	18,1	160140-0	

Leiterquerschnittsbereich 4,0/6,0 mm²
AWG 12–10 (2,7–6,6 mm²)

Wire Size Range 4.0/6.0 mm²
AWG 12–10 (2.7–6.6 mm²)

Bolzen Bolt M	Bolzenloch Stud Hole (mm)	Abmessungen/Dimensions (mm)					Bestell-Nummer Part Number	Werkzeug* Tooling*
		S	W	C min.	L	E		
4,0	4,3	1,0	9,5	7,7	19,3	14,5	32994-0	Handzange/Hand Tool 49935-0/525693-0** oder/or 169400-0 mit Matrize/with Die Set 169409-0
5,0	5,2	1,0	9,5	7,7	19,1	14,3	130191-0	
6,0	6,2	1,0	12,7	8,7	21,8	15,4	165026-0	
6,0	6,7	1,0	12,7	8,7	22,0	15,5	35772-0	
8,0	8,3	1,0	12,7	8,7	21,8	15,4	35773-0	
10,0	10,3	1,0	19,1	15,9	32,3	22,2	160038-0	
10,0	10,5	1,0	15,1	13,4	27,9	20,2	160121-0	

* Weitere Verarbeitungsmöglichkeiten siehe Seiten 22-63–22-78.
** Alternative aus Großbritannien.

* Additional Termination Possibilities see pages 22-63–22-78.
** Great Britain Alternative.