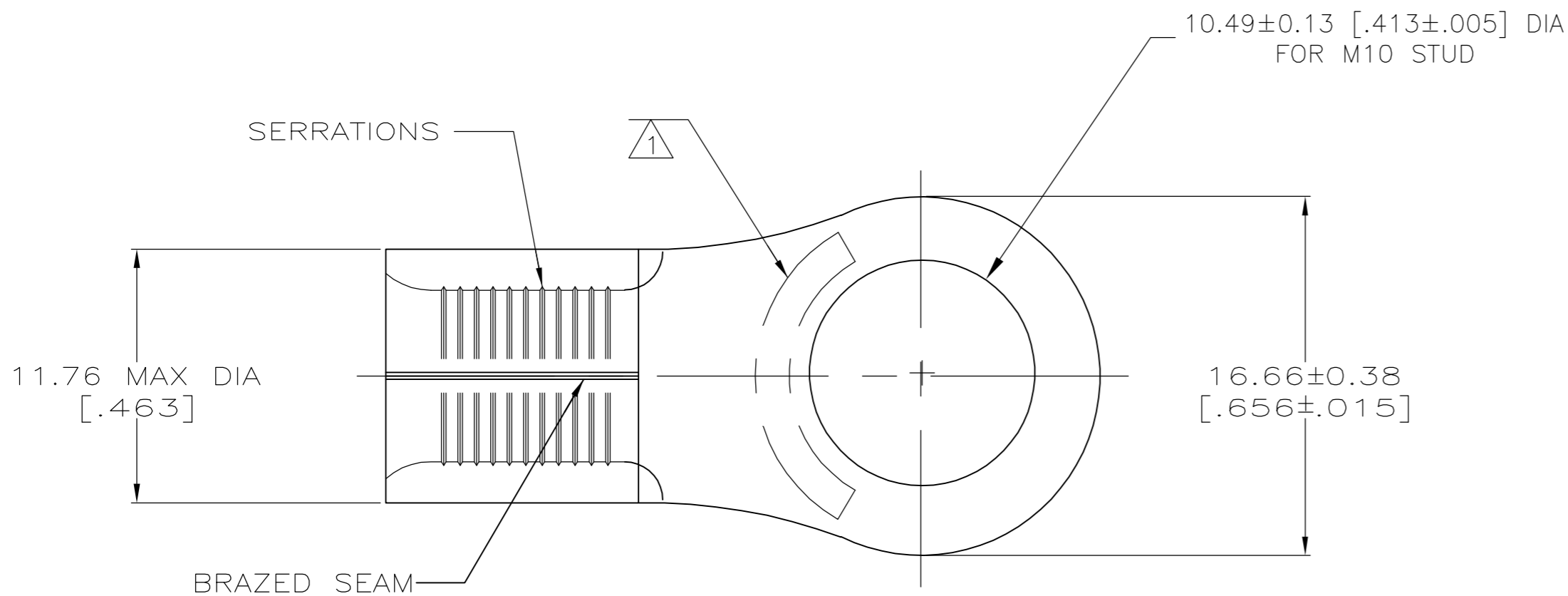
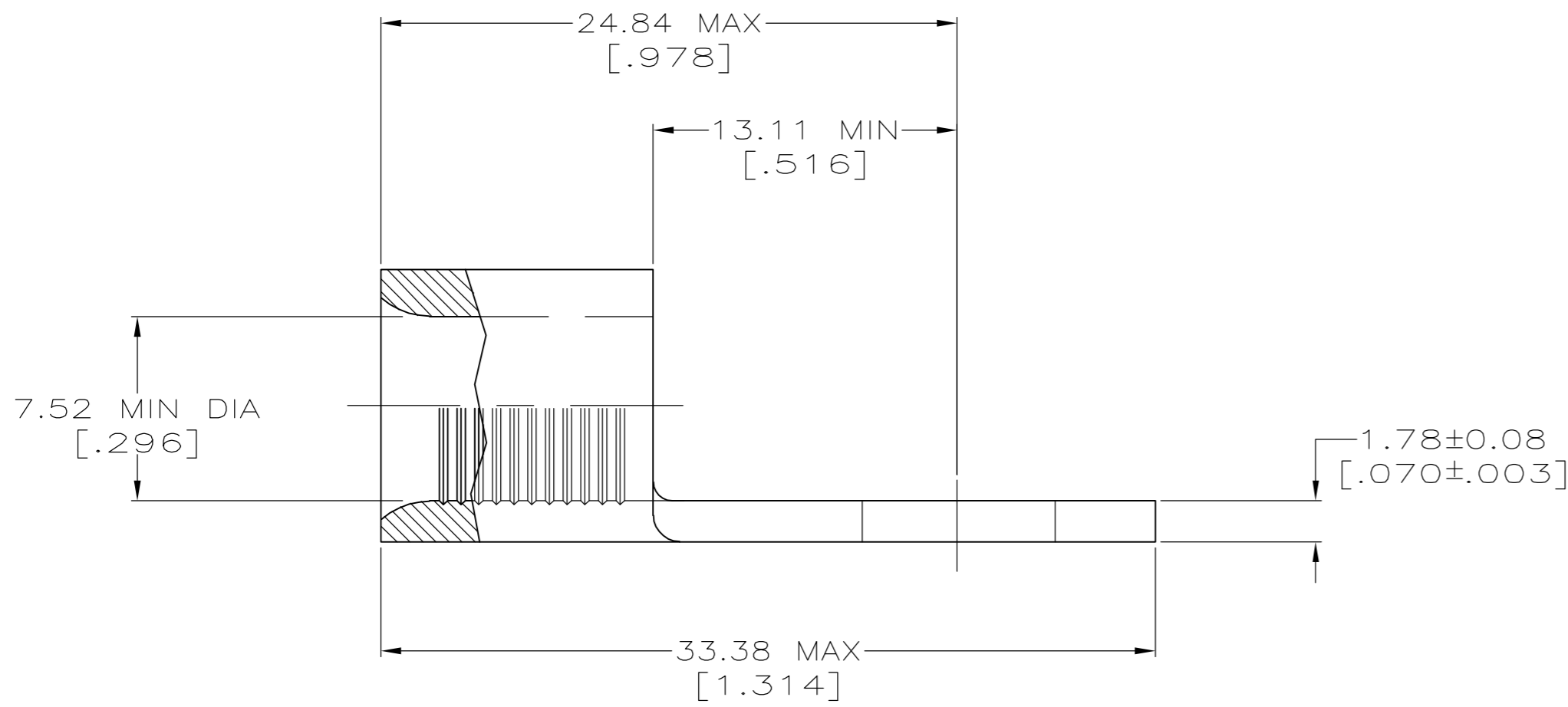


THIS DRAWING IS UNPUBLISHED. RELEASED FOR PUBLICATION  
 © COPYRIGHT BY TYCO ELECTRONICS CORPORATION. ALL RIGHTS RESERVED.

LOC	DIST	REVISIONS			
P	LTR	DESCRIPTION	DATE	DWN	APVD
G	14	C	REV PER ECR 06-005021	01MAR06	JR TM



- STAMP AMP 4\* APPROX AS SHOWN
- 2 MAX RECOMMENDED OPERATING TEMP IS 170°C MAX
- 3 VOLTAGE RATING, NOT APPLICABLE
- 4 WIRE CROSS SECTION AREA:  
16.8-26.7mm<sup>2</sup> [33,100-52,600] CIR MIL  
SOLID OR STRANDED
- 5 COPPER PER ASTM B-152, ANNEALED
- 6 TIN PLATE 0.00254 [.000100] MIN PER ASTM B545



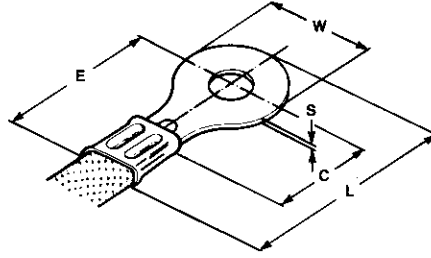
100	LOOSE PIECE	160075
QTY	PACKAGING TYPE	PART NO.

THIS DRAWING IS A CONTROLLED DOCUMENT.		DWN	JR RUTH	01MAR06	 Tyco Electronics Corporation Harrisburg, PA 17105-3608								
DIMENSIONS: INCHES		CHK	T MICHIELUTTI	01MAR06									
TOLERANCES UNLESS OTHERWISE SPECIFIED:		APVD	T MICHIELUTTI	01MAR06									
0 PLC ± - 1 PLC ± - 2 PLC ± - 3 PLC ± 0.20[.008] 4 PLC ± - ANGLES ± - FINISH		PRODUCT SPEC	NAME			TERMINAL, RING TONGUE, SOLISTRAND							
MATERIAL	5	FINISH	6	WEIGHT	-	SIZE	A2	CAGE CODE	00779	DRAWING NO	C=160075	RESTRICTED TO	-
CUSTOMER DRAWING			SCALE	4:1	SHEET	1 of 1	REV	C					

160075

**AMP SOLISTRAND**

Ringzungen,  
6,7–304,0 mm<sup>2</sup>



**AMP SOLISTRAND**

Ring Tongues,  
6.7–304.0 mm<sup>2</sup>

Leiterquerschnittsbereich 10,0 mm<sup>2</sup>  
AWG 8 (6,7–10,5 mm<sup>2</sup>)

Wire Size Range 10.0 mm<sup>2</sup>  
AWG 8 (6.7–10.5 mm<sup>2</sup>)

Bolzen Bolt M	Bolzenloch Stud Hole (mm)	Abmessungen/Dimensions (mm)					Bestell-Nummer Part Number	Werkzeug Tooling
		S	W	C min.	L	E		
5.0	5.2	1.2	11.9	9.1	23.7	17.7	160013-0	siehe Seiten 22-63–22-78 see pages 22-63–22-78
6.0	6.1	1.2	11.9	9.1	23.8	17.9	130550-0	
6.0	6.7	1.2	11.9	9.1	23.7	17.7	33461-0	
8.0	8.3	1.2	15.1	13.5	29.7	22.1	33462-0	
10.0	10.5	1.2	15.1	13.5	29.7	22.2	160056-0	
12.0	13.0	1.2	31.8	25.4	49.9	34.0	35664-0	

Leiterquerschnittsbereich 16,0 mm<sup>2</sup>  
AWG 6 (10,6–16,7 mm<sup>2</sup>)

Wire Size Range 16.0 mm<sup>2</sup>  
AWG 6 (10.6–16.7 mm<sup>2</sup>)

Bolzen Bolt M	Bolzenloch Stud Hole (mm)	Abmessungen/Dimensions (mm)					Bestell-Nummer Part Number	Werkzeug Tooling
		S	W	C min.	L	E		
5.0	5.2	1.45	11.9	13.5	29.7	23.7	130552-0	siehe Seiten 22-63–22-78 see pages 22-63–22-78
6.0	6.3	1.45	11.9	13.5	29.7	23.7	130554-0	
6.0	6.7	1.45	15.9	13.5	31.8	23.8	33465-0	
8.0	8.3	1.45	15.9	13.5	31.6	23.7	33466-0	
10.0	10.3	1.45	15.9	13.5	31.6	23.7	160032-0	
12.0	13.0	1.45	22.2	25.4	46.7	35.9	320344-0	
12.0	13.1	1.45	31.8	25.4	51.6	35.6	36808-0	

Leiterquerschnittsbereich 25,0 mm<sup>2</sup>  
AWG 4 (16,8–26,6 mm<sup>2</sup>)

Wire Size Range 25.0 mm<sup>2</sup>  
AWG 4 (16.8–26.6 mm<sup>2</sup>)

Bolzen Bolt M	Bolzenloch Stud Hole (mm)	Abmessungen/Dimensions (mm)					Bestell-Nummer Part Number	Werkzeug Tooling
		S	W	C min.	L	E		
5.0	5.2	1.8	16.7	13.1	33.3	25.0	160119-0	siehe Seiten 22-63–22-78 see pages 22-63–22-78
6.0	6.1	1.8	16.7	13.1	33.2	24.9	130560-0	
6.0	6.7	1.8	12.7	11.1	30.5	24.1	33469-0	
8.0	8.3	1.8	16.7	13.1	33.2	24.9	33470-0	
10.0	10.5	1.8	16.7	13.1	33.2	24.9	160075-0	
12.0	13.0	1.8	22.2	25.4	48.3	37.2	327175-0	
12.0	13.1	1.8	31.8	25.4	53.1	37.1	35668-0	
16.0	16.6	1.8	31.8	25.4	53.1	37.2	35669-0	

Leiterquerschnittsbereich 35,0 mm<sup>2</sup>  
AWG 2 (26,7–42,4 mm<sup>2</sup>)

Wire Size Range 35.0 mm<sup>2</sup>  
AWG 2 (26.7–42.4 mm<sup>2</sup>)

Bolzen Bolt M	Bolzenloch Stud Hole (mm)	Abmessungen/Dimensions (mm)					Bestell-Nummer Part Number	Werkzeug Tooling
		S	W	C min.	L	E		
6.0	6.3	1.8	15.9	17.4	38.8	30.9	130562-0	siehe Seiten 22-63–22-78 see pages 22-63–22-78
6.0	6.7	1.8	22.6	17.5	42.1	30.8	320138-0	
8.0	8.3	1.8	15.9	17.4	38.8	30.9	322870-0	
8.0	8.3	1.8	22.2	17.5	42.2	30.2	35183-0	
10.0	10.5	1.8	22.2	17.4	42.0	30.9	160002-0	
12.0	13.0	1.8	22.2	17.4	42.0	30.9	35185-0	
16.0	16.6	1.8	32.0	34.1	63.7	49.8	320754-0	