















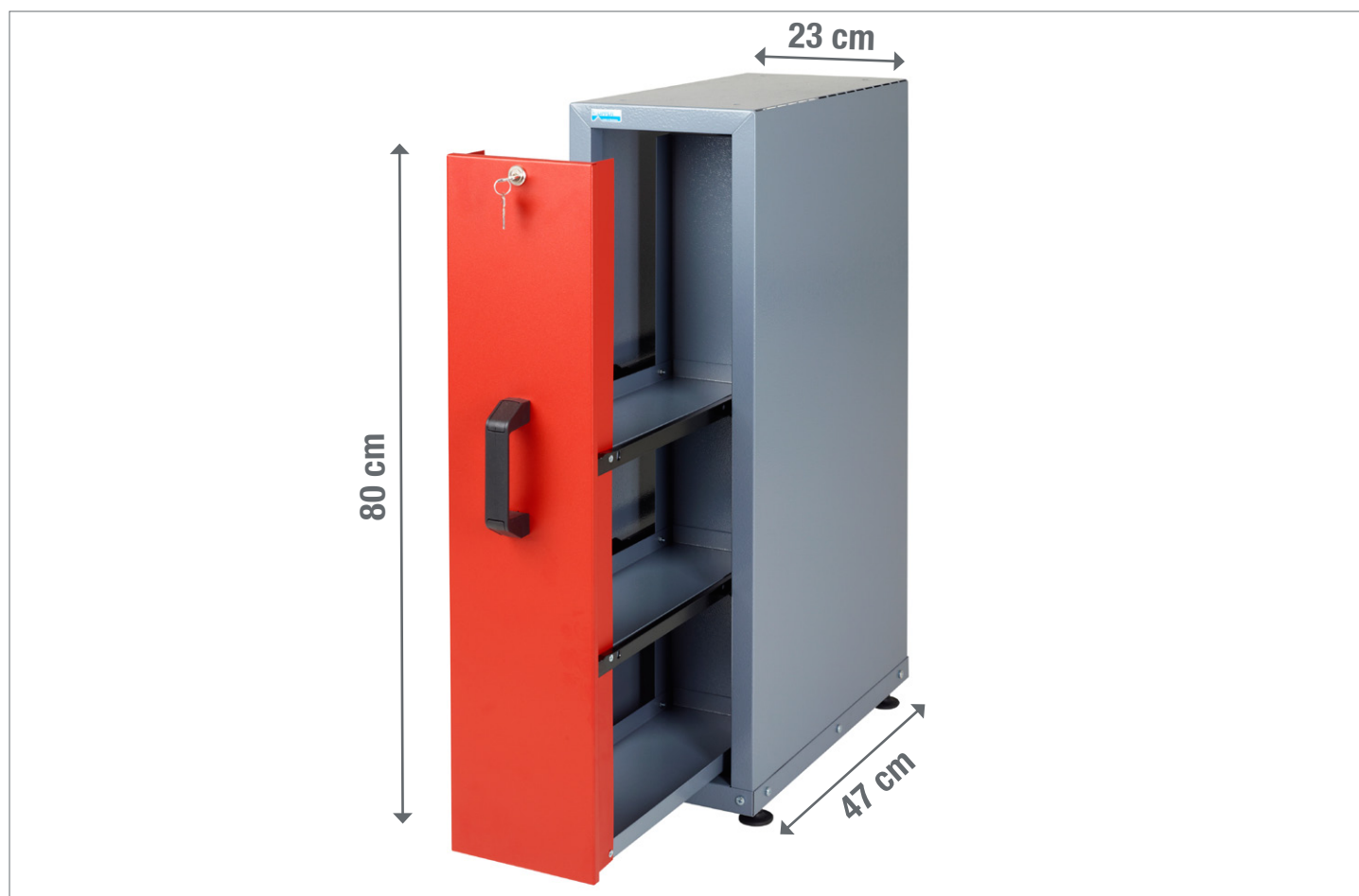


## MONTAGEANLEITUNG

-  MONTAGEANLEITUNG
-  ASSEMBLY INSTRUCTION
-  DE INSTRUCTIE VAN DE ASSEMBLAGE
-  ISTRUZIONE DELL'ASSEMBLEA
-  INSTRUCCIÓN DE ASAMBLEA
-  INSTRUCTION DE MONTAGE
-  NÁVOD K MONTÁŽI
-  MONTERINGSANVISNING

-  MONTAJ TALIMATI
-  ASENNUSOHJE
-  BRUGSANVISNING
-  BRUKSANVISNING
-  UPUTE ZA MONTAŽU
-  NAVODILA ZA MONTAŽO
-  SZERELÉSI ÚTMUTATÓ
-  INSTRUCTIUNI DE MONTAJ



Modell-Nr.

# 12160

ART.-NR. FRONT KORPUS

12161  Silber

12162  Silber

12164  Silber

12167  Silber

12166  

Friedrich Küpper GmbH  
Friedrich-Küpper-Weg  
54570 Berlingen  
Deutschland

Telefon +49 (0) 65 91 - 95 42 0  
Telefax +49 (0) 65 91 - 95 42 17  
E-Mail [info@friedrich-kuepper-gmbh.de](mailto:info@friedrich-kuepper-gmbh.de)  
Internet [www.friedrich-kuepper-gmbh.de](http://www.friedrich-kuepper-gmbh.de)

## EINZELTEILE / PIECES

A

1x

1766 mm x 465 mm



B

1x

467 mm x 232 mm



C

1x

692 mm x 146 mm



D

3x

462 mm x 143 mm



E

1x

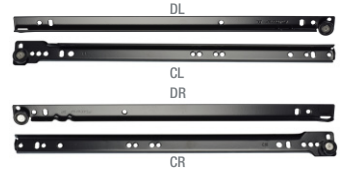
698 mm x 146 mm



X

2x

450 mm x 20 mm



Y

1x



Z

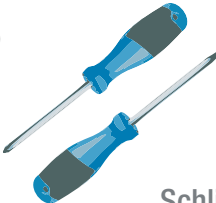

2x



BEUTELINHALT / BAG CONTENT

 <p>10x M5x10 mm</p>	 <p>10x ø 5,3 mm</p>	 <p>10x M5</p>	 <p>20x M4x10 mm</p>	 <p>20x M4</p>	 <p>2x M8x 16 mm</p>
 <p>10x M8</p>	 <p>1x</p>	 <p>1x</p>	 <p>4x</p>	 <p>4x ø 8,4 mm</p>	 <p>4x 4,5x25 mm</p>

BENÖTIGTES WERKZEUG / NEEDED TOOLS

<p>1</p>  <p>PH 1x100 PH 2x100 Schlitz 6,5x150</p>	<p>2</p>  <p>SW 7 SW 8 SW 13</p>
----------------------------------------------------------------------------------------------------------------------------------------------	----------------------------------------------------------------------------------------------------------------------------

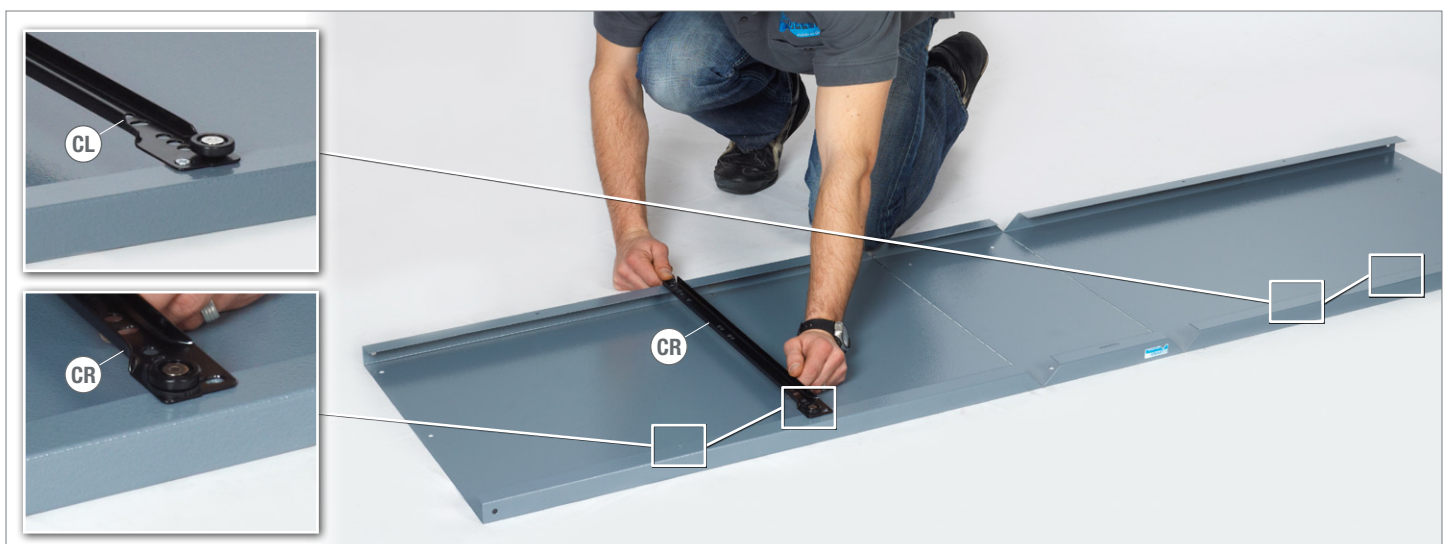
1.



2.



3.  2x CL  2x CR

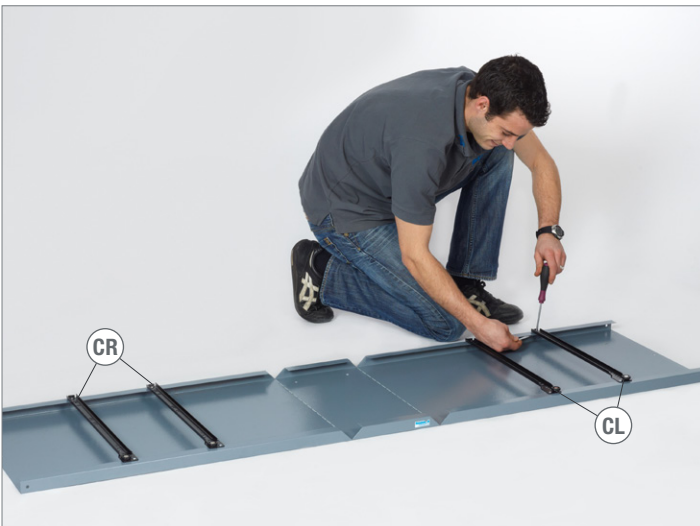


4. 8x M4 8x M4 x10

② SW 7 ① PH1 x100



5.



6.



7.



8.

10x M5

10x M5 x 10

10x 5,3 mm

②  SW8

①  PH2x100



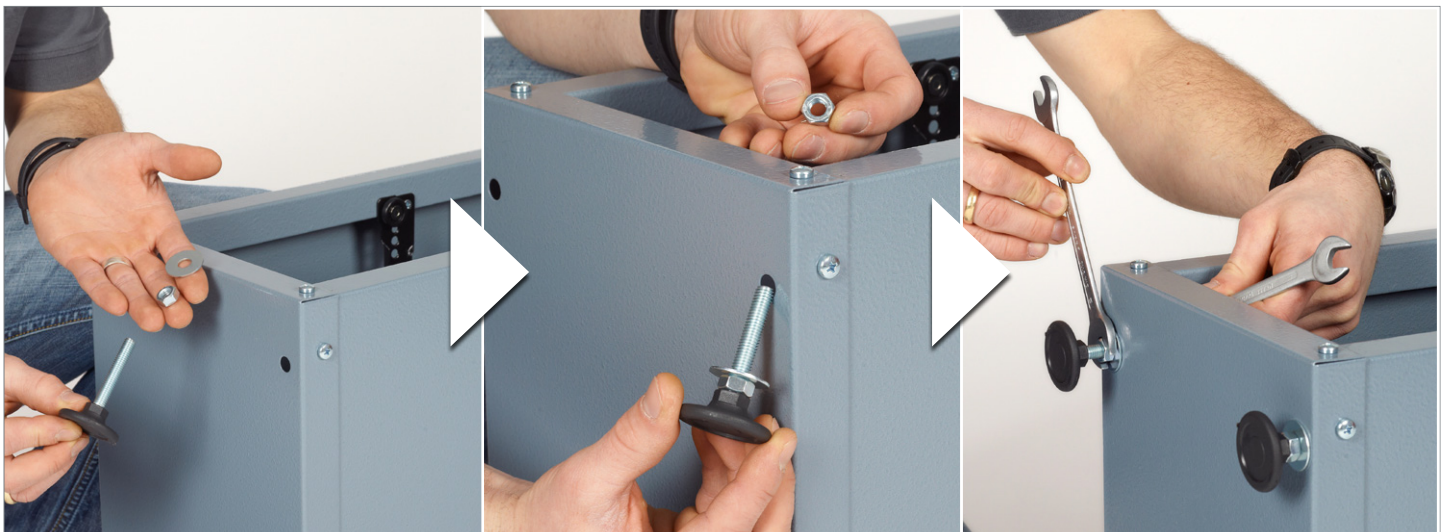
9.

8x M8

4x 8,4 mm

4x

②  SW 13



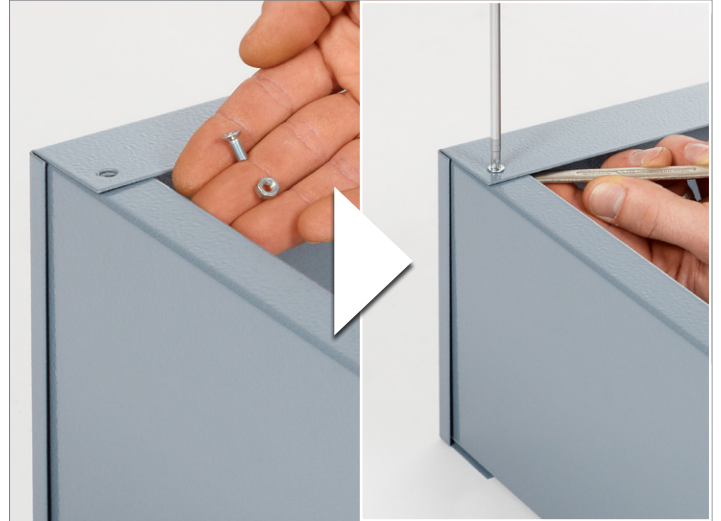
10.



11.

2x M4 2x M4x10

② SW 7 ① PH 1x100



12.

2x M4 2x M4x10

② SW 7 ① PH 1x100

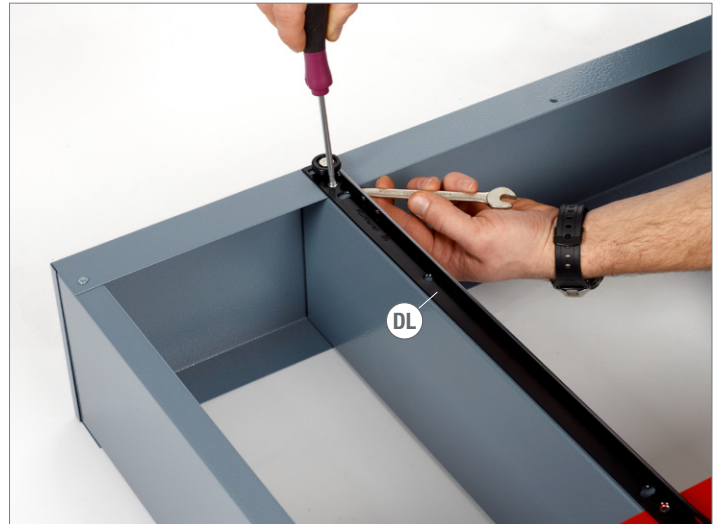


13.



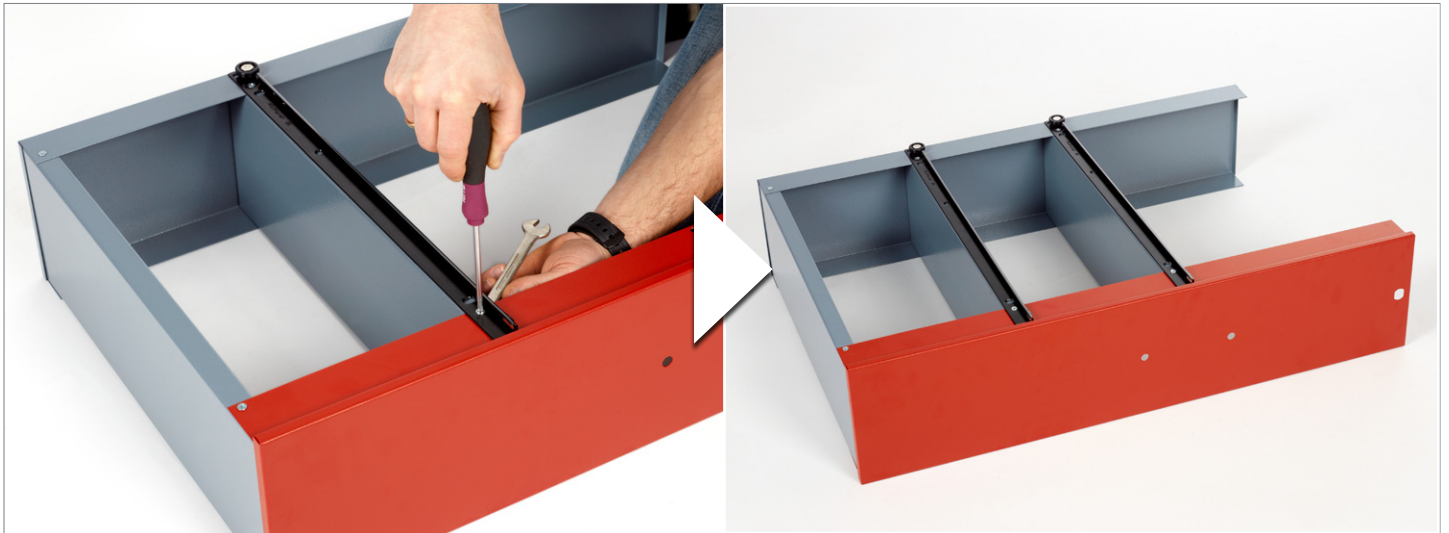
14.

(X) 2x DL   
  4x M4   
  4x M4 x 10   
 (2)  SW 7   
 (1)  PH 1 x 100



15.

(2)  SW 7   
 (1)  PH 1 x 100



16.

 4x M4   
  4x M4 x 10   
 (X) 2x DR   
 (2)  SW 7   
 (1)  PH 1 x 100





17.  2x M8x16

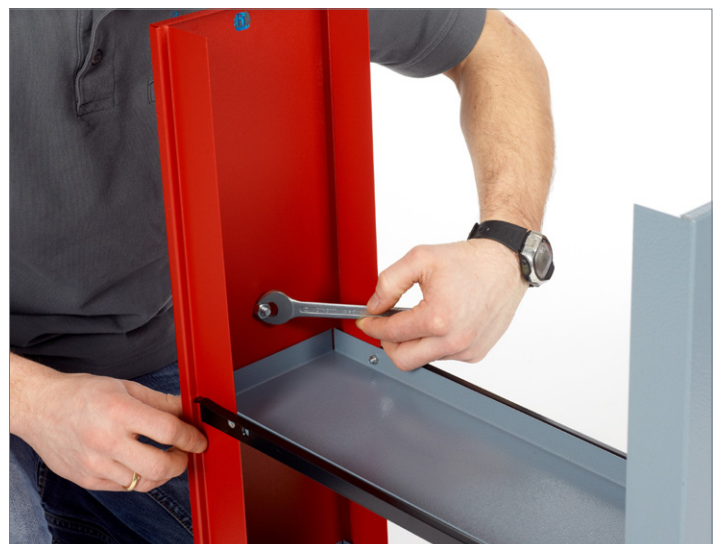


18.  2x M8



19.

②  SW 13



20.



21.



22.



23.



24.



Modell-Nr.

**12160**