



# Titanium Edition LNBs



## TITANIUM®



**0,1 dB**



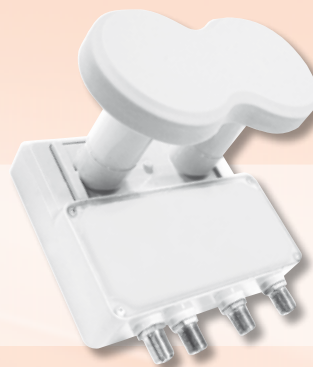
**Monoblock  
Single TMS**



**Twin  
Monoblock  
TMT 43**



**Single  
Monoblock  
TMS 43**



**Quad-Switch  
Monoblock  
TMQ 43**

### Technische Daten / Technical Data

| Model                        | Monoblock TMS    | Single Monoblock TMS 43 | Twin Monoblock TMT 43 | Quad-Switch Monoblock TMQ 43 |
|------------------------------|------------------|-------------------------|-----------------------|------------------------------|
| Order-No.                    | 10-99-12-0006    | 10-99-12-0011           | 10-99-22-0007         | 10-99-42-0006                |
| Feed-Diameter                | 40 mm            | 40 mm                   | 40 mm                 | 40 mm                        |
| <b>Low Band</b>              |                  |                         |                       |                              |
| Input Frequency Range        | 10,7 ~ 11,7 GHz  | 10,7 ~ 11,7 GHz         | 10,7 ~ 11,7 GHz       | 10,7 ~ 11,7 GHz              |
| Output Frequency Range       | 950 ~ 1950 MHz   | 950 ~ 1950 MHz          | 950 ~ 1950 MHz        | 950 ~ 1950 MHz               |
| Oszillator Frequency         | 9,75 GHz         | 9,75 GHz                | 9,75 GHz              | 9,75 GHz                     |
| Noise Figure                 | 0,1 dB           | 0,1 dB                  | 0,1 dB                | 0,1 dB                       |
| Control Signal               | Ca/Cb            | Ca/Cb                   | Ca/Cb                 | Ca/Cb                        |
| <b>High Band</b>             |                  |                         |                       |                              |
| Input Frequency Range        | 11,7 ~ 12,75 GHz | 11,7 ~ 12,75 GHz        | 11,7 ~ 12,75 GHz      | 11,7 ~ 12,75 GHz             |
| Output Frequency Range       | 1100 ~ 2150 MHz  | 1100 ~ 2150 MHz         | 1100 ~ 2150 MHz       | 1100 ~ 2150 MHz              |
| Oszillator Frequency         | 10,6 GHz         | 10,6 GHz                | 10,6 GHz              | 10,6 GHz                     |
| Noise Figure                 | 0,1 dB           | 0,1 dB                  | 0,1 dB                | 0,1 dB                       |
| Control Signal               | Ca & Cc/Cb & Cc  | Ca & Cc/Cb & Cc         | Ca & Cc/Cb & Cc       | Ca & Cc/Cb & Cc              |
| <b>Low &amp; High Band</b>   |                  |                         |                       |                              |
| Conversion Gain              | 50 dB            | 50 dB                   | 50 dB                 | 50 dB                        |
| Control Signal Ca Vertikal   | 11,0 ~ 14,2 V    | 11,0 ~ 14,2 V           | 11,0 ~ 14,2 V         | 11,0 ~ 14,2 V                |
| Control Signal Cb Horizontal | 15,5 ~ 21 V      | 15,5 ~ 21 V             | 15,5 ~ 21 V           | 15,5 ~ 21 V                  |
| Control Signal Cc Band       | 22 +/- 4 kHz     | 22 +/- 4 kHz            | 22 +/- 4 kHz          | 22 +/- 4 kHz                 |
| Power Consumption max.       | 110 mA           | 110 mA                  | 240 mA                | 240 mA                       |
| Working Temperature          | -40 ~ +60 °C     | -40 ~ +60 °C            | -40 ~ +60 °C          | -40 ~ +60 °C                 |
| Connection                   | F-type           | F-type                  | F-type                | F-type                       |
| HD TV                        | ✓                | ✓                       | ✓                     | ✓                            |
| Guarantee                    | 5 year           | 5 year                  | 5 year                | 5 year                       |