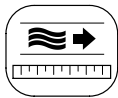
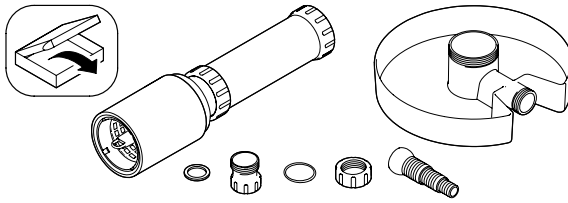




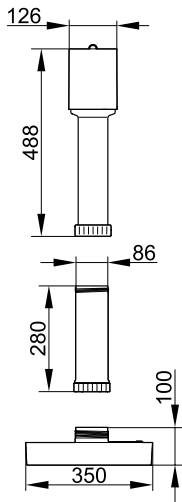
## AquaSkim 20/40

- DK Brugsanvisning
- NO Bruksanvisning
- SE Bruksanvisning
- FI Käyttöohje
- HU Használati útmutató
- PL Instrukcja użytkowania
- CZ Návod k použití

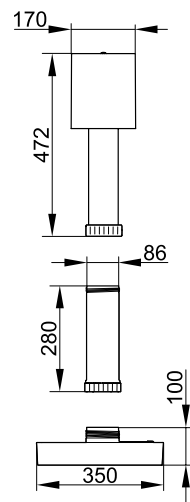




AquaSkim 20



AquaSkim 40

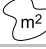


ASM0001




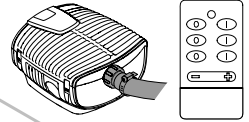
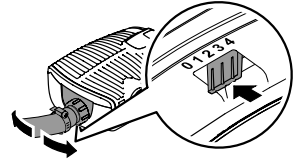
AquaSkim		20	40	
m <sup>2</sup>		20 m <sup>2</sup>	40 m <sup>2</sup>	
		2000-6000 l/h	6000-16000 l/h	
AquaMax Eco	Premium	4000	3, 4	
		6000	2, 3, 4	
		8000	1, 2, 3	
		10000	1, 2	
		12000	–	
		16000	–	
	Twin	20000	–	min. 50 %
		30000	–	min. 50 %



l ≤ 3 m  
Ø 1.5"

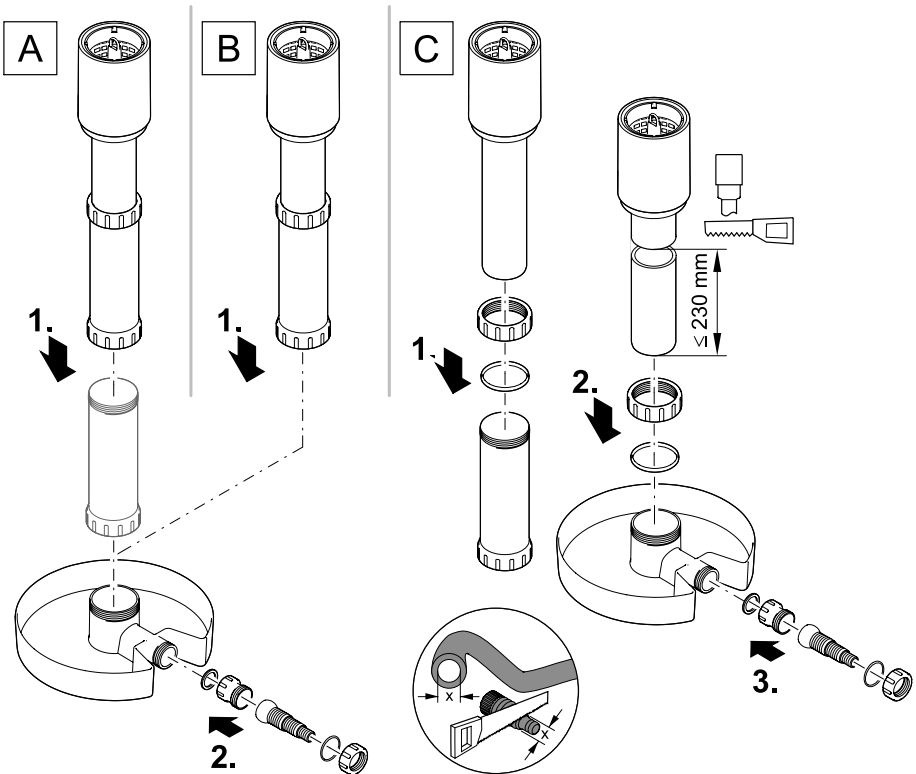


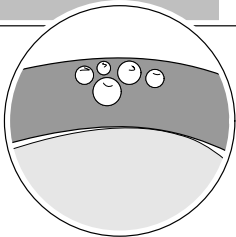
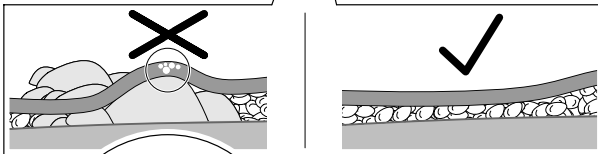
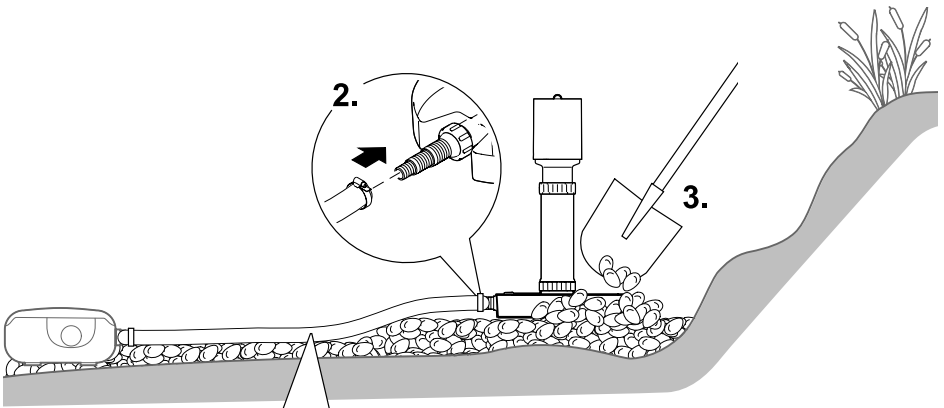
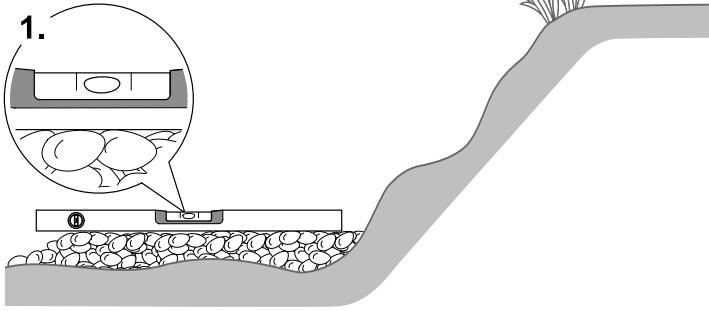


ASM0006



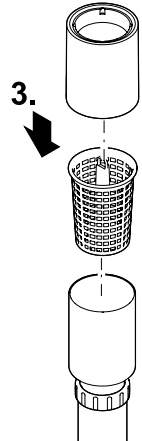
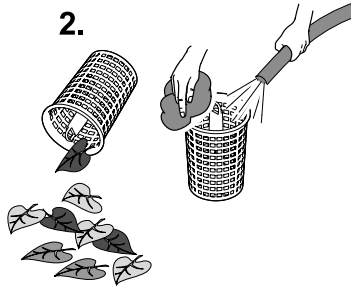
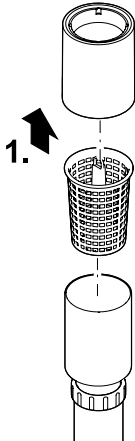
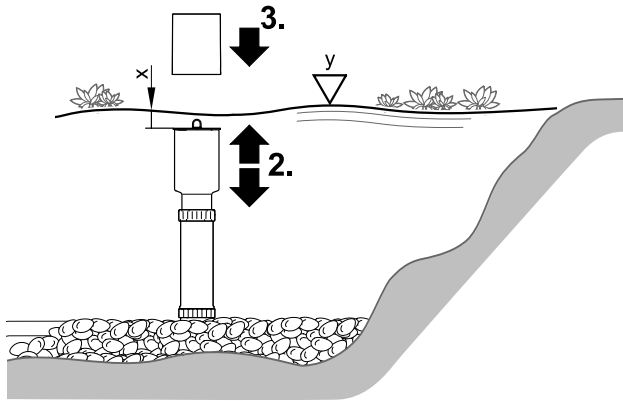
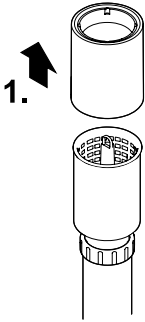
	[mm]		
AquaSkim	A	B	C
20	min. 850 max. 1070	min. 600 max. 850	min. 370 max. 600
40	min. 880 max. 1100	min. 630 max. 880	min. 380 max. 630
	 ID 35262		







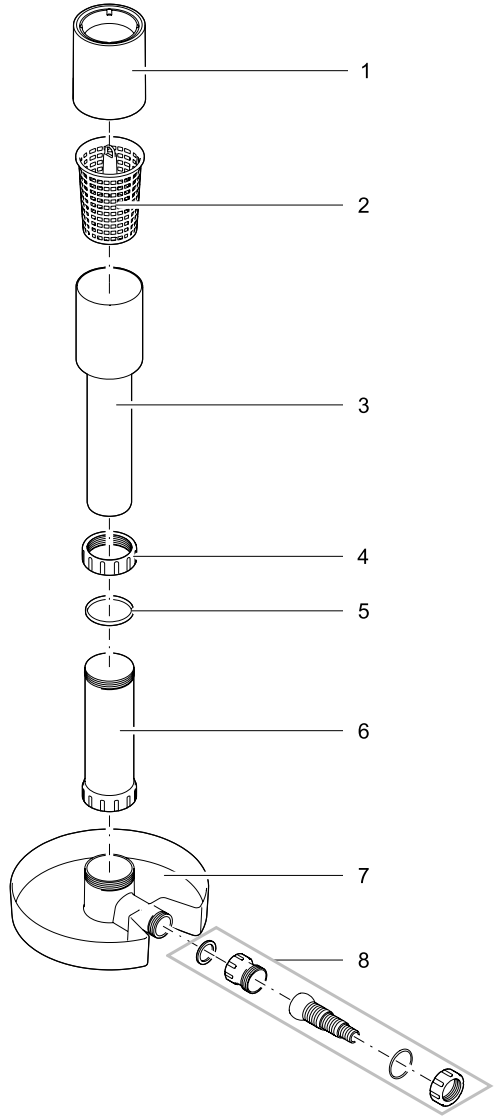
AquaSkim	x	y
20	60 mm	$\pm 50$ mm
40	75 mm	$\pm 60$ mm



ASM0004



Pos.	AquaSkim	
	20	40
1	21110	33284
2	21109	33285
3	21111	35263
4	35264	35264
5	26737	26737
6	35262	35262
7	27027	27027
8	35304	35304



ASM0005



OASE GmbH · [www.oase-livingwater.com](http://www.oase-livingwater.com)

Tecklenburger Straße 161 · 48477 Hörstel · Postfach 20 69 · 48469 Hörstel · Germany

21574/10H