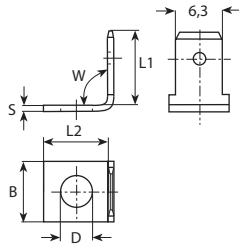


## Flachstecker schraubbar und schweisbar 6,3 mm Languettes vissable et soudable Tabs screwable and weldable

Werkstoff/Matière/Material  
 .2 = Bronze/bronze  
 .6 = Messing/laiton/brass  
 .8 = rostfreier Stahl/acier inox/stainless steel  
 .9 = Stahl/acier/steel

= Oberflächen/Surface/Surface-plating  
 Seite/page/page 5.011

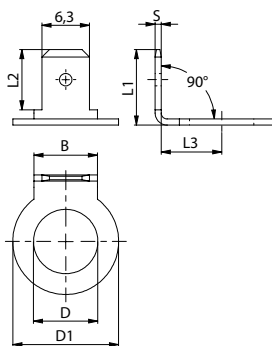


\* = ohne Bohrung / \* = sans trou / \* = without hole

øD mm	B mm	L1 mm	L2 mm	W mm	S mm	Artikelnummer Numéro d'article Part-No.
*	8	10.5	8.5	90°	0.8	3842.80
2.7	8	10.5	8.5	90°	0.8	3845.6
2.8	8	10.5	8.5	90	0.8	3845a9008.6
3.2	7.8	13.7	8.5	90°	0.8	3846a.6
	8	10.5	8.5	90°	0.8	3848.6
	8	10.2	8.2	90°	0.8	38481.6
3.7	8	10.5	8.5	90°	0.8	3853.6
	8	10.5	8.5	90°	0.8	3853.9
	8	10.5	8	90°	0.8	38531.2
4.3	8	10.5	8.5	90°	0.8	3858.6
	7.8	13.7	8.4	90°	0.8	3846v.6
4.2	8	10.5	8	90°	0.8	38581.2
5.3	8	10.5	8.5	90°	0.8	3863.6
	8	10.5	8.5	90°	0.8	3863.80
6.3	8	10.5	8.5	90°	0.8	3864c.6

Werkstoff/Matière/Material  
 .6 = Messing/laiton/brass  
 .8 = rostfreier Stahl/acier inox/stainless steel

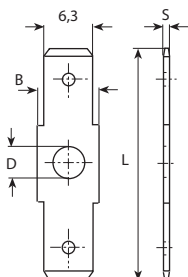
= Oberflächen/Surface/Surface-plating  
 Seite/page/page 5.011



øD mm	øD1 mm	B mm	L1 mm	L2 mm	L3 mm	S mm	Artikelnummer Numéro d'article Part-No.
5.3	12	8	11.3	8	7.1	0.8	3870m90.6
6.4	12	8	11.3	8	7.1	0.8	3870p90.6
8.4	12	8	11.3	8	7.1	0.8	3870q90.6
8.5	14	8.4	10	8	8	0.8	3870d.80

Werkstoff/Matière/Material  
 .6 = Messing/laiton/brass  
 .8 = rostfreier Stahl/acier inox/stainless steel

= Oberflächen/Surface/Surface-plating  
 Seite/page/page 5.011



\* = ohne Bohrung / \* = sans trou / \* = without hole

øD mm	B mm	L mm	S mm	Artikelnummer Numéro d'article Part-No.
*	8	30.5	0.8	3870b.6
	8	30.5	0.8	3870b.80
3.2	8	30.5	0.8	3871b.6
3.7	8	30.5	0.8	3873b.6
	8	30.5	0.8	3873b.80
4.2	7.3	22.9	0.8	3873d.6
	8	27	0.8	38750b.6