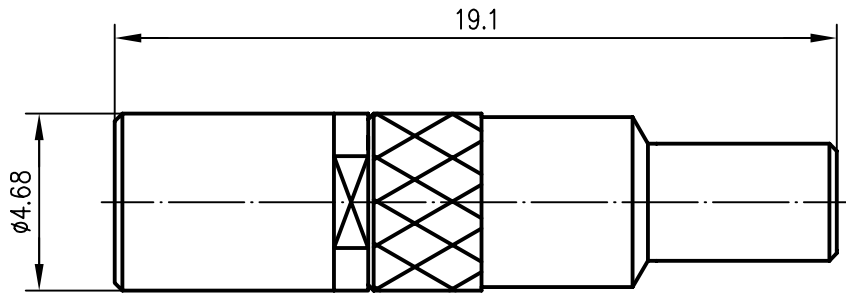


Anschlussmaße nach IEC 169-19 / mating face according to IEC 169-19




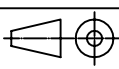
Außenleiter / outer conductor	CuBe2	Cu1Ni2Au0.8
Innenleiter / inner conductor	CuBe2	Cu1Ni2Au1.27
Isolierung / insulator	PTFE	
Crimpröhr / crimp ferrule	CuZn38Pb1.5	Cu2Ni5Au0.2
sonstige Metallteile / other metal parts	CuZn39Pb3	Cu2Ni5Au0.2

(a)	<table border="0"> <tr> <th>Frequenz / frequency</th> <th>typ. VSWR</th> <th>max. VSWR</th> </tr> <tr> <td>1 GHz</td> <td>1.08</td> <td>1.09</td> </tr> <tr> <td>2 GHz</td> <td>1.15</td> <td>1.22</td> </tr> <tr> <td>3 GHz</td> <td>1.45</td> <td>1.50</td> </tr> </table>	Frequenz / frequency	typ. VSWR	max. VSWR	1 GHz	1.08	1.09	2 GHz	1.15	1.22	3 GHz	1.45	1.50
	Frequenz / frequency	typ. VSWR	max. VSWR										
	1 GHz	1.08	1.09										
	2 GHz	1.15	1.22										
3 GHz	1.45	1.50											

Einfügedämpfung / insertion loss < 0.1 dB bis/up to 3 GHz

für Kabel / for cable G 3: KX 21A; RG-178B/U; RG-196A/U

Montage / mounting C2413

a	11311	08.03.00	HR	2000	Datum/date	Name/name	Werkstoff/ material
				gez./drawn	07.02.	HR	
				gepr./appr.	07.02.00	BJ	Oberfläche/ finish
				Norm/stand.			
				Maßstab/scale	Benennung/title		
				5:1	SSMB-Kabelbuchse SSMB Straight Jack		
				untol. Maße/ dim. without tolerances according to	Untert./doc.type	Zeichnungsnr./drawing no.	 Maße/dimensions: mm Original: DIN A4
					K	J01191A0001	
					Ersatz für/ replaces		