

**RA21S**

# Schnellinstallationsanleitung

11-2016 / v1.0

## **Edimax Technology Co., Ltd.**

No.3, Wu-Chuan 3rd Road, Wu-Gu, New Taipei City 24891, Taiwan

Email: [support@edimax.com.tw](mailto:support@edimax.com.tw)

---

## **Edimax Technology Europe B.V.**

Fijenhof 2, 5652 AE Eindhoven, The Netherlands

Email: [support@edimax.nl](mailto:support@edimax.nl)

---

## **Edimax Computer Company**

3350 Scott Blvd., Bldg.15 Santa Clara, CA 95054, USA

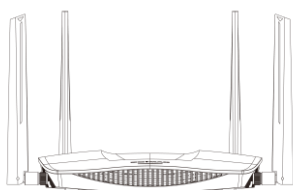
Live Tech Support: 1(800) 652-6776

Email: [support@edimax.com](mailto:support@edimax.com)

# Verpackungsinhalt

---

Bevor Sie dieses Produkt benutzen, überprüfen Sie bitte, ob irgendetwas in der Verpackung fehlt, und wenden Sie sich an Ihren Händler, um fehlende Teile zu melden.



**RA21S**



**CD-ROM**



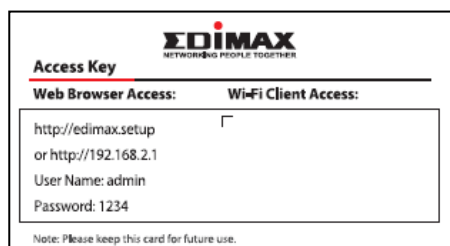
**Ethernetkabel**



**Schnellinstallationsanleitung**



**Netzadapter**

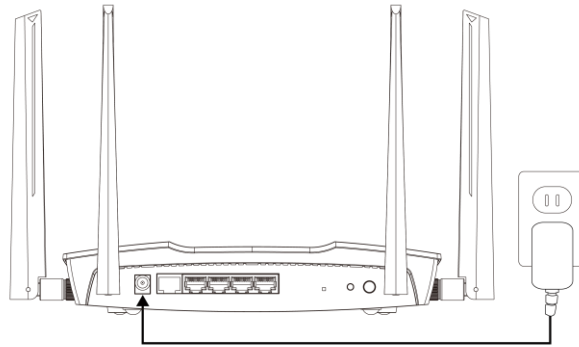


**Karte mit**

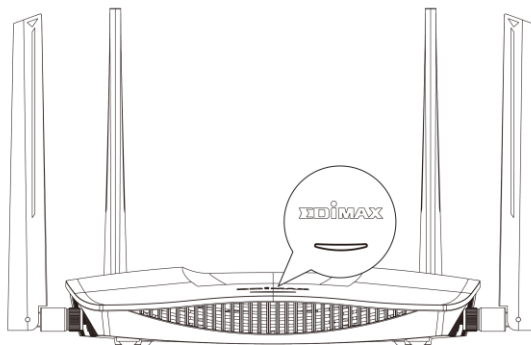
# Installation

---

1. Stecken Sie das Netzteil in den 12V DC-Anschluss des Geräts und das andere Ende in eine Steckdose.

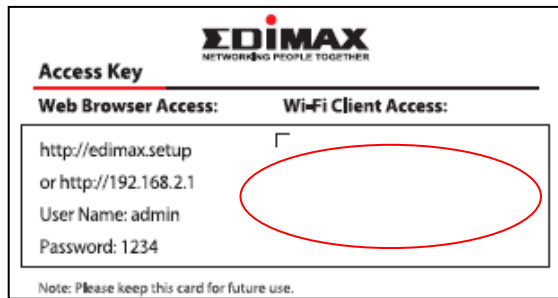


2. Überprüfen Sie, ob die Netz-LED an ist.



3. Verbinden Sie den Netzwerkanschluss Ihres RA21S über ein Ethernet-Kabel mit dem LAN-Port Ihres vorhandenen Routers.
4. Benutzen Sie ein Wi-Fi-Gerät (z.B. Computer, Tablet, Smartphone), um nach einem Wi-Fi-Netzwerk mit dem Namen "edimax.setup" oder "edimax.setup5G" zu suchen und sich damit zu verbinden.

5. Die Standard-WLAN-SSID und das Standardpasswort, die für die WLAN-Verbindung benötigt werden, sind auf der Access Key Card zu



finden.



**Für das Setup auf einem Smartphone oder Tablet sind iOS 4 oder Android 4 und höher erforderlich.**

6. Jetzt können Sie Ihr WLAN genießen. Wenn Sie den Betriebsmodus und die Konfiguration ändern möchten, fahren Sie mit dem Abschnitt „Browserbasierte Konfigurationsschnittstelle“ fort.

<b>WLAN-Router-Modus</b>	<i>Dieses Gerät stellt eine Verbindung zu Ihrem <b>Modem</b> her und aktiviert den 2,4 GHz bzw. 5 GHz Internetzugang (WLAN und Ethernet) für Ihre Netzwerkvorrichtungen.</i>
<b>Access Point-Modus</b>	<i>Das Gerät verbindet sich über Ethernetkabel mit einem vorhandenen <b>Router</b> und aktiviert den 2,4 GHz bzw. 5 GHz Internetzugang (WLAN und Ethernet) für Ihre Netzwerkvorrichtungen.</i>

# WLAN-Roaming

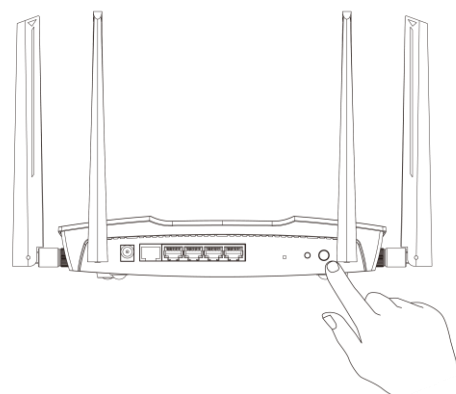
---

Ihr RA21S unterstützt das WLAN-Roaming. Das bedeutet, wenn Sie noch andere EDIMAX WLAN-Produkte haben, die Roaming unterstützen (z.B. Router, Access Point, Extender), dann stellen Ihre WLAN-Geräte (Smartphones, Tablets usw.) **automatisch** eine Verbindung zu dem besten verfügbaren WLAN-Signal her, während Sie sich zwischen den Geräten bewegen.

**Informationen zum Einrichten eines anderen EDIMAX WLAN Roaming Range Extenders finden Sie in der jeweils mitgelieferten Dokumentation.**

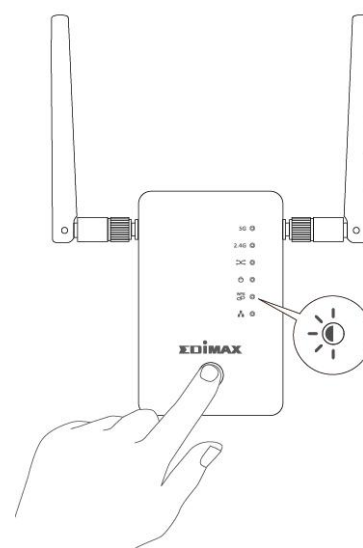
Zur Einrichtung von EDIMAX WLAN-Extendern mit Ihrem Router/AP können Sie wie nachfolgend erläutert einfach die WPS-Taste drücken. Stellen Sie sicher, dass sich beide Produkte in Reichweite voneinander befinden.

- 1.** Halten Sie die WPS-Taste an Ihrem Router/AP **3 Sekunden** lang gedrückt.



- 2.** Halten Sie **innerhalb von zwei Minuten** die WPS-Taste am neuen Extender, den Sie hinzufügen wollen, für **3 Sekunden** gedrückt. Die **grüne** WPS-LED am Extender sollte blinken, um anzuzeigen, dass WPS aktiv ist.

- 3.** Die Geräte stellen eine Verbindung her. Die **grüne** WPS-LED an dem Extender sollte 30 Sekunden lang an sein, um anzuzeigen, dass eine Verbindung erfolgreich ist. Ihr Extender ist jetzt für das automatische Roaming aktiviert.




**Weitere Informationen finden Sie in der Dokumentation zu Ihrem EDIMAX Roaming WLAN-Extender.**

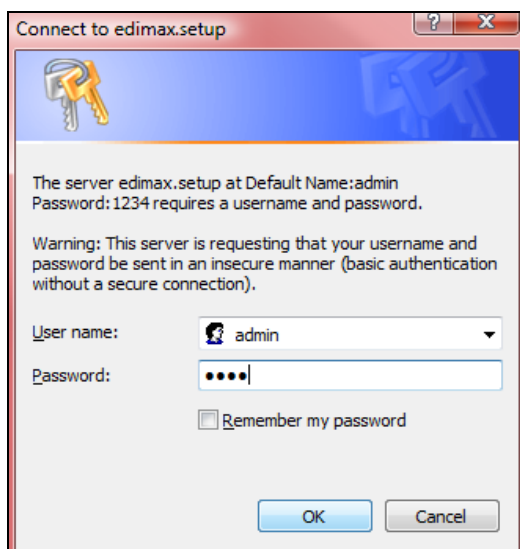
# Browserbasierte Konfigurationsschnittstelle

Nach dem Setup können Sie sich bei ***http://edimax.setup*** anmelden und Einstellungen konfigurieren oder ändern, zum Beispiel WLAN-Einstellungen. Geben Sie ***http://edimax.setup*** in die URL-Zeile eines Webbrowsers an einem Netzwerkgerät ein, das mit dem RA21S verbunden ist.

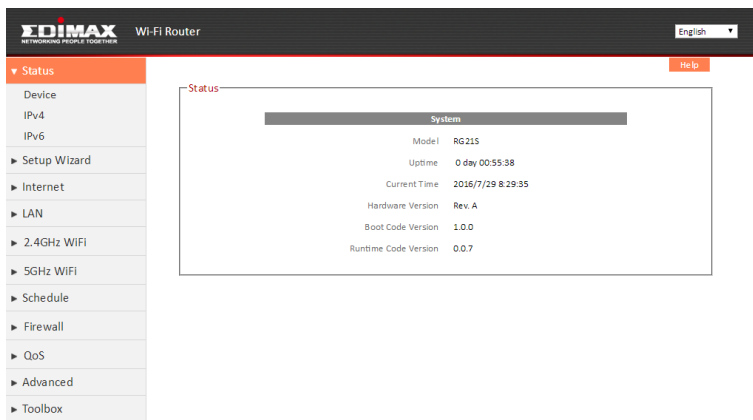


 **Falls Sie keinen Zugriff auf edimax.setup haben, schließen Sie den RA21S mit einem Ethernetkabel an einen Computer an und versuchen Sie es erneut.**

Der Standardbenutzername ist **“admin”** und das Standardpasswort lautet **“1234”**.



Verwenden Sie zum Navigieren das Menü herunter links. Weitere Informationen finden Sie im Benutzerhandbuch.



## ***LED-Status***

---

<b>LED</b>	<b>Farbe</b>	<b>Status</b>	<b>Beschreibung</b>
Power	Rot	An	Internetverbindung hergestellt.
		Aus	Das Gerät ist aus.
		Schnell blinkend	WPS ist aktiv.
		Langsam blinkend	Keine Internetverbindung.

# FAQs

---

## 1. Wie richte ich einen VPN-Server ein? (nur Router-Modus)

- a. Ein VPN-Server kann für den Remote-Zugriff auf Ihr Netzwerk sowie für mehr Sicherheit & Datenschutz verwendet werden. Melden Sie sich bei **<http://edimax.setup>** an und gehen Sie zu **Internet** → **VPN**, um den Server einzurichten, und beachten Sie das Benutzerhandbuch für weitere Anleitungen. Für den VPN-Fernzugriff ist auf Ihrem Netzwerkgerät ein VPN-Client wie OpenVPN erforderlich.



## 2. Ich habe keinen Zugriff auf das Internet.

- a. Stellen Sie sicher, dass alle Kabel ordnungsgemäß angeschlossen sind. Versuchen Sie ein anderes Ethernetkabel.
- b. Prüfen Sie, ob Sie Zugriff auf die webbasierte Konfigurationsschnittstelle haben. Falls nicht, überzeugen Sie sich bitte davon, dass Ihr Computer für die Verwendung einer dynamischen IP-Adresse eingestellt ist. Entnehmen Sie die Anleitung aus dem Benutzerhandbuch, falls Sie nicht sicher sind, wie Sie verfahren müssen.
- c. Melden Sie sich auf der webbasierten Konfigurationsschnittstelle an und gehen Sie auf **Internet > WAN Setup** und prüfen Sie, ob die Anschlussart korrekt ist. Falls Sie sich nicht sicher sind, welche Internetanschlussart Sie haben, kontaktieren Sie bitte Ihren Internet Service Provider (ISP).
- d. Schließen Sie Ihren Computer direkt an Ihr Modem an und prüfen Sie, ob Sie Internetzugriff haben. Falls nicht, wenden Sie sich bitte an Ihren Internet Service Provider, um Hilfe zu erhalten.

## 3. Ich kann die webbasierte Konfigurationsschnittstelle nicht öffnen.

- a. Bitte stellen Sie sicher, dass Ihr Computer auf die Verwendung einer dynamischen IP-Adresse eingestellt ist. Entnehmen Sie die Anleitung aus dem Benutzerhandbuch, falls Sie nicht sicher sind, wie Sie verfahren müssen.

## 4. Wie setze ich mein Gerät auf die Werksstandardeinstellungen zurück?

- a. Um das Gerät auf die Werksstandardeinstellungen zurückzusetzen, halten Sie die WPS/Reset-Taste mehr als 10 Sekunden lang gedrückt, bis die Internet-LED zu blinken beginnt. Bitte warten Sie ein paar Minuten, bis das Produkt neustartet. Wenn das Gerät neustartet, werden alle Einstellungen zurückgesetzt.



Standardeinstellungen werden auf dem Produktetikett auf der Rückseite des Geräts angezeigt.

<b>AP Login</b>	Geben Sie diese URL in einen Webbrowser ein, um die erweiterten Einstellungen zu konfigurieren. Sie müssen über Wi-Fi oder Ethernetkabel mit dem Gerät verbunden sein.
<b>Benutzername/Passwort</b>	Dies ist der Standardbenutzername und das Passwort, um auf die browserbasierte Konfigurationsschnittstelle zuzugreifen, wenn Sie auf die "AP Login" URL (oben) gehen.
<b>Name des WLAN-Netzwerks</b>	Dies ist der Standardname des WLAN-Netzwerks für das Gerät. Suchen Sie nach diesem Namen (SSID) und verbinden Sie sich mit ihm, um Zugriff auf die "AP Login" URL (oben) zu haben.
<b>MAC</b>	Jedes Gerät verfügt über eine eindeutige MAC-Adresse und wird zur Identifikation innerhalb eines Netzwerks verwendet. Hier wird die eindeutige MAC-Adresse Ihres Geräts angezeigt.
<b>PIN CODE</b>	Hierbei handelt es sich um den PIN Code Ihres Geräts für das Wi-Fi geschützte Setup (WPS) für jede Drahtlosfrequenz.

## 5. Ich habe mein Passwort vergessen.

- a. Setzen Sie den Router auf seine Werksstandardeinstellungen zurück und verwenden Sie den Standardbenutzernamen **admin** und das Standardpasswort **1234**. Die Standardeinstellungen werden auf dem Produktetikett auf der Rückseite des Geräts angezeigt, wie oben dargestellt.

## 6. Funktionieren die blauen WAN- und die schwarzen LAN-Anschlüsse gleich, wenn das Gerät in unterschiedlichen Modi ist?

Nein, die WAN und LAN Anschlüsse haben in Abhängigkeit vom Betriebsmodus des Geräts leicht unterschiedliche Funktionen.

- a. Im **Wi-Fi Router** Modus ist der **WAN Port** für einen direkten Anschluss an Ihr xDSL Modem. Die **LAN Ports** sind für drahtgebundene Netzwerk-Clients.
- b. Im **Access Point** Modus ist der **WAN Port** nicht funktional. Schließen Sie Ihren

vorhandenen Router an den **LAN Port** des Geräts an und die anderen **LAN Ports** können drahtgebundene Netzwerk-Clients verbinden.

## Federal Communication Commission Interference Statement

This equipment has been tested and found to comply with the limits for a Class B digital device, pursuant to Part 15 of FCC Rules. These limits are designed to provide reasonable protection against harmful interference in a residential installation. This equipment generates, uses, and can radiate radio frequency energy and, if not installed and used in accordance with the instructions, may cause harmful interference to radio communications. However, there is no guarantee that interference will not occur in a particular installation. If this equipment does cause harmful interference to radio or television reception, which can be determined by turning the equipment off and on, the user is encouraged to try to correct the interference by one or more of the following measures:

1. Reorient or relocate the receiving antenna.
2. Increase the separation between the equipment and receiver.
3. Connect the equipment into an outlet on a circuit different from that to which the receiver is connected.
4. Consult the dealer or an experienced radio technician for help.

### FCC Caution

This device and its antenna must not be co-located or operating in conjunction with any other antenna or transmitter. This device complies with Part 15 of the FCC Rules. Operation is subject to the following two conditions: (1) this device may not cause harmful interference, and (2) this device must accept any interference received, including interference that may cause undesired operation. Any changes or modifications not expressly approved by the party responsible for compliance could void the authority to operate equipment.

### Federal Communications Commission (FCC) Radiation Exposure Statement

This equipment complies with FCC radiation exposure set forth for an uncontrolled environment. In order to avoid the possibility of exceeding the FCC radio frequency exposure limits, human proximity to the antenna shall not be less than 2.5cm (1 inch) during normal operation.

### Federal Communications Commission (FCC) RF Exposure Requirements

This EUT is compliance with SAR for general population/uncontrolled exposure limits in ANSI/IEEE C95.1-1999 and had been tested in accordance with the measurement methods and procedures specified in OET Bulletin 65 Supplement C. The equipment version marketed in US is restricted to usage of the channels 1-11 only. This equipment is restricted to *indoor* use when operated in the 5.15 to 5.25 GHz frequency range.

## R&TTE Compliance Statement

This equipment complies with all the requirements of DIRECTIVE 1999/5/EC OF THE EUROPEAN PARLIAMENT AND THE COUNCIL of March 9, 1999 on radio equipment and telecommunication terminal equipment and the mutual recognition of their conformity (R&TTE). The R&TTE Directive repeals and replaces in the directive 98/13/EEC (Telecommunications Terminal Equipment and Satellite Earth Station Equipment) As of April 8, 2000.

### Safety

This equipment is designed with the utmost care for the safety of those who install and use it. However, special attention must be paid to the dangers of electric shock and static electricity when working with electrical equipment. All guidelines of this and of the computer manufacture must therefore be allowed at all times to ensure the safe use of the equipment.

### EU Countries Intended for Use

The ETSI version of this device is intended for home and office use in Austria, Belgium, Bulgaria, Cyprus, Czech, Denmark, Estonia, Finland, France, Germany, Greece, Hungary, Ireland, Italy, Latvia, Lithuania, Luxembourg, Malta, Netherlands, Poland, Portugal, Romania, Slovakia, Slovenia, Spain, Sweden, Turkey, and United Kingdom. The ETSI version of this device is also authorized for use in EFTA member states: Iceland, Liechtenstein, Norway, and Switzerland.

### EU Countries Not Intended for Use

None

## EU Declaration of Conformity

- English:** This equipment is in compliance with the essential requirements and other relevant provisions of Directive 1999/5/EC, 2009/125/EC.
- Français:** Cet équipement est conforme aux exigences essentielles et autres dispositions de la directive 1999/5/CE, 2009/125/CE.
- Čeština:** Toto zařízení je v souladu se základními požadavky a ostatními příslušnými ustanoveními směrnic 1999/5/ES, 2009/125/ES.
- Polski:** Urządzenie jest zgodne z ogólnymi wymaganiami oraz szczególnymi warunkami określonymi Dyrektywą UE 1999/5/EC, 2009/125/EC.
- Română:** Acest echipament este în conformitate cu cerințele esențiale și alte prevederi relevante ale Directivei 1999/5/CE, 2009/125/CE.
- Русский:** Это оборудование соответствует основным требованиям и положениям Директивы 1999/5/EC, 2009/125/EC.
- Magyar:** Ez a berendezés megfelel az alapvető követelményeknek és más vonatkozó irányelveknek (1999/5/EK, 2009/125/EC).
- Türkçe:** Bu cihaz 1999/5/EC, 2009/125/EC direktifleri zorunlu istekler ve diğer hükümlerle ile uyumludur.
- Українська:** Обладнання відповідає вимогам і умовам директиви 1999/5/EC, 2009/125/EC.
- Slovenčina:** Toto zariadenie spĺňa základné požiadavky a ďalšie príslušné ustanovenia smerníc 1999/5/ES, 2009/125/ES.
- Deutsch:** Dieses Gerät erfüllt die Voraussetzungen gemäß den Richtlinien 1999/5/EC, 2009/125/EC.
- Español:** El presente equipo cumple los requisitos esenciales de la Directiva 1999/5/EC, 2009/125/EC.
- Italiano:** Questo apparecchio è conforme ai requisiti essenziali e alle altre disposizioni applicabili della Direttiva 1999/5/CE, 2009/125/CE.
- Nederlands:** Dit apparaat voldoet aan de essentiële eisen en andere van toepassing zijnde bepalingen van richtlijn 1999/5/EC, 2009/125/EC.
- Português:** Este equipamento cumpre os requisitos essenciais da Directiva 1999/5/EC, 2009/125/EC.
- Norsk:** Dette utstyret er i samsvar med de viktigste kravene og andre relevante regler i Direktiv 1999/5/EC, 2009/125/EC.
- Svenska:** Denna utrustning är i överensstämmelse med de väsentliga kraven och övriga relevanta bestämmelser i direktiv 1999/5/EG, 2009/125/EG.
- Dansk:** Dette udstyr er i overensstemmelse med de væsentligste krav og andre relevante forordninger i direktiv 1999/5/EC, 2009/125/EC.
- Suomi:** Tämä laite täyttää direktiivien 1999/5/EY, 2009/125/EY oleelliset vaatimukset ja muut asiaankuuluvat määräykset.

FOR USE IN

AT	BE	CY	CZ	DK	EE	FI	FR	RJ				
DE	GR	HU	IE	IT	LV	LT	LU	MT	NL	PL	PT	UA
SK	SI	ES	SE	GB	IS	LI	NO	CH	BG	RO	TR	



### WEEE Directive & Product Disposal



At the end of its serviceable life, this product should not be treated as household or general waste. It should be handed over to the applicable collection point for the recycling of electrical and electronic equipment, or returned to the supplier for disposal.

## Declaration of Conformity

We, Edimax Technology Co., Ltd., declare under our sole responsibility, that the equipment described below complies with the requirements of the European R&TTE directives 1999/5/EC, directive 2011/65/EC (RoHS) and directive 2009/125/EC (ErP).

**Equipment: Home Wi-Fi Roaming Access Point**

**Model No.: RA21S**

The following European standards for essential requirements have been followed:

### Directives 1999/5/EC

Spectrum : ETSI EN 300 328 V1.9.1 (2015);  
ETSI EN 301 893 V1.8.1 (2015)  
EMC : EN 301 489-1 V1.9.2 (2011-09);  
EN 301 489-17 V2.2.1 (2012-09);  
Safety (LVD) : IEC 60950-1:2005 (2<sup>nd</sup> Edition)+A1:2009+A2:2013  
EN 60950-1:2006+A11:2009+A1:2010+A12:2011+A2:2013

### Recommendation 99/519/EC

EMF : EN 62311: 2008

### Directives 2006/95/EC

Safety (LVD) : IEC 60950-1:2005 (2<sup>nd</sup> Edition)+A1:2009+A2:2013  
EN 60950-1:2006+A11:2009+A1:2010+A12:2011+A2:2013

Edimax Technology Co., Ltd.  
No. 3, Wu Chuan 3<sup>rd</sup> Road,  
Wu-Ku Industrial Park,  
New Taipei City, Taiwan



Date of Signature: Nov., 2016

Signature: \_\_\_\_\_

Printed Name: \_\_\_\_\_

Albert Chang

Title: \_\_\_\_\_

Director

Edimax Technology Co., Ltd.

## Notice According to GNU General Public License Version 2

This product includes software that is subject to the GNU General Public License version 2. The program is free software and distributed without any warranty of the author. We offer, valid for at least three years, to give you, for a charge no more than the costs of physically performing source distribution, a complete machine-readable copy of the corresponding source code.

Das Produkt beinhaltet Software, die den Bedingungen der GNU/GPL-Version 2 unterliegt. Das Programm ist eine sog. „Free Software“, der Autor stellt das Programm ohne irgendeine Gewährleistungen zur Verfügung. Wir bieten Ihnen für einen Zeitraum von drei Jahren an, eine vollständige maschinenlesbare Kopie des Quelltextes der Programme zur Verfügung zu stellen – zu nicht höheren Kosten als denen, die durch den physikalischen Kopiervorgang anfallen.

### GNU GENERAL PUBLIC LICENSE

Version 2, June 1991

Copyright (C) 1989, 1991 Free Software Foundation, Inc. 51 Franklin Street, Fifth Floor, Boston, MA 02110-1301, USA  
Everyone is permitted to copy and distribute verbatim copies of this license document, but changing it is not allowed.

#### Preamble

The licenses for most software are designed to take away your freedom to share and change it. By contrast, the GNU General Public License is intended to guarantee your freedom to share and change free software--to make sure the software is free for all its users. This General Public License applies to most of the Free Software Foundation's software and to any other program whose authors commit to using it. (Some other Free Software Foundation software is covered by the GNU Lesser General Public License instead.) You can apply it to your programs, too.

When we speak of free software, we are referring to freedom, not price. Our General Public Licenses are designed to make sure that you have the freedom to distribute copies of free software (and charge for this service if you wish), that you receive source code or can get it if you want it, that you can change the software or use pieces of it in new free programs; and that you know you can do these things.

To protect your rights, we need to make restrictions that forbid anyone to deny you these rights or to ask you to surrender the rights. These restrictions translate to certain responsibilities for you if you distribute copies of the software, or if you modify it.

For example, if you distribute copies of such a program, whether gratis or for a fee, you must give the recipients all the rights that you have. You must make sure that they, too, receive or can get the source code. And you must show them these terms so they know their rights.

We protect your rights with two steps: (1) copyright the software, and (2) offer you this license which gives you legal permission to copy, distribute and/or modify the software.

Also, for each author's protection and ours, we want to make certain that everyone understands that there is no warranty for this free software. If the software is modified by someone else and passed on, we want its recipients to know that what they have is not the original, so that any problems introduced by others will not reflect on the original authors' reputations.

Finally, any free program is threatened constantly by software patents. We wish to avoid the danger that redistributors of a free program will individually obtain patent licenses, in effect making the program proprietary. To prevent this, we have made it clear that any patent must be licensed for everyone's free use or not licensed at all.

The precise terms and conditions for copying, distribution and modification follow.

#### TERMS AND CONDITIONS FOR COPYING, DISTRIBUTION AND MODIFICATION

0. This License applies to any program or other work which contains a notice placed by the copyright holder saying it may be distributed under the terms of this General Public License. The "Program", below, refers to any such program or work, and a "work based on the Program" means either the Program or any derivative work under copyright law: that is to say, a work containing the Program or a portion of it, either verbatim or with modifications and/or translated into another language. (Hereinafter, translation is included without limitation in the term "modification".) Each licensee is addressed as "you".

Activities other than copying, distribution and modification are not covered by this License; they are outside its scope. The act of running the Program is not restricted, and the output from the Program is covered only if its contents constitute a work based on the Program (independent of having been made by running the Program). Whether that is true depends on what the Program does.

1. You may copy and distribute verbatim copies of the Program's source code as you receive it, in any medium, provided that you conspicuously and appropriately publish on each copy an appropriate copyright notice and disclaimer of warranty; keep

intact all the notices that refer to this License and to the absence of any warranty; and give any other recipients of the Program a copy of this License along with the Program.

You may charge a fee for the physical act of transferring a copy, and you may at your option offer warranty protection in exchange for a fee.

2. You may modify your copy or copies of the Program or any portion of it, thus forming a work based on the Program, and copy and distribute such modifications or work under the terms of Section 1 above, provided that you also meet all of these conditions:

- a) You must cause the modified files to carry prominent notices stating that you changed the files and the date of any change.
- b) You must cause any work that you distribute or publish, that in whole or in part contains or is derived from the Program or any part thereof, to be licensed as a whole at no charge to all third parties under the terms of this License.
- c) If the modified program normally reads commands interactively when run, you must cause it, when started running for such interactive use in the most ordinary way, to print or display an announcement including an appropriate copyright notice and a notice that there is no warranty (or else, saying that you provide a warranty) and that users may redistribute the program under these conditions, and telling the user how to view a copy of this License. (Exception: if the Program itself is interactive but does not normally print such an announcement, your work based on the Program is not required to print an announcement.)

These requirements apply to the modified work as a whole. If identifiable sections of that work are not derived from the Program, and can be reasonably considered independent and separate works in themselves, then this License, and its terms, do not apply to those sections when you distribute them as separate works. But when you distribute the same sections as part of a whole which is a work based on the Program, the distribution of the whole must be on the terms of this License, whose permissions for other licensees extend to the entire whole, and thus to each and every part regardless of who wrote it.

Thus, it is not the intent of this section to claim rights or contest your rights to work written entirely by you; rather, the intent is to exercise the right to control the distribution of derivative or collective works based on the Program.

In addition, mere aggregation of another work not based on the Program with the Program (or with a work based on the Program) on a volume of a storage or distribution medium does not bring the other work under the scope of this License.

3. You may copy and distribute the Program (or a work based on it, under Section 2) in object code or executable form under the terms of Sections 1 and 2 above provided that you also do one of the following:

- a) Accompany it with the complete corresponding machine-readable source code, which must be distributed under the terms of Sections 1 and 2 above on a medium customarily used for software interchange; or,
- b) Accompany it with a written offer, valid for at least three years, to give any third party, for a charge no more than your cost of physically performing source distribution, a complete machine-readable copy of the corresponding source code, to be distributed under the terms of Sections 1 and 2 above on a medium customarily used for software interchange; or,
- c) Accompany it with the information you received as to the offer to distribute corresponding source code. (This alternative is allowed only for noncommercial distribution and only if you received the program in object code or executable form with such an offer, in accord with Subsection b above.)

The source code for a work means the preferred form of the work for making modifications to it. For an executable work, complete source code means all the source code for all modules it contains, plus any associated interface definition files, plus the scripts used to control compilation and installation of the executable. However, as a special exception, the source code distributed need not include anything that is normally distributed (in either source or binary form) with the major components (compiler, kernel, and so on) of the operating system on which the executable runs, unless that component itself accompanies the executable.

If distribution of executable or object code is made by offering access to copy from a designated place, then offering equivalent access to copy the source code from the same place counts as distribution of the source code, even though third parties are not compelled to copy the source along with the object code.

4. You may not copy, modify, sublicense, or distribute the Program except as expressly provided under this License. Any attempt otherwise to copy, modify, sublicense or distribute the Program is void, and will automatically terminate your rights under this License. However, parties who have received copies, or rights, from you under this License will not have their licenses terminated so long as such parties remain in full compliance.

5. You are not required to accept this License, since you have not signed it. However, nothing else grants you permission to modify or distribute the Program or its derivative works. These actions are prohibited by law if you do not accept this License. Therefore, by modifying or distributing the Program (or any work based on the Program), you indicate your acceptance of this License to do so, and all its terms and conditions for copying, distributing or modifying the Program or works based on it.

6. Each time you redistribute the Program (or any work based on the Program), the recipient automatically receives a license from the original licensor to copy, distribute or modify the Program subject to these terms and conditions. You may not impose any further restrictions on the recipients' exercise of the rights granted herein. You are not responsible for enforcing compliance by third parties to this License.

7. If, as a consequence of a court judgment or allegation of patent infringement or for any other reason (not limited to patent issues), conditions are imposed on you (whether by court order, agreement or otherwise) that contradict the conditions of this License, they do not excuse you from the conditions of this License. If you cannot distribute so as to satisfy simultaneously your obligations under this License and any other pertinent obligations, then as a consequence you may not distribute the Program at all. For example, if a patent license would not permit royalty-free redistribution of the Program by all those who receive copies directly or indirectly through you, then the only way you could satisfy both it and this License would be to refrain entirely from distribution of the Program.

If any portion of this section is held invalid or unenforceable under any particular circumstance, the balance of the section is intended to apply and the section as a whole is intended to apply in other circumstances.

It is not the purpose of this section to induce you to infringe any patents or other property right claims or to contest validity of any such claims; this section has the sole purpose of protecting the integrity of the free software distribution system, which is implemented by public license practices. Many people have made generous contributions to the wide range of software distributed through that system in reliance on consistent application of that system; it is up to the author/donor to decide if he or she is willing to distribute software through any other system and a licensee cannot impose that choice.

This section is intended to make thoroughly clear what is believed to be a consequence of the rest of this License.

8. If the distribution and/or use of the Program is restricted in certain countries either by patents or by copyrighted interfaces, the original copyright holder who places the Program under this License may add an explicit geographical distribution limitation excluding those countries, so that distribution is permitted only in or among countries not thus excluded. In such case, this License incorporates the limitation as if written in the body of this License.

9. The Free Software Foundation may publish revised and/or new versions of the General Public License from time to time. Such new versions will be similar in spirit to the present version, but may differ in detail to address new problems or concerns.

Each version is given a distinguishing version number. If the Program specifies a version number of this License which applies to it and "any later version", you have the option of following the terms and conditions either of that version or of any later version published by the Free Software Foundation. If the Program does not specify a version number of this License, you may choose any version ever published by the Free Software Foundation.

10. If you wish to incorporate parts of the Program into other free programs whose distribution conditions are different, write to the author to ask for permission. For software which is copyrighted by the Free Software Foundation, write to the Free Software Foundation; we sometimes make exceptions for this. Our decision will be guided by the two goals of preserving the free status of all derivatives of our free software and of promoting the sharing and reuse of software generally.

#### **NO WARRANTY**

11. BECAUSE THE PROGRAM IS LICENSED FREE OF CHARGE, THERE IS NO WARRANTY FOR THE PROGRAM, TO THE EXTENT PERMITTED BY APPLICABLE LAW. EXCEPT WHEN OTHERWISE STATED IN WRITING THE COPYRIGHT HOLDERS AND/OR OTHER PARTIES PROVIDE THE PROGRAM "AS IS" WITHOUT WARRANTY OF ANY KIND, EITHER EXPRESSED OR IMPLIED, INCLUDING, BUT NOT LIMITED TO, THE IMPLIED WARRANTIES OF MERCHANTABILITY AND FITNESS FOR A PARTICULAR PURPOSE. THE ENTIRE RISK AS TO THE QUALITY AND PERFORMANCE OF THE PROGRAM IS WITH YOU. SHOULD THE PROGRAM PROVE DEFECTIVE, YOU ASSUME THE COST OF ALL NECESSARY SERVICING, REPAIR OR CORRECTION.

12. IN NO EVENT UNLESS REQUIRED BY APPLICABLE LAW OR AGREED TO IN WRITING WILL ANY COPYRIGHT HOLDER, OR ANY OTHER PARTY WHO MAY MODIFY AND/OR REDISTRIBUTE THE PROGRAM AS PERMITTED ABOVE, BE LIABLE TO YOU FOR DAMAGES, INCLUDING ANY GENERAL, SPECIAL, INCIDENTAL OR CONSEQUENTIAL DAMAGES ARISING OUT OF THE USE OR INABILITY TO USE THE PROGRAM (INCLUDING BUT NOT LIMITED TO LOSS OF DATA OR DATA BEING RENDERED INACCURATE OR LOSSES SUSTAINED BY YOU OR THIRD PARTIES OR A FAILURE OF THE PROGRAM TO OPERATE WITH ANY OTHER PROGRAMS), EVEN IF SUCH HOLDER OR OTHER PARTY HAS BEEN ADVISED OF THE POSSIBILITY OF SUCH DAMAGES.





**ΣDIMAX**  
NETWORKING PEOPLE TOGETHER