

## Steckhülsen 4,8 mm

### Clips femelles Receptacles

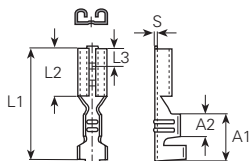
DIN 46247/2

\* ausgenommen  
\* excepté  
\* excepted

Werkstoff/Matière/Material  
.6 = Messing/laiton/brass

= Oberflächen/Surface/Surface-plating  
Seite/page/page 5.011

Strombelastbarkeit / Intensité admissible / Current carrying capacity:  
0.5 – 1.0 mm<sup>2</sup> / 10A max.  
1.5 – 2.5 mm<sup>2</sup> / 15A max.



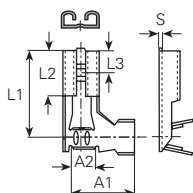
mm <sup>2</sup>	AWG	Größe Grandeur Size	Artikelnummer Numéro d'article Part-No.	DIN	L1 mm	L2 mm	L3 mm	A1 mm	A2 mm	S mm	Werkzeuge Outils Toolings
0.5-1	20-18	4.8 x 0.5	3800.6	*	15.5	6.3	3.8	6.7	3.3	0.35	3975b,
	20-18	4.8 x 0.8	3801.6	46247/T2	16	6	3.8	6.3	3.5	0.35	3984a, 3988n
1.5-2.5	16-14	4.8 x 0.5	3803.6	*	15.5	6.3	3.8	6.7	3.3	0.35	3975c,
	16-14	4.8 x 0.8	3805.6	46247/T2	15.6	6	3.8	6	3.4	0.35	3983p.4, 3984a, 3988n

4084.4

4084.4

Werkstoff/Matière/Material  
.6 = Messing/laiton/brass

= Oberflächen/Surface/Surface-plating  
Seite/page/page 5.011



mm <sup>2</sup>	AWG	Größe Grandeur Size	Artikelnummer Numéro d'article Part-No.	DIN	L1 mm	L2 mm	L3 mm	A1 mm	A2 mm	S mm	Werkzeuge Outils Toolings
0.5-1	20-18	4.8 x 0.5	380205.6	*	11.3	6	3.8	8.3	3	0.35	
	20-18	4.8 x 0.8	380208.6	*	11.3	6	3.8	8.3	3	0.35	3983d

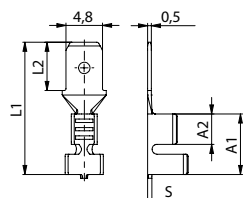
Werkstoff/Matière/Material  
.6 = Messing/laiton/brass

= Oberflächen/Surface/Surface-plating  
Seite/page/page 5.011

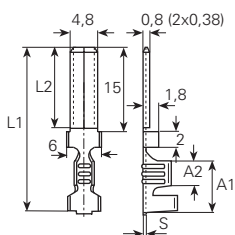
### Flachstecker

### Languettes plates

### tabs



mm <sup>2</sup>	AWG	Größe Grandeur Size	Artikelnummer Numéro d'article Part-No.	DIN	L1 mm	L2 mm	L3 mm	A1 mm	A2 mm	S mm	Werkzeuge Outils Toolings
0.75-2	20-15	4.8 x 0.5	3807.6	*	17.5	6.4		8	4	0.5	3975f



mm <sup>2</sup>	AWG	Größe Grandeur Size	Artikelnummer Numéro d'article Part-No.	DIN	L1 mm	L2 mm	L3 mm	A1 mm	A2 mm	S mm	Werkzeuge Outils Toolings
1.5-2.5	16-14	4.8 x 0.8	3808.6	*	26.5	14.5		6.5	3.5	0.38	3975c, 3983p.4, 3984a, 3988n