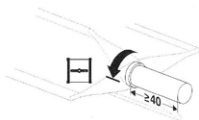


Zuluftklappe mit Servomotor

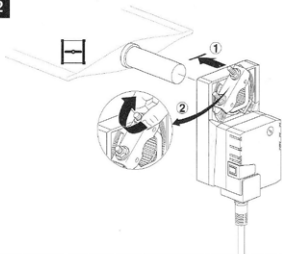
ELEKTROTECHNIK
SCHABUS **ES**

1

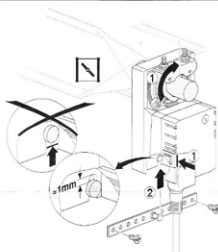


8 ... 26.7	≥ 8	≤ 26.7

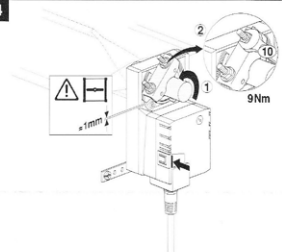
2



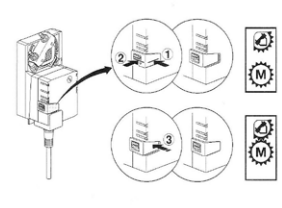
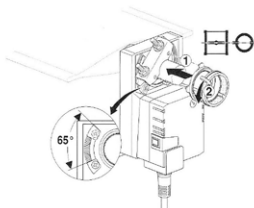
3



4

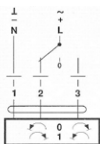
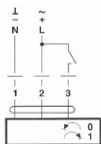


5

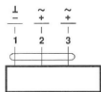


Elektrotechnik Schabus GmbH & Co. KG
 Bayerbacher Str. 150
 D-83071 Stephanskirchen
 Germany

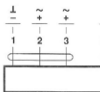
TEL +49 (0) 80 36 / 67 49 79 - 0
 FAX +49 (0) 80 36 / 67 49 79 - 79
 MAIL info@elektrotechnik-schabus.de
 WEB www.elektrotechnik-schabus.de



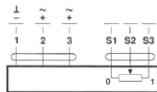
AC 24 V / DC 24 V
DC 48 ... 110 V
(NM72A..)



NM24A..
NM72A..

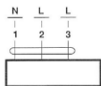


NM24A-S..

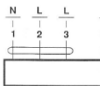


NM24AP5..

AC 100 ... 240 V



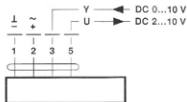
NM230A..



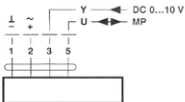
NM230A-S..



AC 24 V / DC 24 V

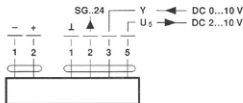


NM24A-SR..
NM24A-MF..



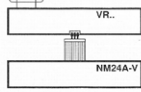
NM24A-MP..

DC 48 ... 110 V
(NM72A-SR..)



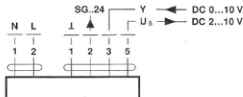
NM72A-SR..

AC 24 V / DC 24 V
(NM24A-V / VR..)



NM24A-V / VR..

AC 100 ... 240 V



NM230ASR..