




# H2R NOVA (NW/CW LED)

RECHARGEABLE VERSATILE LED ILLUMINATION TOOL

MAX OUTPUT	MAX RUNTIME	MAX THROW
		
2300 lumens	45 days	153 meters

		
TIR lens	Magnetic tailcap	Rechargeable



# H2R NOVA

RECHARGEABLE VERSATILE LED ILLUMINATION TOOL



**MARKET APPLICATIONS:**  
outdoors, household

**UPC:**  
CW 6926540907309  
NW 6926540907392

## DESCRIPTION

The H2R Nova (CW/NW LED) is an LED illumination tool powered by a single 18650 battery with a maximum output of 2300 lumens. Using a highly efficient CREE XHP50 LED and TIR bead lens, the H2R delivers a balanced beam perfect for close range illumination. This light is a multi-use illumination tool that can be used as a headlamp with the included head strap that features a magnetic mount that wraps around the light for a secure and firm hold. When detached from the mount it can also turn into a hand held light using the provided pocket clip. The H2R battery can be charged directly through the tail cap of the light using OLIGHT's signature magnetic charging cable. The high output and versatility of the H2R Nova make it a powerful and vital tool for activities in the dark.



Light wrapped around by the silicone mount, and is easily detachable through a single hand



Rechargeable via the included magnetic charging cable using laptops, power banks, etc.



Also rechargeable via the OLIGHT charging dock (optional accessory)

# H2R NOVA

RECHARGEABLE VERSATILE LED ILLUMINATION TOOL



## MULTIPLE APPLICATIONS:

Handheld



Attach to a backpack strap



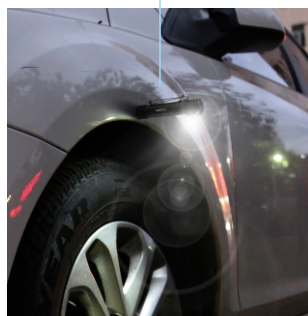
Headlamp



Attach to a pocket



Attach to a belt



Magnetically attach to a car

# H2R NOVA






RECHARGEABLE VERSATILE LED ILLUMINATION TOOL



## FEATURES

- Maximum output of 2,300 lumens making the H2R the brightest single 18650 battery light.
- Multiple use options including an easily detachable head strap mount turning it into a hand held light.
- Rechargeable through OLIGHT's signature magnetic charging system.
- Low battery warning. The light will blink once per minute when the battery is running low, and continuously blink twice when it is running out.
- Slightly angled surface for the switch to locate it easily in the dark and promote more natural operation.
- Gradual brightness changes. When turned on/off on medium, high, and turbo modes, it will light up or fade gradually to protect eyes from the stimulation caused by sudden brightness changes.
- SOS mode available for emergency use.

## OUTPUT

F11 STANDARD	MODE 1	MODE 2	MODE 3	MODE 4	MODE 5
 (CW)	2300 ~ 750 lumens	600 lumens	150 lumens	30 lumens	1 lumen
 (NW)	2000 ~ 700 lumens	550 lumens	140 lumens	27 lumens	1 lumen
	1 ~ 110 minutes	2.5 hours	10 hours	50 hours	45 days
	153 Meters				
	5,850 CD				

\* The above data is the test results using a single customized 3000mAh lithium-ion battery under windless laboratory conditions. The runtime of turbo and high modes may vary depending on the external temperature and ventilation conditions.

Note:

Only the specified OLIGHT customized batteries can be used to directly recharge H2R.

**WATERPROOF**  
IPX 8



**DROP TEST**



**COMPLIANCE**



olightworld.com © Olight 05/18/17 V1

All performances are given in accordance with ANSI/NEMA FL1-2009 Standard.

Made in China

## LIGHT SOURCE

CREE XHP50 CW  
CREE XHP50 NW

## DIMENSIONS

**Length:** 4.33 in/110mm  
**Head Diameter:** 0.95 in/25mm  
**Body Diameter:** 0.91 in/23.2mm  
**Weight (Body):** 2.26 oz / 64g  
**Weight (Body including battery):**  
3.84 oz/ 109g  
**Weight (Body including battery and strap):**  
6.14 oz/ 174g

## BODY MATERIAL

6061-T6 aluminum alloy

## BATTERY SOURCE

Customized 3000mAh 18650 (included)

## WARRANTY

Olight's 5 Year warranty  
Visit [olightworld.com/warranty](http://olightworld.com/warranty)

## STANDARD ACCESSORIES:

- Head Strap and Mount
- Customized 3000mAh 18650 (inside product)
- Stainless Steel Pocket Clip (with product)
- Magnetic Charging Cable
- EVA Pad (replacement of the magnet)
- Single-sided Adhesive Replacement EVA Pad