

## Verdrahtungskanalreihe HA7

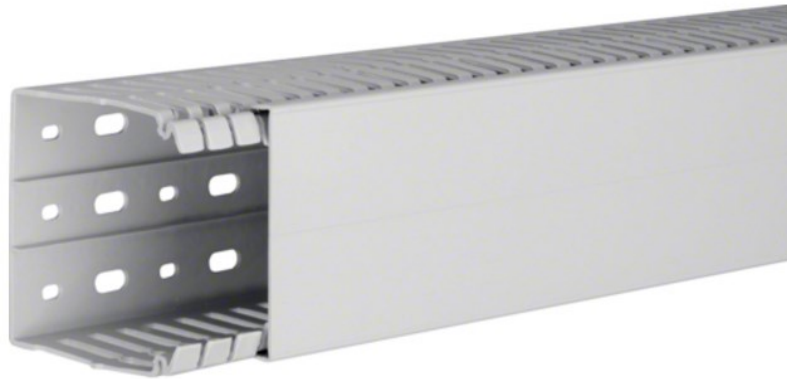


Abb. 1: HA780080



- geprüft für den Einsatz innerhalb von Schienenfahrzeugen nach EN 45545-2
- Prüfung nach EN 50085-2-3
- Halogenfrei
- Bodenlochung nach EN 50085
- Selbstverlöschend nach UL94 V0
- Temperaturbeständig: - 25°C bis + 90°
- UL gelistet File-Nr.: E48414 (all colors)
- CSA gelistet File-Nr.: 22009 (all colors)

Unterteil+Oberteil			
Referenz	Höhe	Breite	Länge
HA725025	25 mm	25 mm	2000 mm
HA725040	25 mm	40 mm	2000 mm
HA725080	25 mm	80 mm	2000 mm
HA740025	40 mm	25 mm	2000 mm
HA740030	40 mm	30 mm	2000 mm
HA740040	40 mm	40 mm	2000 mm
HA740060	40 mm	60 mm	2000 mm
HA740080	40 mm	80 mm	2000 mm
HA740100	40 mm	100 mm	2000 mm
HA760025	60 mm	25 mm	2000 mm
HA760030	60 mm	30 mm	2000 mm
HA760040	60 mm	40 mm	2000 mm
HA760060	60 mm	60 mm	2000 mm
HA760080	60 mm	80 mm	2000 mm
HA760100	60 mm	100 mm	2000 mm
HA760120	60 mm	120mm	2000 mm
HA780025	80 mm	25 mm	2000 mm
HA780030	80 mm	30 mm	2000 mm
HA780040	80 mm	40 mm	2000 mm
HA780060	80 mm	60 mm	2000 mm
HA780080	80 mm	80 mm	2000 mm
HA780100	80 mm	100 mm	2000 mm
HA780120	80 mm	120 mm	2000 mm
HA7100030	100 mm	30 mm	2000 mm
HA7100040	100 mm	40 mm	2000 mm
HA7100060	100 mm	60 mm	2000 mm
HA7100080	100 mm	80 mm	2000 mm
HA7100100	100 mm	100 mm	2000 mm

Oberteil		
Referenz	Breite	Länge
HA70252K	25 mm	2000 mm
HA70402K	40 mm	2000 mm
HA70802K	80 mm	2000 mm
HA70252	25 mm	2000 mm
HA70302	30 mm	2000 mm
HA70402	40 mm	2000 mm
HA70602	60 mm	2000 mm
HA70802	80 mm	2000 mm
HA71002	100 mm	2000 mm
HA71202	120 mm	2000 mm

for HA725025

for HA725040

for HA725080



Abb. 2: HA760060

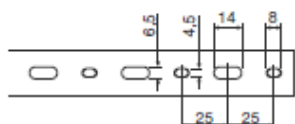


Abb. 3: BA70602

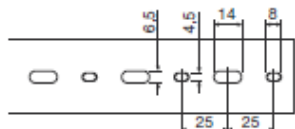
Drahtrückhalteklammer  
**BA7CLIP** für alle Breiten



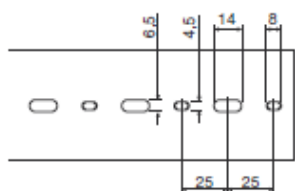
Abb. 4: BA7CLIP



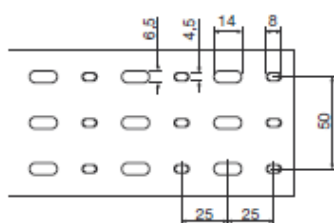
for duct width 25 mm



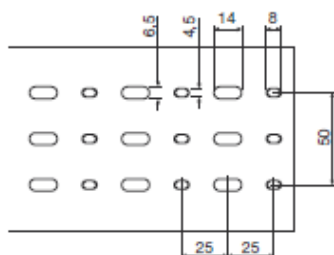
for duct width 40 mm



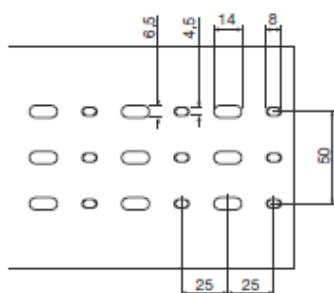
for duct width 60 mm



for duct width 80 mm



for duct width 100 mm



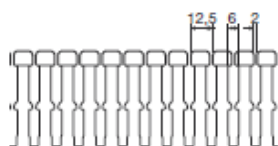
for duct width 120 mm



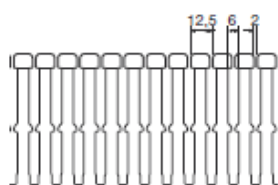
for duct height 25 mm



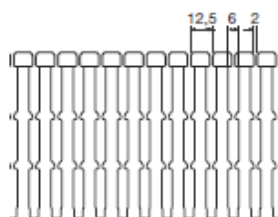
for duct height 40 mm



for duct height 60 mm



for duct height 80 mm



for duct height 100 mm

