

WB 66 - N - Buchse Panel Mount Antenne



WB 66 - N - Buchse

- robuste Antenne im Industriedesign
- Effiziente 2G/3G/4G und 3.8GHz 5G Antenne
- Einfache Montage

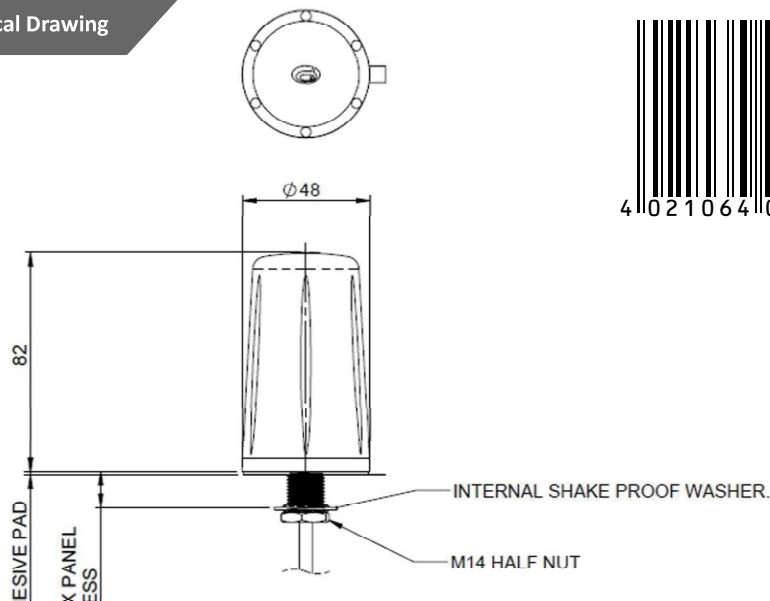


Die LPB low profile Antenne wurde so designed, dass Sie auch in extremsten Witterungsbedingungen einwandfrei funktioniert. Mit nur einer Höhe von 82mm und einer robusten Hülle ist diese Antenne bestens geschützt vor Vandalismus, Wetter und sonstigen äußeren Einflüssen.

Die Antenne bietet eine hervorragende Performance über eine sehr große Bandbreite. Über die Bandbreite von 698-960/1710-3800MHz bietet die Antenne eine Reihe von Anwendungsmöglichkeiten.

Artikel:103301 ohne Kabel

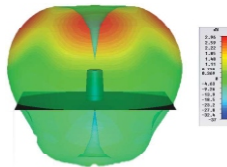
Technical Drawing



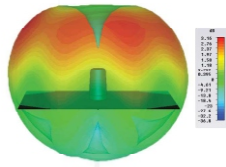
Electrical Data

All measurements taken on a 400 x 400mm groundplane with 0.5m of cable

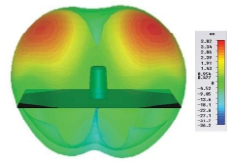
3D Gain Plot (700MHz)



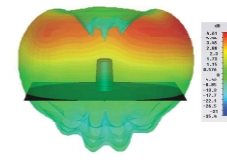
3D Gain Plot (800MHz)



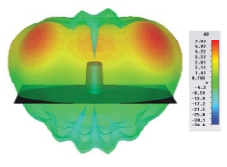
3D Gain Plot (900MHz)



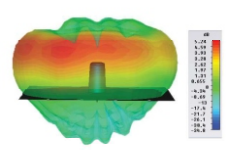
3D Gain Plot (1800MHz)



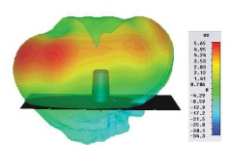
3D Gain Plot (2100MHz)



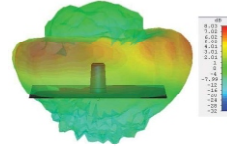
3D Gain Plot (2400MHz)



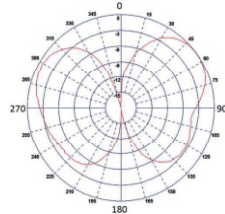
3D Gain Plot (2600MHz)



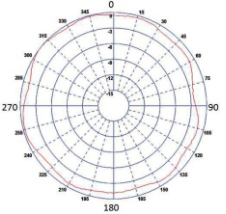
3D Gain Plot (3600MHz)



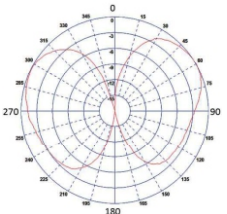
Typical E Plane (850MHz)



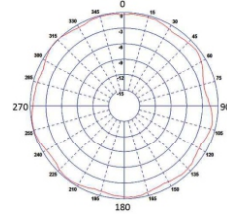
Typical H Plane (850MHz)



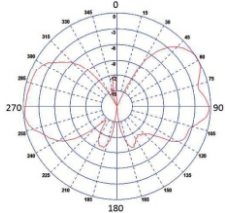
Typical E Plane (900MHz)



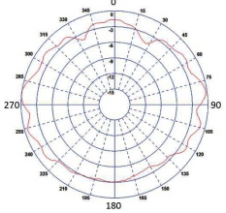
Typical H Plane (900MHz)



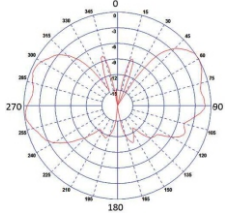
Typical E Plane (1800MHz)



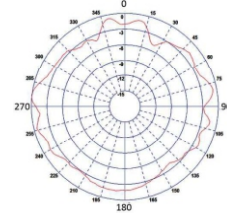
Typical H Plane (1800MHz)



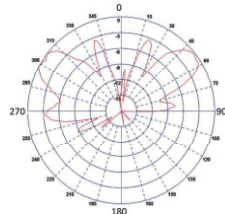
Typical E Plane (2000MHz)



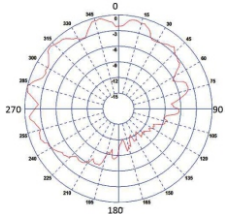
Typical H Plane (2000MHz)



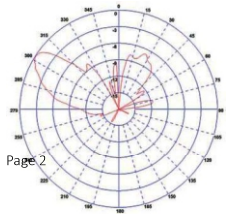
Typical E Plane (2600MHz)



Typical H Plane (2600MHz)



Typical E Plane (3600MHz)



Typical H Plane (3600MHz)

