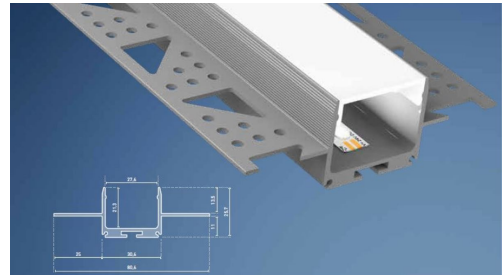


# CATania 30 dry construction profile

- hardly visible aluminium edge in installed condition
- can be mounted without having to intervene in the substructure thanks to 25 mm height
- perforated wings for user-friendly installation
- all CATania 30 covers and inserts can be mounted
- in combination with the CATania 30 UP profile, a continuous light line passing from ceiling to wall is possible

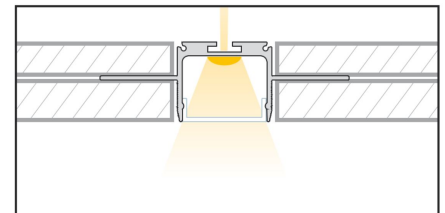
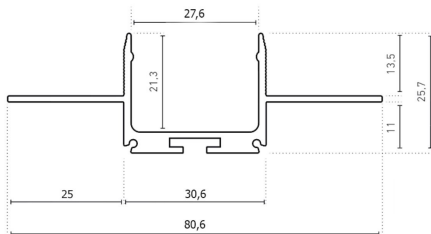


**Please refer to the notes on expansion and assembly at the end of the data sheet!**

## ALUMINIUM PROFILE

	<b>62394151</b>
<b>Description</b>	CATania 30 dry construction profile, aluminium raw
<b>Length</b>	1000 mm
<b>Width</b>	80,6 mm
<b>Height</b>	25,7 mm
<b>Material</b>	Aluminium EN AW 6060
<b>Weight</b>	540 gr

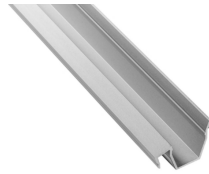
For other lengths please replace the last digit of the article number by: 2 = 2.01m / 3 = 3.02m / 5 = 5.03m



## INLAY

	<b>62398841</b>
<b>Description</b>	CATania insert profile, asymmetrical, for mounting the LEDlight flex family, combinable with GARliano covers, light deflection 14°
<b>Material</b>	Aluminium EN AW 6060
<b>Finish</b>	anodised
<b>Length</b>	1000 mm
<b>Width</b>	27,4 mm
<b>Height</b>	17,91 mm

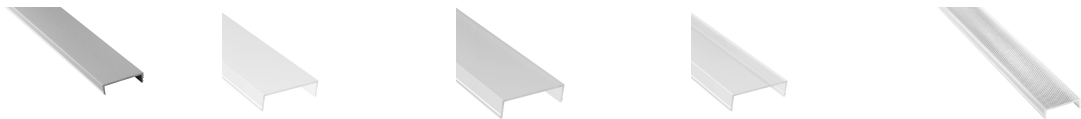
For other lengths please replace the last digit of the article number by: 2 = 2.01m / 3 = 3.02m / 5 = 5.03m



## COVER

	62398851	62399821	62399851	62399861	62399871
<b>Description</b>	anodised aluminium cover	cover opal white, PMMA, for a homogenous and glare-free light distribution	cover nature, little light consumption and hiding technical view at the same time	cover clear, for the protection of the LED stripe	prisma cover to reduce the dazzling effect
<b>Material</b>	Aluminium	PMMA			
<b>Transmission in %</b>	0	77	84	91	
<b>Length</b>	1000 mm				
<b>Width</b>	27,4 mm				
<b>Height</b>	7,9 mm				

For other lengths please replace the last digit of the article number by: 2 = 2.01m / 3 = 3.02m / 5 = 5.03m



## END CAPS

	62394145
<b>Description</b>	End cap set CATania 30 dry construction profile, aluminium raw
<b>Material</b>	Aluminium EN AW 5052
<b>Length</b>	1,5 mm
<b>Width</b>	30,6 mm
<b>Height</b>	25,7 mm

Note: The screws for the end caps must be placed and screwed in at a right angle (90°) to the screw channel and may only be screwed in with a max. tightening torque of 0.35 Nm to prevent the screw head from unscrewing or the screw from overtightening (recommended bit PH1).

## ACCESSORIES

	62398802	62398803	62398806
<b>Description</b>	2x straight connectors, metal, incl. 8 grub screws	2x connectors, 90° angle, metal, incl. 8 grub screws	profile connector set adjustable, 304 stainless steel, 2 pieces, incl. grub screws, for an angled light line
<b>Material</b>	304 stainless steel		
<b>Length</b>	80 mm	50,5 mm	104 mm
<b>Width</b>	10,5 mm	50,5 mm	10,5 mm
<b>Height</b>	1,7 mm		7 mm
<b>Remarks</b>	for an ascending/descending light line		



All aluminium profiles and covers are subject to certain length tolerances. This is +20/-0 mm irrespective of the length, i.e. a profile has at least the specified length, but can be up to 20 mm longer.

If you require an exact length, please specify this when ordering (article number 62397000).

Please note that the materials aluminum and PMMA can expand when the temperature changes vary greatly. With a temperature change of 20°C the expansion difference can be up to 1.2 mm per meter! This is no deficiency of the product but a normal physical process.

Installation note: If you directly install two aluminum profiles edge to edge (without end caps), please pay attention during installation, that you don't glue the LED strip directly over the joint, since the profiles at temperature fluctuations - especially at large lengths - will expand/contract (s. section 1) and then the LED tape may be damaged. At joints the LED strip has to be cut at the marked positions and reconnected with flexible solder bridges with corresponding expansion reserve (min. 5mm).

## NOTE

Press marks or slight scratches on profiles are production-related and do not constitute a defect.

The guarantee period for the product is 5 years and begins on the day of shipment. Reference is the date of the delivery bill. The guarantee period may differ for accessories.