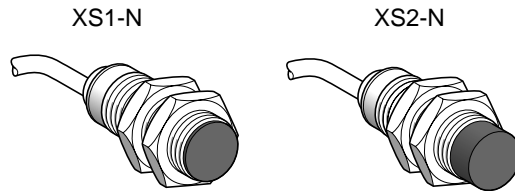
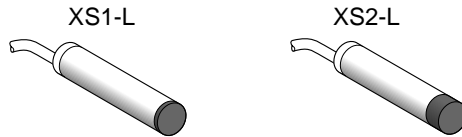


XS1-L / XS2-L / XS1-N / XS2-N

Inductive proximity sensors
Détecteurs de proximité inductifs
 Induktive Näherungsschalter
Detectores de proximidad inductivos
 Interruttori di prossimità induttivi
 Detectores de proximidade indutivos



Listing and Certification :
 Applicable on proximity switches bearing the UL and CSA marks only.
 Enclosure : Type 12,4X indoor use only
 For connector version, a suitable UL and CSA Approved connector must be used

⚠ DANGER / PELIGRO / DANGER

HAZARDOUS VOLTAGE Disconnect all power before servicing equipment. Electric shock will result in death or serious injury.	TENSION PELIGROSA Desenergice el equipo antes de realizarle servicio. Una descarga eléctrica podrá causar la muerte o lesiones serias.	TENSION DANGEREUSE Couper l'alimentation avant de travailler sur cet appareil. Une électrocution entrainera la mort ou des blessures graves.
---	--	--

Mechanical installation
Mise en œuvre mécanique
Mechanische Installation
Instalación mecánica
Messa in opera meccanica
Instalação mecânica

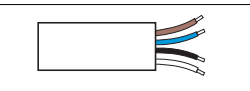
* Increased range model
 Portée augmentée
 Erhöhter Schaltabstand
 Alcance aumentado
 Portata maggiorata
 Alcance aumentado

(mm)	Sn	XS-L/N			XS-L/N.....S/D		S	T (Nm)	e1 ≥	e2 ≥	e3 ≥	d1 ≥	h ≥	x ≥
		a	b	c	S	D								
	Ø4	1	29	-	-	41	-	-	2	12	3	4	0	0
	M5x0,5	1	29	24	-	41	-	8	1,6	-	-	5	0	0
	Ø6,5	1,5*/2,5	33	-	-	42	45	-	3*/5	18*/30	4,5*/7,5	6,5*/10	0*/1,6	0*/1,3
	M8x1	1,5*/2,5	33	26	-	42	45	13	3*/5	18*/30	4,5*/7,5	8*/10	0*/1,6	0*/1,6
	M12x1	2*/4	33	26	-	-	48	17	4*/8	24*/48	6*/12	12*/14	0*/2,4	0/2,4
	M18x1	5*/10	33,5	26	-	-	48	24	10*/20	60*/96	15*/30	18*/28	0/3,6	0/3,6
	M30x1,5	10*/20	40,5	32	-	-	50	36	20*/40	120*/240	30*/60	30*/50	0*/6	0*/6
	Ø6,5	2,5	33	-	3	42	45	-	10	30	7,5	19,5	5	0
	M8x1	2,5	33	22	4	42	45	13	10	30	7,5	24	5	0
	M12x1	4	33	21	5	-	48	17	16	48	12	36	8	0
	M18x1	8	33,5	18	8	-	48	24	16	96	24	54	16	0
	M30x1,5	15	40,5	19	13	-	50	36	60	180	45	90	30	0

Electrical installation
Mise en œuvre électrique
Elektrische Installation
Instalación eléctrica
Messa in opera elettrica
Instalação elétrica

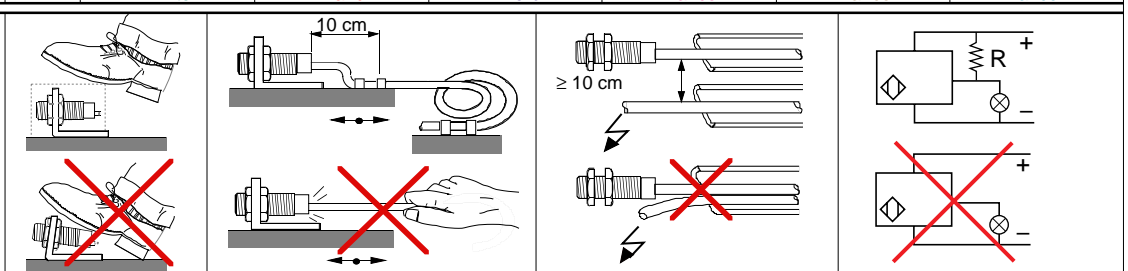
	XS1-L04P•31•/N05P•31•/31•S	XS-L06/N••P•34•/34•D/S	XS-L06/N••PC410/410D
	XS1-L04N•31•/N05N•31•/31•S	XS-L06/N••N•34•/34•D/S	XS-L06/N••NC410/410D
Voltage limits (1)	≡ 5...30 V	≡ 10...38 V	≡ 10...38 V
Load switching capacity (2)	0...100 mA	0...200 mA	0...200 mA
Voltage drop (3)	≤ 2 V	≤ 2 V	≤ 2 V
Current consumption (4)	≤ 10 mA	≤ 10 mA	≤ 10 mA

- (1) Limite de tension / Betriebsspannung / Límites de tensión / Limiti di tensione / Limites de tensão
 (2) Courant commuté / Schaltstrom / Intensidad conmutada / Corrente commuta / Corrente comutada
 (3) Tension de déchet / Spannungsfall (Ausgang durchgesteuert) / Tensión residual / Caduta di tensione / Tensão de defeito
 (4) Courant consommé / Leerlaufstrom / Intensidad consumida / Corrente consumata / Corrente consumida

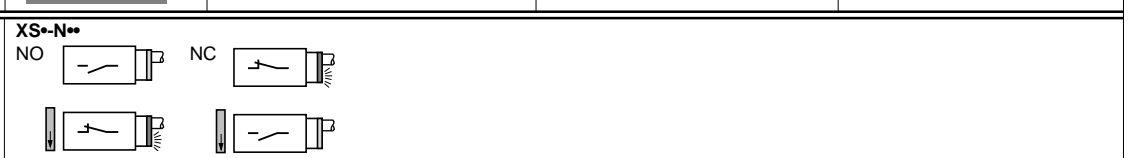


BN	Brown	Brun	Braun	Marrón	Marron	Castanho
BU	Blue	Bleu	Blau	Azul	Blu	Azul
BK	Black	Noir	Schwarz	Negro	Nero	Preto
WH	White	Blanc	Weiß	Blanco	Bianco	Branco

Installation precautions
Précautions de mise en œuvre
Vorsicht bei der Inbetriebnahme
Precaución de instalación
Consigli di messa in opera
Precaução de instalação



Indication
Signalisation
Funktionsanzeige
Señalización
Segnalazione
Sinalização



W91560470011 A02 1/2

XZ-CP / XZ-CC

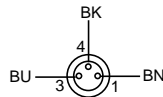
Machine cabling accessories
 Constituants de câblage machine
 Zubehör für Maschinen-
 Anschlußtechnik
 Contituyentes de conexionado
 Accessori di cablaggio
 Constituintes de cablagem

XS•-L/N•••••S

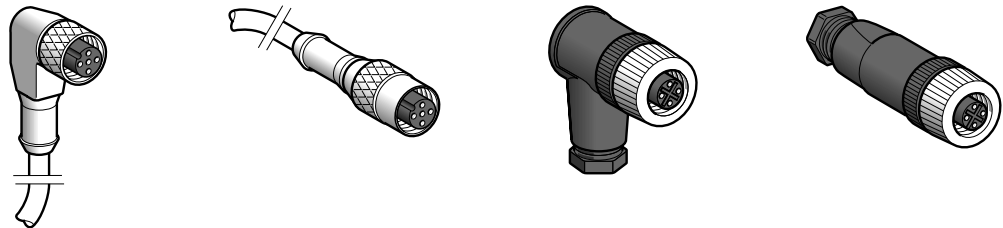


Dimensions Encombremets Abmessungen Dimensiones Dimensioni d'ingombro Altravancamentos				
	PvR L = 2 m.	XZ-CP0166L2	XZ-CP0266L2	XZ-CP0566L2
PvR L = 5 m.	XZ-CP0166L5	XZ-CP0266L5	XZ-CP0566L5	XZ-CP0666L5

Connection schemes
 Schémas de raccordement
 Anschlußpläne
 Esquemas de conexión
 Schemi di collegamento
 Esquemas de ligação

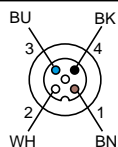


XS•-L/N•••••D/LD



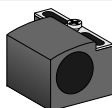
Dimensions Encombremets Abmessungen Dimensiones Dimensioni d'ingombro Altravancamentos				
	PvR L = 2 m.	XZ-CP1241L2	XZ-CP1141L2	-
PvR L = 5 m.	XZ-CP1241L5	XZ-CP1141L5	-	-
7P (Pg7)	-	-	XZ-CC12FCM40B	XZ-CC12FDM40B

Connection schemes
 Schémas de raccordement
 Anschlußpläne
 Esquemas de conexión
 Schemi di collegamento
 Esquemas de ligação



BN	Brown	Brun	Braun	Marrón	Marron	Castanho
BU	Blue	Bleu	Blau	Azul	Blu	Azul
BK	Black	Noir	Schwarz	Negro	Nero	Preto
WH	White	Blanc	Weiß	Blanco	Bianco	Branco

Saddle clamps
 Brides de fixation
 Klemmbefestigungsblock
 Brides de fijación
 Brides di fissaggio
 Braçadeiras de fixação



Ø 4	Ø 5	Ø 6,5	Ø 8	Ø 12	Ø 18	Ø 30
XSZ-B104	XSZ-B105	XSZ-B165	XSZ-B108	XSZ-B112	XSZ-B118	XSZ-B130