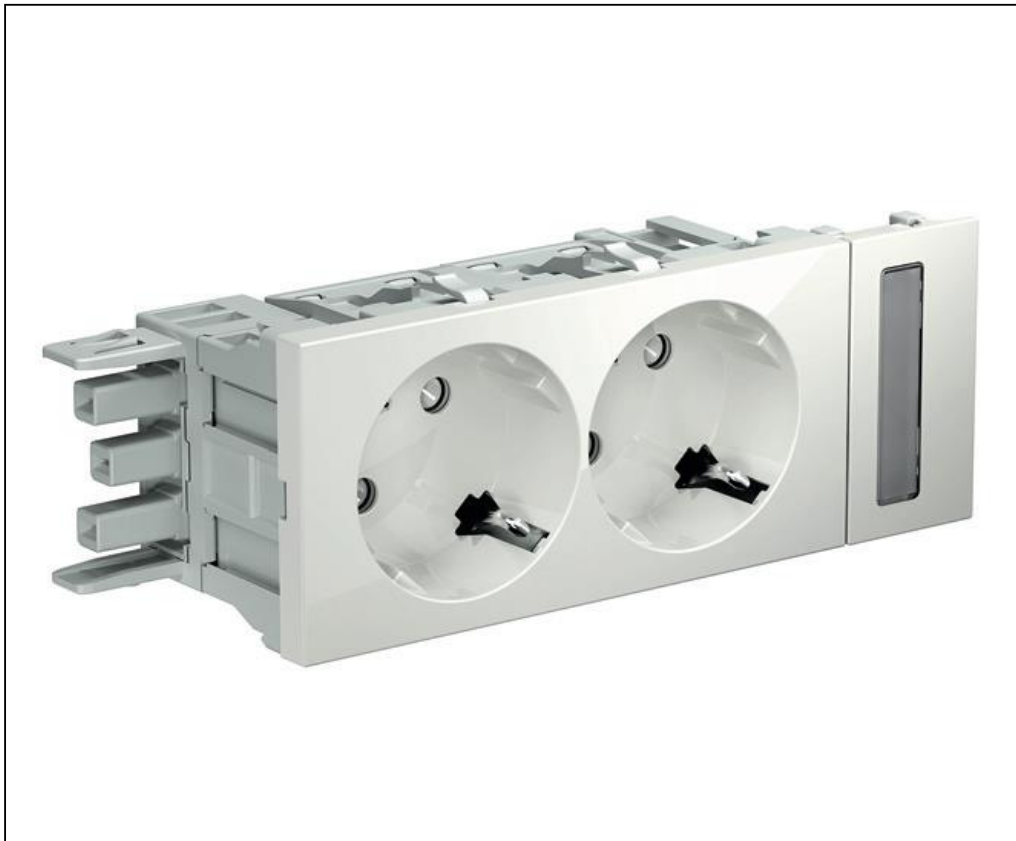


Product Environmental Profile

OPTILINE POWER SOCKET OUTLET





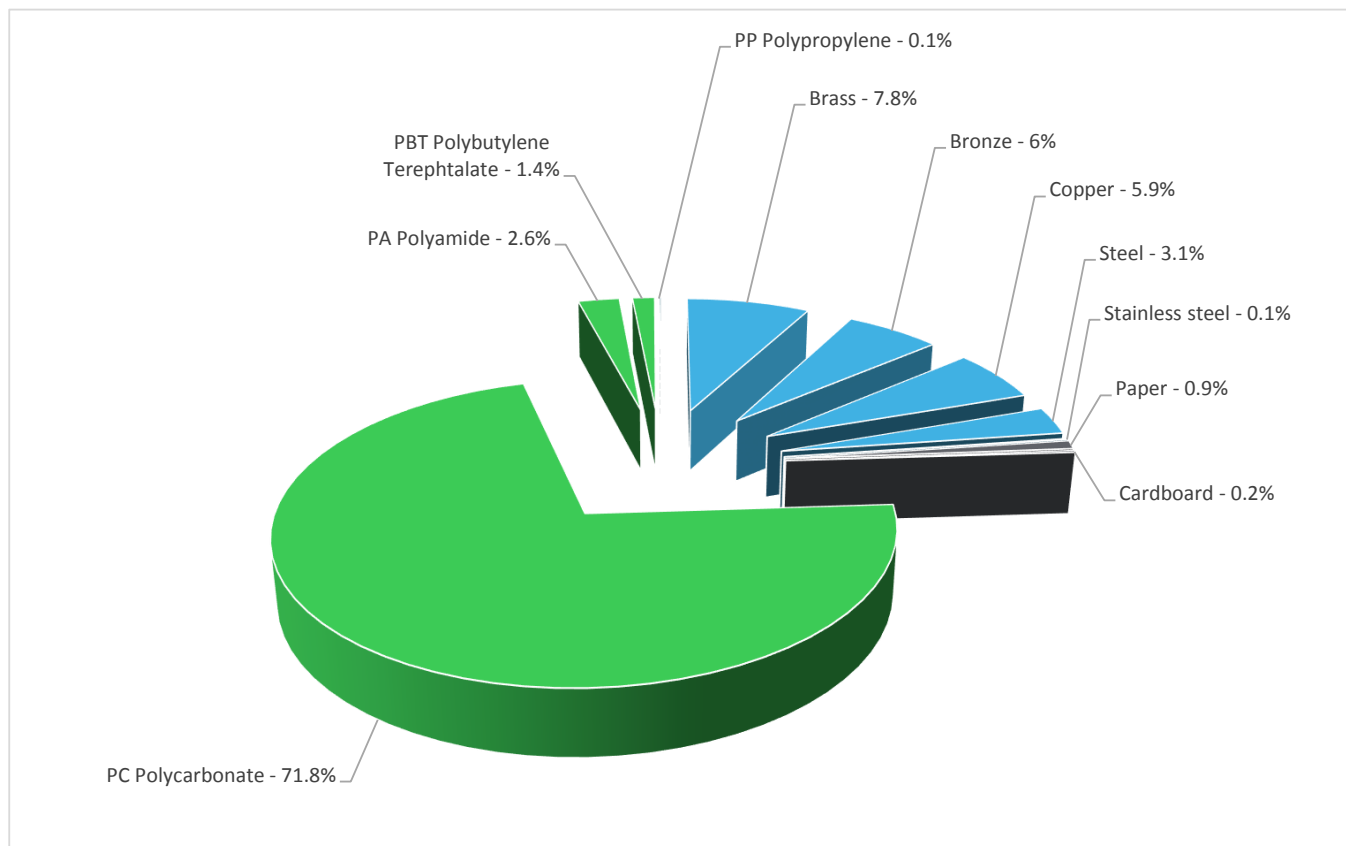
General information

Representative product	OPTILINE POWER SOCKET OUTLET - INS62000
Description of the product	The main function of the Optiline socket is to allow users to connect and disconnect the plug of an electrical load or the source of a signal from a network.
Functional unit	Connect/Disconnect during 20 years the plug of a load consuming 16A under a voltage of 250V while protecting the user from direct contact with live parts and with a protection class IP20 in accordance with the standard IEC 60529 and IK05 in accordance with the standard IEC 62262.



Constituent materials

Reference product mass 112 g including the product, its packaging and additional elements and accessories



Plastics	75.9%
Metals	22.9%
Others	1.1%



Substance assessment

Products of this range are designed in conformity with the requirements of the RoHS directive (European Directive 2011/65/EU of 8 June 2011) and do not contain, or only contain in the authorised proportions, lead, mercury, cadmium, hexavalent chromium or flame retardants (polybrominated biphenyls - PBB, polybrominated diphenyl ethers - PBDE) as mentioned in the Directive

As the products of the range are designed in accordance with the RoHS Directive (European Directive 2002/95/EC of 27 January 2003), they can be incorporated without any restriction in an assembly or an installation subject to this Directive.

Details of ROHS and REACH substances information are available on the Schneider-Electric Green Premium website

<http://www2.schneider-electric.com/sites/corporate/en/products-services/green-premium/green-premium.page>

Additional environmental information

The OPTILINE POWER SOCKET OUTLET presents the following relevant environmental aspects

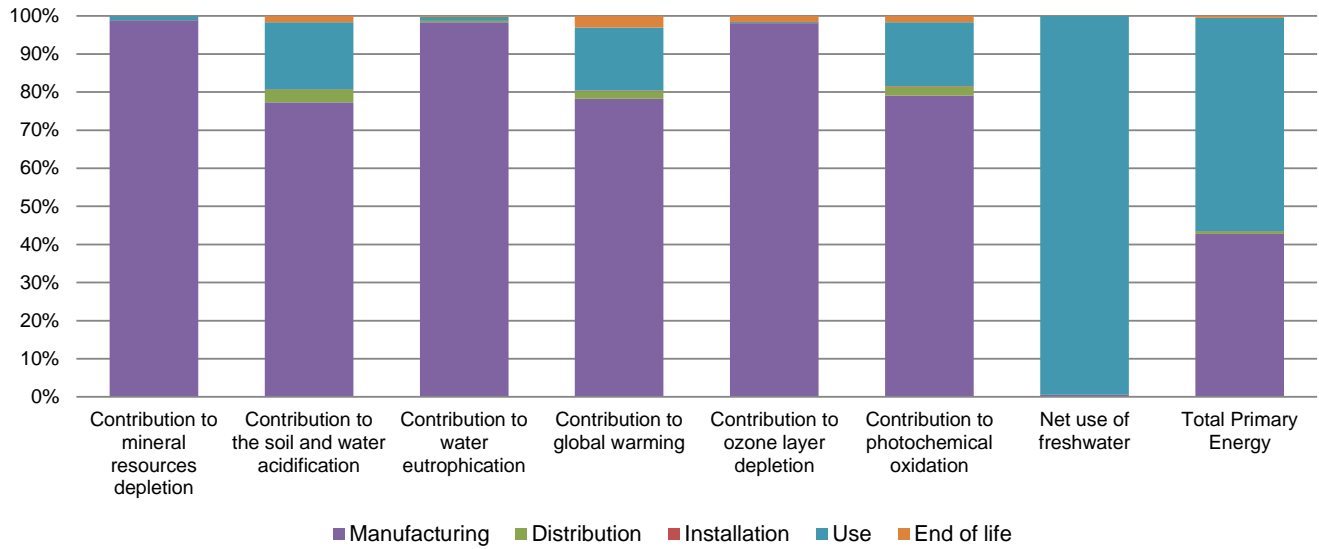
Manufacturing	Manufactured at a Schneider Electric production site ISO14001 certified
Distribution	Weight and volume of the packaging optimized, based on the European Union's packaging directive Packaging weight is 1.3 g, consisting of paper (75.69%), cardboard (15.82%), PP film (8.47%) Product distribution optimised by setting up local distribution centres
Installation	The product does not require special installation procedure and requires little to no energy to install. The disposal of the packaging materials is accounted during the installation phase (including transport to disposal).
Use	The product does not require special maintenance operations.
End of life	End of life optimized to decrease the amount of waste and allow recovery of the product components and materials No special end-of-life treatment required. According to countries' practices this product can enter the usual end-of-life treatment process. Recyclability potential: 18% Based on "ECO'DEEE recyclability and recoverability calculation method" (version V1, 20 Sep. 2008 presented to the French Agency for Environment and Energy Management: ADEME).

Environmental impacts

Reference life time	20 years								
Product category	Power socket								
Installation elements	No special components needed								
Use scenario	Load rate: 50 % of In Use rate: 50% of the RLT								
Geographical representativeness	Sweden								
Technological representativeness	The main function of the Optiline socket is to allow users to connect and disconnect the plug of an electrical load or the source of a signal from a network.								
Energy model used	<table border="1"> <thead> <tr> <th>Manufacturing</th> <th>Installation</th> <th>Use</th> <th>End of life</th> </tr> </thead> <tbody> <tr> <td>Manufacturing plant: Elda-Eltra S.A. Poland</td> <td>Electricity grid mix 1kV-60kV; AC; consumption mix, at consumer; 1kV - 60kV; SE</td> <td>Electricity grid mix 1kV-60kV; AC; consumption mix, at consumer; 1kV - 60kV; SE</td> <td>Electricity grid mix 1kV-60kV; AC; consumption mix, at consumer; 1kV - 60kV;</td> </tr> </tbody> </table>	Manufacturing	Installation	Use	End of life	Manufacturing plant: Elda-Eltra S.A. Poland	Electricity grid mix 1kV-60kV; AC; consumption mix, at consumer; 1kV - 60kV; SE	Electricity grid mix 1kV-60kV; AC; consumption mix, at consumer; 1kV - 60kV; SE	Electricity grid mix 1kV-60kV; AC; consumption mix, at consumer; 1kV - 60kV;
Manufacturing	Installation	Use	End of life						
Manufacturing plant: Elda-Eltra S.A. Poland	Electricity grid mix 1kV-60kV; AC; consumption mix, at consumer; 1kV - 60kV; SE	Electricity grid mix 1kV-60kV; AC; consumption mix, at consumer; 1kV - 60kV; SE	Electricity grid mix 1kV-60kV; AC; consumption mix, at consumer; 1kV - 60kV;						

Compulsory indicators		OPTILINE POWER SOCKET OUTLET - INS62000					
Impact indicators	Unit	Total	Manufacturing	Distribution	Installation	Use	End of Life
Contribution to mineral resources depletion	kg Sb eq	2.11E-05	2.08E-05	0*	0*	2.37E-07	0*
Contribution to the soil and water acidification	kg SO ₂ eq	1.96E-03	1.52E-03	6.60E-05	4.15E-07	3.45E-04	3.32E-05
Contribution to water eutrophication	kg PO ₄ ³⁻ eq	4.11E-03	4.04E-03	1.52E-05	1.25E-06	4.24E-05	1.03E-05
Contribution to global warming	kg CO ₂ eq	7.32E-01	5.73E-01	1.45E-02	1.17E-03	1.21E-01	2.24E-02
Contribution to ozone layer depletion	kg CFC11 eq	5.10E-08	5.01E-08	2.93E-11	0*	1.22E-10	7.94E-10
Contribution to photochemical oxidation	kg C ₂ H ₄ eq	2.03E-04	1.60E-04	4.71E-06	2.64E-07	3.40E-05	3.37E-06
Resources use	Unit	Total	Manufacturing	Distribution	Installation	Use	End of Life
Net use of freshwater	m ³	9.74E+00	5.73E-02	0*	0*	9.68E+00	0*
Total Primary Energy	MJ	2.95E+01	1.26E+01	2.04E-01	0*	1.65E+01	1.57E-01

ENVPEP1901005_V1 - Product Environmental Profile - OPTILINE POWER SOCKET OUTLET



Optional indicators		OPTILINE POWER SOCKET OUTLET - INS62000					
Impact indicators	Unit	Total	Manufacturing	Distribution	Installation	Use	End of Life
Contribution to fossil resources depletion	MJ	1.09E+01	9.62E+00	2.03E-01	0*	9.87E-01	1.26E-01
Contribution to air pollution	m³	1.14E+02	1.03E+02	6.15E-01	2.48E-02	9.95E+00	1.16E+00
Contribution to water pollution	m³	1.63E+02	1.54E+02	2.38E+00	2.10E-02	5.70E+00	1.51E+00
Resources use	Unit	Total	Manufacturing	Distribution	Installation	Use	End of Life
Use of secondary material	kg	3.30E-03	3.30E-03	0*	0*	0*	0*
Total use of renewable primary energy resources	MJ	6.63E+00	2.52E-01	0*	0*	6.38E+00	0*
Total use of non-renewable primary energy resources	MJ	2.28E+01	1.23E+01	2.04E-01	0*	1.01E+01	1.57E-01
Use of renewable primary energy excluding renewable primary energy used as raw material	MJ	6.61E+00	2.30E-01	0*	0*	6.38E+00	0*
Use of renewable primary energy resources used as raw material	MJ	2.19E-02	2.19E-02	0*	0*	0*	0*
Use of non renewable primary energy excluding non renewable primary energy used as raw material	MJ	2.01E+01	9.62E+00	2.04E-01	0*	1.01E+01	1.57E-01
Use of non renewable primary energy resources used as raw material	MJ	2.73E+00	2.73E+00	0*	0*	0*	0*
Use of non renewable secondary fuels	MJ	0.00E+00	0*	0*	0*	0*	0*
Use of renewable secondary fuels	MJ	0.00E+00	0*	0*	0*	0*	0*
Waste categories	Unit	Total	Manufacturing	Distribution	Installation	Use	End of Life
Hazardous waste disposed	kg	1.70E+00	1.51E+00	0*	0*	7.80E-04	1.93E-01
Non hazardous waste disposed	kg	9.84E-01	6.33E-01	5.13E-04	1.33E-03	3.49E-01	4.79E-04
Radioactive waste disposed	kg	4.21E-03	4.36E-04	0*	0*	3.77E-03	7.73E-07
Other environmental information	Unit	Total	Manufacturing	Distribution	Installation	Use	End of Life
Materials for recycling	kg	2.15E-02	2.49E-03	0*	0*	0*	1.90E-02
Components for reuse	kg	0.00E+00	0*	0*	0*	0*	0*
Materials for energy recovery	kg	4.77E-03	5.92E-04	0*	1.12E-04	0*	4.07E-03
Exported Energy	MJ	5.73E-04	0*	0*	5.73E-04	0*	0*

* represents less than 0.01% of the total life cycle of the reference flow

Life cycle assessment performed with EIME version EIME v5.8.1, database version 2016-11 in compliance with ISO14044.

The manufacturing phase is the life cycle phase which has the greatest impact on the majority of environmental indicators (based on compulsory indicators).

Please note that the values given above are only valid within the context specified and cannot be used directly to draw up the environmental assessment of an installation.

Registration number	ENVPEP1901005_V1	Drafting rules	PCR-ed3-EN-2015 04 02
Date of issue	02/2019	Supplemented by	PSR-0005-ed2-EN-2016 03 29
Validity period	5 years	Information and reference documents	www.pep-ecopassport.org
<i>Independent verification of the declaration and data</i>			
Internal	X	External	
<i>The elements of the present PEP cannot be compared with elements from another program.</i>			
<i>Document in compliance with ISO 14021:2016 « Environmental labels and declarations - Self-declared environmental claims (Type II environmental labelling) »</i>			

Schneider Electric Industries SAS
Country Customer Care Center
<http://www.schneider-electric.com/contact>
35, rue Joseph Monier
CS 30323
F- 92506 Rueil Malmaison Cedex
RCS Nanterre 954 503 439
Capital social 896 313 776 €

www.schneider-electric.com

Published by Schneider Electric

ENVPEP1901005_V1

© 2017 - Schneider Electric – All rights reserved

02/2019