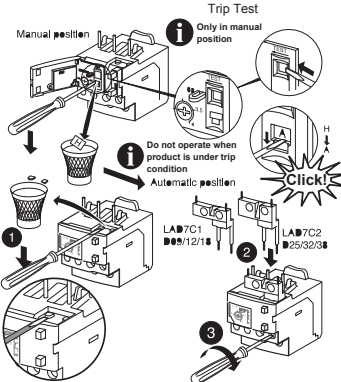


Schneider Electric Industries SAS
35, rue Joseph Monier
92506 Rueil Malmaison
France



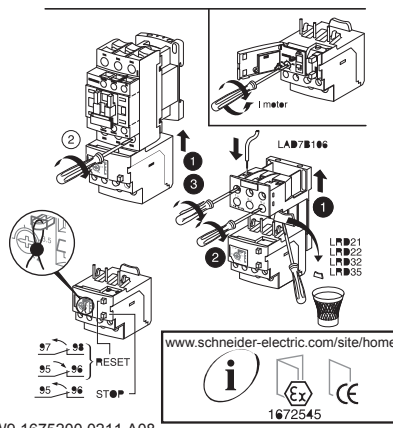
⚠️ DANGER
HAZARD OF ELECTRIC SHOCK, EXPLOSION, OR ARC FLASH
Disconnect all power before servicing equipment.
Failure to follow these instructions will result in death or serious injury.

AWG	(mm) ²	(mm)	(N.m)
1...2.5	8	1.7	
18...14	5/16	15	
1...6	10	1.7	
18...10	3/8	15	
1...4	18...10		

LRD01 to LRD21

AWG	(mm) ²	(mm)	(N.m)
1...2.5	8	1.7	
18...14	5/16	15	
2.5...10	10	2.5	
18...10	3/8	20	
1...6	18...10		

LRD22 to LRD35



W9 1675200 0211 A08
04 - 2016

AWG	(mm) ²	(mm)	(N.m)
1...2.5	8	1.7	
18...14	5/16	15	
1...6	10	1.7	
18...10	3/8	15	
1...4	18...10		
8	5/16	12	
9.5	3/8	15/22	

LRD016 to LRD216

AWG	(mm) ²	(mm)	(N.m)
1...2.5	8	1.7	
18...14	5/16	15	
2.5...10	10	2.5	
18...10	3/8	20	
1...6	18...10		
8	5/16	12	
9.5	3/8	15/22	

LRD226 to LRD356