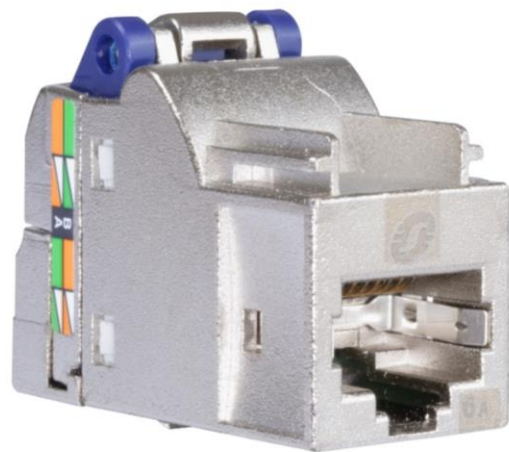


Product Environmental Profile

ACTASSI S-ONE SHIELDED RJ45 CAT6A CONNECTOR

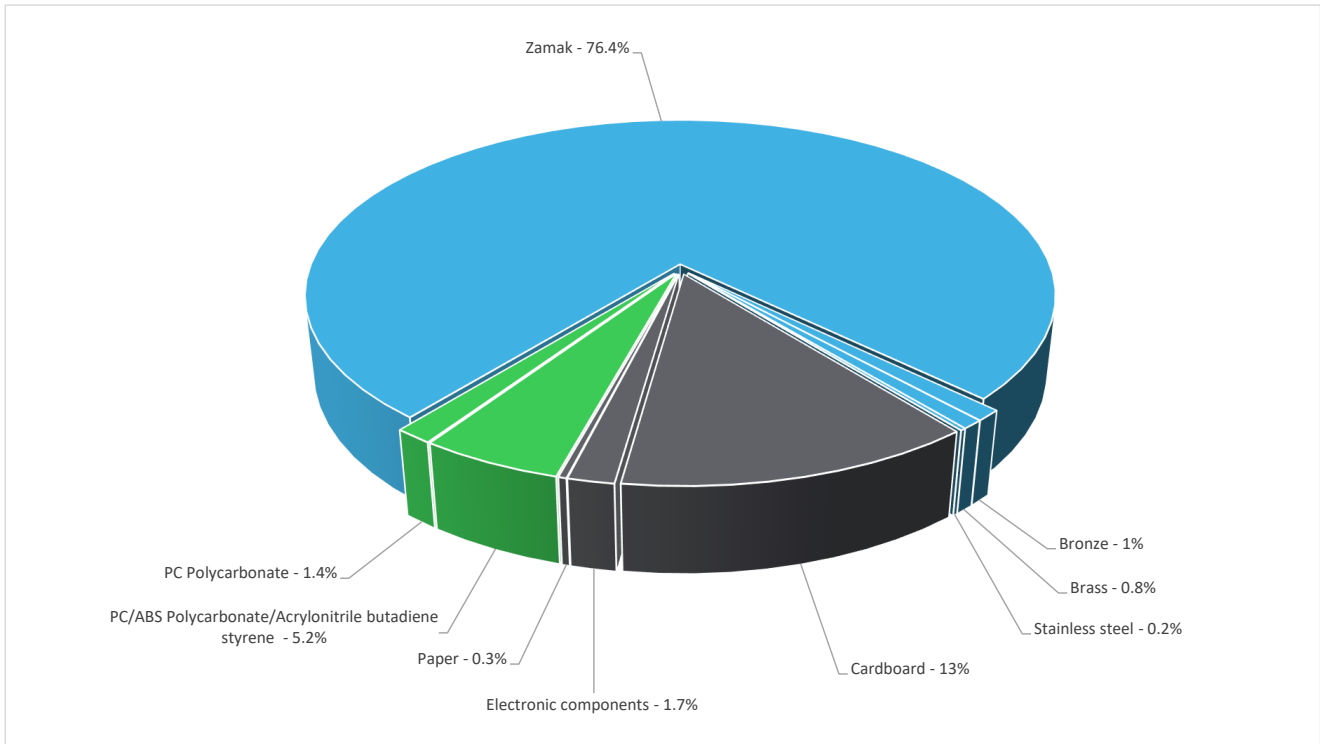


General information

Reference product	ACTASSI S-ONE SHIELDED RJ45 CAT6A CONNECTOR - VDIB1772XB12
Description of the product	The main function of the Actassi S-One RJ45 Connector product is to connect hardware interfaces as specified within standard ISO/IEC 11801-1 for transmission over Ethernet protocols over LAN (local area network) cabling installation within buildings and data centres.
Functional unit	Protect, link by a connection point for 10 years (reference service life) with a 100% use rate for data centre application.

Constituent materials

Reference product mass	35.79 g including the product, its packaging and additional elements and accessories
------------------------	--



Plastics	6.6%
Metals	78.4%
Others	15%

Substance assessment

Details of ROHS and REACH substances information are available on the Schneider-Electric Green Premium website <https://www.se.com/ww/en/work/support/green-premium/>

Additional environmental information

End Of Life	Recyclability potential:	89%	Recyclability rate has been calculated based on REEECYLAB tool developed by Ecosystem, for components/materials not covered by the tool, data from the "ECO'DEEE recyclability and recoverability calculation method" was taken. If no data was found a conservative assumption was used (0% recyclability).
-------------	--------------------------	------------	--


Environmental impacts

Reference service life time	10 years		
Product category	Copper telecom accessory		
Installation elements	The product does not require a special installation procedure and requires little to no energy to install.		
Use scenario	For the data centre application, the total power dissipation is 0.004927W at 100% use rate over the reference service life of 10 years.		
Technological representativeness	The Modules of Technologies such as material production, manufacturing process and transport technology used in this PEP analysis (LCA-EIME in this case) are Similar and representative of the actual type of technologies used to make the product in production.		
Geographical representativeness	Europe		
Energy model used	[A1 - A3]	[A5]	[B6]
	Electricity Mix; Production mix; Low voltage; DK	Electricity Mix; Production mix; Low voltage; UE-27	Electricity Mix; Production mix; Low voltage; UE-27
			[C1 - C4]
			Electricity Mix; Production mix; Low voltage; UE-27

Detailed results, including all the impact indicators mentioned in PCRed4 are available in the LCA report and on demand in a digital format - Country Customer Care Center - <http://www.schneider-electric.com/contact>

Mandatory Indicators		ACTASSI S-ONE SHIELDED RJ45 CAT6A CONNECTOR - VDIB1772XB12						
Impact indicators	Unit	Total	Manufacturing	Distribution	Installation	Use	End of Life	Loads and Benefits
			[A1 - A3]	[A4]	[A5]	[B1 - B7]	[C1 - C4]	[D]
Contribution to climate change	kg CO2 eq	5.10E-01	2.29E-01	6.13E-03	8.66E-03	1.77E-01	8.97E-02	-1.49E-01
Contribution to climate change-fossil	kg CO2 eq	5.09E-01	2.28E-01	6.13E-03	8.28E-03	1.77E-01	8.96E-02	-1.48E-01
Contribution to climate change-biogenic	kg CO2 eq	1.48E-03	7.98E-04	0*	3.85E-04	2.36E-04	5.92E-05	-6.79E-04
Contribution to climate change-land use and land use change	kg CO2 eq	1.69E-09	1.69E-09	0*	0*	0*	0*	0.00E+00
Contribution to ozone depletion	kg CFC-11 eq	6.66E-08	6.50E-08	9.39E-12	5.73E-10	7.56E-10	3.13E-10	-4.31E-08
Contribution to acidification	mol H+ eq	3.43E-03	2.03E-03	3.90E-05	3.44E-05	1.01E-03	3.10E-04	-8.01E-04
Contribution to eutrophication, freshwater	kg (PO4) ³⁻ eq	2.66E-06	2.08E-06	2.30E-09	6.26E-08	4.84E-07	3.48E-08	-5.29E-07
Contribution to eutrophication marine	kg N eq	4.71E-04	2.57E-04	1.83E-05	9.11E-06	1.15E-04	7.20E-05	-8.87E-05
Contribution to eutrophication, terrestrial	mol N eq	5.31E-03	2.75E-03	2.01E-04	6.87E-05	1.72E-03	5.62E-04	-9.56E-04
Contribution to photochemical ozone formation - human health	kg COVNM eq	1.54E-03	9.01E-04	5.07E-05	1.84E-05	3.68E-04	2.05E-04	-3.55E-04
Contribution to resource use, minerals and metals	kg Sb eq	7.27E-05	7.27E-05	0*	0*	1.28E-08	0*	-1.98E-05
Contribution to resource use, fossils	MJ	1.46E+01	3.84E+00	8.54E-02	9.02E-02	4.51E+00	6.03E+00	-1.98E+00
Contribution to water use	m3 eq	8.65E-01	4.36E-01	0*	3.70E-03	6.26E-03	4.19E-01	-6.68E-02

Inventory flows Indicators		ACTASSI S-ONE SHIELDED RJ45 CAT6A CONNECTOR - VDIB1772XB12						
Inventory flows	Unit	Total	Manufact.	Distribution	Installation	Use	End of Life	Loads and Benefits
			[A1 - A3]	[A4]	[A5]	[B1 - B7]	[C1 - C4]	[D]
Contribution to use of renewable primary energy excluding renewable primary energy used as raw material	MJ	8.38E-01	0*	1.14E-04	6.47E-03	8.65E-01	1.77E-03	3.84E-02
Contribution to use of renewable primary energy resources used as raw material	MJ	9.46E-02	9.46E-02	0*	0*	0*	0*	-8.57E-02
Contribution to total use of renewable primary energy resources	MJ	9.33E-01	5.88E-02	1.14E-04	6.47E-03	8.65E-01	1.77E-03	-4.72E-02

Contribution to use of non renewable primary energy excluding non renewable primary energy used as raw material	MJ	1.45E+01	3.74E+00	8.54E-02	9.02E-02	4.51E+00	6.03E+00	-1.98E+00
Contribution to use of non renewable primary energy resources used as raw material	MJ	9.80E-02	9.80E-02	0*	0*	0*	0*	0.00E+00
Contribution to total use of non-renewable primary energy resources	MJ	1.46E+01	3.84E+00	8.54E-02	9.02E-02	4.51E+00	6.03E+00	-1.98E+00
Contribution to use of secondary material	kg	0.00E+00	0*	0*	0*	0*	0*	0.00E+00
Contribution to use of renewable secondary fuels	MJ	0.00E+00	0*	0*	0*	0*	0*	0.00E+00
Contribution to use of non renewable secondary fuels	MJ	0.00E+00	0*	0*	0*	0*	0*	0.00E+00
Contribution to net use of freshwater	m³	2.13E-02	1.02E-02	0*	8.61E-05	1.46E-04	1.09E-02	-1.56E-03
Contribution to hazardous waste disposed	kg	1.03E+00	9.94E-01	0*	0*	3.30E-03	3.30E-02	-1.44E+00
Contribution to non hazardous waste disposed	kg	2.12E-01	1.56E-01	2.15E-04	2.82E-02	2.55E-02	2.78E-03	-1.72E-01
Contribution to radioactive waste disposed	kg	3.28E-05	2.32E-05	1.53E-07	3.78E-06	5.33E-06	3.05E-07	-2.91E-05
Contribution to components for reuse	kg	0.00E+00	0*	0*	0*	0*	0*	0.00E+00
Contribution to materials for recycling	kg	3.34E-02	0*	0*	4.76E-03	0*	2.86E-02	0.00E+00
Contribution to materials for energy recovery	kg	0.00E+00	0*	0*	0*	0*	0*	0.00E+00
Contribution to exported energy	MJ	0.00E+00	0*	0*	0*	0*	0*	0.00E+00
Contribution to biogenic carbon content of the product	kg de C	0.00E+00	0*	0*	0*	0*	0*	0.00E+00
Contribution to biogenic carbon content of the associated packaging	kg de C	0.00E+00	0*	0*	0*	0*	0*	0.00E+00

* represents less than 0.01% of the total life cycle of the reference flow

Life cycle assessment performed with EIME version 5.9.4, database version 2022-01 in compliance with ISO14044.

Detailed results, including all the optional indicators mentioned in PCRed4 are available in the LCA report and on demand in a digital format - Country Customer Care Center - <http://www.schneider-electric.com/contact>

Please note that the values given above are only valid within the context specified and cannot be used directly to draw up the environmental assessment of an installation.

Registration number :	ENVPEP110122EN_V1	Drafting rules	PEP-PCR-ed4-2021 09 06
Validity period	5 years	Supplemented by	PSR-0005-ed3-EN-2023 06 06
Date of issue	12/2023	Information and reference documents	www.pep-ecopassport.org
Independent verification of the declaration and data, in compliance with ISO 14021 : 2016			
Internal	X	External	
The PCR review was conducted by a panel of experts chaired by Julie ORGELET (DDemain)			
PEP are compliant with XP C08-100-1 :2016 or EN 50693:2019			
The elements of the present PEP cannot be compared with elements from another program.			
Document in compliance with ISO 14021 : 2016 « Environmental labels and declarations. Type II environmental declarations »			

Schneider Electric Industries SAS
 Country Customer Care Center
<http://www.se.com/contact>
 35, rue Joseph Monier
 CS 30323
 F- 92500 Rueil Malmaison Cedex
 RCS Nanterre 954 503 439
 Capital social 928 298 512 €

www.se.com

Published by Schneider Electric

ENVPEP110122EN_V1

©2023 - Schneider Electric – All rights reserved

12/2023