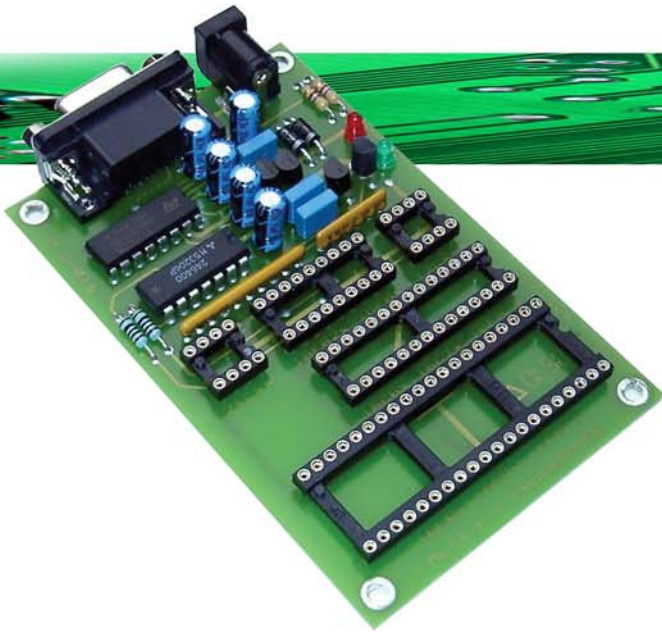


PROGRAMMER FOR MICROCHIP PIC MICROCONTRÔLERS PIC12Cxxx / PIC12Fxxx / PIC16Cxxx / PIC16Fxxx / PIC18Fxxx AND EEPROMS 24Cxxx ON SERIAL PORT

Support over 150 components



PIC-01



Introduction:

The PIC-01 allows you to program over 150 different PIC microcontrôleurs from Microchip. (PIC12Cxx, PIC12Fxxx, PIC16Cxxx, PIC16Fxxx and PIC18Fxxxx family), as well as serial EEPROMs, (24Cxx family). Provided with 5 tulip sockets, it supports devices in DIP packages of 8, 18, 28 and 40 pins. It is equipped with a genuine RS232 interface which permits connecting it to the serial port (supplied cable) of any compatible PC. It permits to read, write, erase, test and edit PROGRAM, EEPROM and registry of each microcontrôleur. It works with IcProg, PonyProg et WinPic800 software under Windows 98/XP/VISTA/Windows7/Windows8/Windows10 (32/64bits).

Require a continuous power pack of no regulated 12Vdc / 300mA or regulated 16Vdc / 300mA.

Features:

Accepts standard file formats: JEDEC, INTEL (Extended) HEX, INTEL HEX16 and auto find format.

Read / Write / Verify / Erase / Blank Check functions.

Editing of the microcontrôleur configuration fuses memory (registers).

Separate buffers to show PROGRAM memory / EEPROM data memory / (Registers) Fuses memory.

Not need exterior adapter for all DIP package devices.

Compatible with ICprog / PonyProg / WinPic800 softwares.

Supports Windows XP / VISTA / Windows 7 / Windows 8 / Windows10 (32bit and 64bit) with 100MB of spare capacity.

Hardware & Electrical specifications:

Dimensions board : 112 x 61 x 15mm, Weight : 45g

Dimensions package : 190 x 115 x 35mm, Weight : 190g

Require a continuous power pack of no regulated 12Vdc / 300mA with 2,1mm connector (+ in the middle, - around).

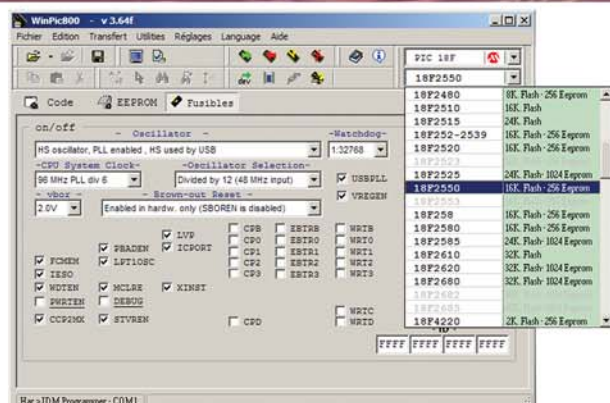
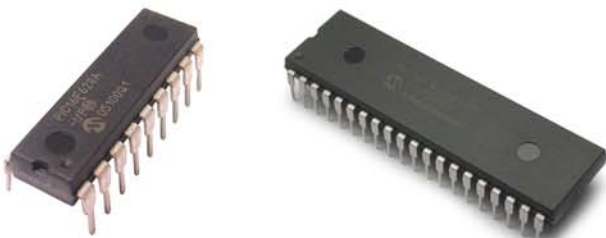
Item includes:

Programmer with several tulip DIP package..

A serial extension lead SUBD9M - SUBD9F.

3 softwares on CD-ROM, (IcProg, PonyProg, WinPic800).

User manual in English, French, German, Dutch.



Products informations : www.seeit.fr



DEVICES LIST PIC-01

Push "CTRL + F" keys to find a component

Universal PIC12Cxx / PIC12Fxx / PIC16Cxxx / PIC16Fxxx / PIC18Fxxx programmer and 24Cxx EEPROMs

Total : 176 components

References:	Supported devices by WinPic800 version 3.64H :						
PIC10Fxxx	PIC10F200	PIC10F202	PIC10F204	PIC10F206			
PIC12Fxxx	PIC12F508	PIC12F509	PIC12F510	PIC12F629	PIC12F635	PIC12F675	PIC12F683
PIC16Cxxx	PIC16C61	PIC16C62	PIC16C62A	PIC16C62B	PIC16C63	PIC16C63A	PIC16C64
	PIC16C64A	PIC16C65	PIC16C65A	PIC16C65B	PIC16C66	PIC16C67	PIC16C620
	PIC16C620A	PIC16C621	PIC16C621A	PIC16C622	PIC16C622A	PIC16CE623	PIC16CE624
	PIC16CE625	PIC16C71	PIC16C72	PIC16C72A	PIC16C73	PIC16C73A	PIC16C73B
	PIC16C74	PIC16C74A	PIC16C74B	PIC16C76	PIC16C77	PIC16C710	PIC16C711
	PIC16C712	PIC16C716	PIC16C745	PIC16C765	PIC16C773	PIC16C774	PIC16C923
	PIC16C924	PIC16C925	PIC16C926				
PIC16Fxxx	PIC16F627	PIC16F627A	PIC16F628	PIC16F628A	PIC16F630	PIC16F636	PIC16F639
	PIC16F648A	PIC16F676	PIC16F684	PIC16F685	PIC16F687	PIC16F688	PIC16F689
	PIC16F690	PIC16F73	PIC16F74	PIC16F76	PIC16F77	PIC16F716	PIC16F737
	PIC16F747	PIC16F767	PIC16F777	PIC16F83	PIC16F84	PIC16F84A	PIC16F87
	PIC16F88	PIC16F818	PIC16F819	PIC16F870	PIC16F871	PIC16F872	PIC16F873
	PIC16F873A	PIC16F874	PIC16F874A	PIC16F876	PIC16F876A	PIC16F877	PIC16F877A
PIC18Fxxx	PIC18F1220	PIC18F2220	PIC18F2320	PIC18F2331	PIC18F2410	PIC18F242	PIC18F2439
	PIC18F2420	PIC18F2431	PIC18F2455	PIC18F248	PIC18F2480	PIC18F2510	PIC18F2515
	PIC18F252	PIC18F2539	PIC18F2520	PIC18F2525	PIC18F2550	PIC18F258	PIC18F2580
	PIC18F2585	PIC18F2610	PIC18F2620	PIC18F2680	PIC18F4220	PIC18F4320	PIC18F4331
	PIC18F4410	PIC18F442	PIC18F4439	PIC18F4420	PIC18F4431	PIC18F4455	PIC18F448
	PIC18F4480	PIC18F4510	PIC18F4515	PIC18F452	PIC18F4539	PIC18F4520	PIC18F4525
	PIC18F4550	PIC18F458	PIC18F4580	PIC18F4585	PIC18F4610	PIC18F4620	PIC18F4680
EEPROMs 24Cxx	24C01	24C02	24C04	24C08	24C16	24C32	24C64
	24C128	24C256	24C512				

References:	Old PIC supported by Icplog version 1.06C :						
PIC12Cxxx	PIC12C508	PIC12C508A	PIC12C509	PIC12C509A	PIC12CE518	PIC12CE519	PIC12C671
	PIC12C672	PIC12CE673					
PIC16Cxxx	PIC16C433	PIC16C84	PIC16C505	PIC16C715	PIC16C717	PIC16C770	PIC16C771
	PIC16C781	PIC16C782					