

Operating Manual

Windows™ Operating Software **GSOFT 3050** for GMH 3xxx Handheld-measuring Instruments

Version 1.0

Contents:

1	General Information	2
1.1	Software Operation	2
1.2	Software License Agreement	2
1.3	Software Registration	2
1.4	System Requirements	2
1.5	Software Installation	2
1.6	Significance of Computer Time	2
2	Operating Software GSOFT3050	3
2.1	Screen Elements	3
2.1.1	Menu bar	3
2.1.2	Toolbar	3
2.2	Logger Functions	3
2.2.1	Open GMHs	3
2.2.2	GMH Data Window	4
2.2.3	Start Logger Recording	4
2.2.4	Reading in of Measurements	5
2.2.5	Stop Logger Recording	5
2.3	File Operating	5
2.3.1	Export Files	5
2.3.2	Print File	5
2.4	Measurement Diagrams	5
2.4.1	Create a new Diagram	5
2.4.2	Add Measuring Series	6
2.4.3	“Zooming“: Enlarge a Data Display Detail	6
2.4.4	Print Diagrams	6
2.5	Operating with Views	6

1 General Information

1.1 Software Operation

Unless the user of this manual has a basic knowledge of how to handle a personal computer and work with the operating system Windows™, we recommend that he acquires some prior to installation of this software (operating manuals, specialised literature, introductory courses etc.)

1.2 Software License Agreement

We kindly ask you to carefully read the software license agreements on the disk package. By opening the package you agree to the stipulations mentioned.

1.3 Software Registration

Get your software registration now! It is worth it!

As a registered customer you will have the following advantages:

- **Technical support:** It is only our registered clients who will receive support as far as technical questions on the programs are concerned.
- **Low-priced update offers:** It is only our registered customers who may use our low-priced update offers.
- **Latest Information:** We are enlarging our product range constantly. As a registered customer we will keep you informed about our new and improved products. We want you to be up to date!

Your opinion counts: Let us know your wishes and recommendations.

Your opinion counts and may be used when we modify existing, or develop new products.

A blank registration form is included. Simply fax us the completed form.

1.4 System Requirements

- IBM compatible PC (Pentium™)
- At least 20 MB hard disk capacity available
- CD-ROM drive
- At least 32 MB main memory
- Windows™ 95 , 98 , NT 4.0 (with Service Pack 3.0) or better
- mouse
- One unassigned serial interface
- Interface adapter (e.g. GRS 3100 for 1 GMH3xxx-Hand-measuring instrument; GRS3104 for max. 4 GMH3xxx)

1.5 Software Installation

- Start Windows™
- Insert CD-ROM in CD-ROM drive
- Select "Execute" in Menu "Start"
- Enter "d:\setup" - d stands for the letter of your CD-ROM drive – and acknowledge. In case your CD-ROM drive is not ,d', please use the corresponding letter.
- Follow now the instructions given by the installation program.
- A new program group with the following program icon will be created:
The software will be started by double clicking on this symbol.
- Start program, choose the language that you desire, and the interface to which you have connected your interface adapter.



1.6 Significance of Computer Time



Each GMH 3000 instrument with logger function includes a real time clock which can be adjusted to the computer time. To adjust the GHM time correctly it is absolutely necessary to prove the computer time. When required, this time can be corrected by changing the referring system settings.

2 Operating Software GSOFT3050

GSOFT3050 allows usage of logger functions of the GMH3000-handheld-measuring instruments (GMH3250, GMH3350, ... ; which will be called GMH in the following texts). Logger recordings can be started, stopped, read in and shown. It is also possible to use more than one measuring instrument simultaneously and show their Data together in Diagrams.

2.1 Screen Elements

2.1.1 Menu bar

You can easily have access to all software functions by using the menu bar. The content of the menu bar depends on the program status:



2.1.2 Toolbar

To ensure comfortable software operation the most important software functions have been put together at the Toolbar. The content of the toolbar depends on the program status:



1.1	1.2	1.3	2.1	2.2	2.3	2.4	3.1	4.1	4.2
File functions:			Logger functions:				Data representation:		
1.1 open file			2.1 connect measure instruments				3.1 create new diagram		
1.2 save file			2.2 restart logger recording				Further functions:		
1.3 print file			2.3 stop logger recording				4.1 interface configuration		
			2.4 read logger data				4.2 program information		

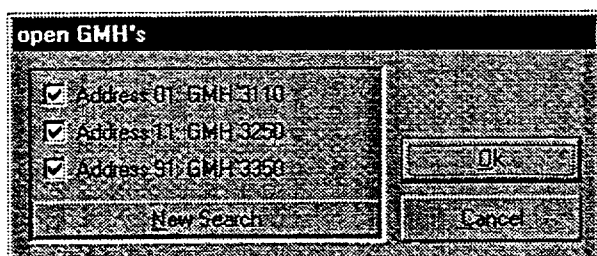
When moving the mouse pointer over a symbol a short description of the function is shown after a short time.

2.2 Logger Functions

2.2.1 Open GMHs



- Connect GMHs to the interface adapter and switch it on
- In case of connecting more than one GMH to an interface:
- To adjust the basic address of a GMH (only supported by instruments of the new generation) use the menu (please read the GMH's operating manual) and give each instrument a different address.
- Choose menu 'measure instrument / open...' or click at the corresponding toolbar symbol.
- GSOFT3050 is now searching for connected measure instruments.
- The GMH's found will be shown as follows:

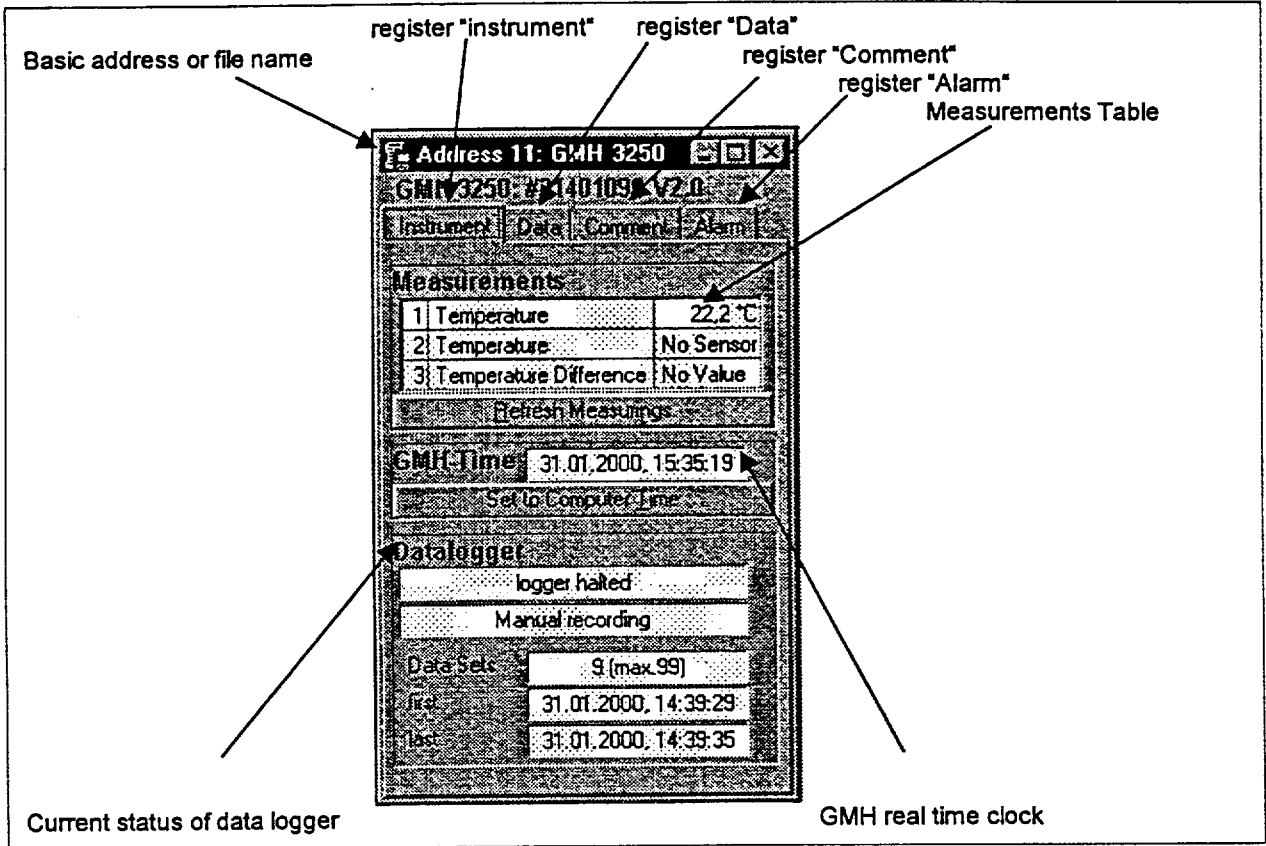


If not, please check the following points:

- Are the GMHs switched on and connected to the interface adapter ?
- Did you choose the correct interface ? ("configuration / interface")
- Did you connect the interface cable with the correct connector of the PC ?
- As far as GRS3104 and 3105 are concerned: provided tension voltage OK ?
- Using more than one instrument: Are the base addresses different ?

Marked GMHs will be opened by 'OK'. Each GMH will be shown by a different window.

2.2.2 GMH Data Window



Please check real time clock and adjust it when necessary (by 'Set at GMH-Time')

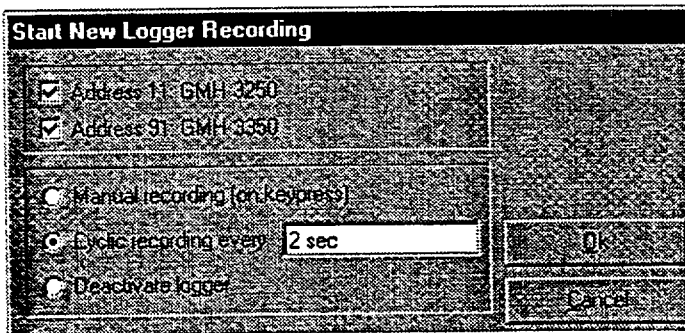
2.2.3 Start Logger Recording



When logger recordings are restarted, all Data which have been recorded until that moment will be deleted!! Please read in and save important information immediately!

To start a new recording please select "instrument / start new logger recording" or click at the corresponding toolbar symbol.

A selection of loggers which can be started will appear:



Marked GMHs will be started.

Selection of recording type:

- Manual logger: GMH records Data, when the key 6 ('store') is being pressed.
- cyclical logger: GMH records Data automatically within the selected interval, the recording will be stopped when memory is filled.
- Logger deaktivieren: Das GMH verhält sich wie ein Standardgerät ohne Logger, Taste 6 bewirkt ein 'Einfrieren' des Anzeigewertes: 'HLD'

2.2.4 Reading in of Measurements

In case that more than one GMH with logger data are connected, you can select the GMHs which should be read in. Loggers, operating on cyclic recording have to be stopped before their data can be read in. This means that you have to interrupt recordings of a logger which is operating on cyclic recording! The information and instructions you need will be given by the program. After loading the data you can see them by selecting register „Data“. The field which have a whit background and are used for table headlines can be changed. You can enter any text at the register „comment“. If you might need these data in future please save them now by selecting menu „file“ function „save file“.

2.2.5 Stop Logger Recording

If recording is stopped (as far as cyclic loggers are concerned), data which have been saved until that moment are preserved.

2.3 File Operating

If you have saved logger data by selecting menu „file“ function „save“ or „save as“ you can re-load them at any time into the program to see the data or to analyse them. In that case please select „File / open...“ and open the corresponding file.

2.3.1 Export Files

Files can be saved as ASCII (=text) – file to be able to open them e.g. in word processing programs or spreadsheet programs. Select therefore the data window in question and select at the menu „file/export ...“. Please pay attention to make the correct adjustments in the following dialog window „export files“, especially with spreadsheet programs.

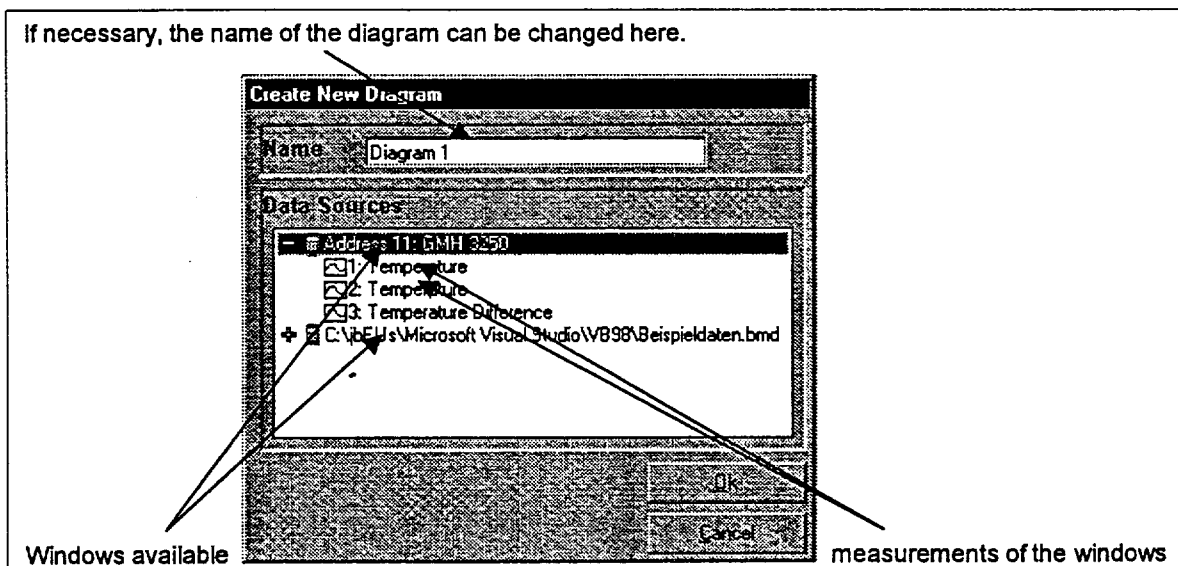
2.3.2 Print File

The data can be printed in tabular form on condition that a printer has been installed at your computer. For Printing please select the window in question and select also „file / print ...“. By using „File / printer setup“ you can change the adjustments of your printer or select another printer.


2.4 Measurement Diagrams

2.4.1 Create a new Diagram

To watch measurements in a diagram please select „create new diagram“ from „diagram“ or the corresponding toolbar symbol. A selection of the data sources available appears:



A click at the (+) or (-) signs shows or hides the available curves of the respective window.

Mark -symbol to select all measurements of the respective data source or:

Select -symbol to select a single measurement.

Click at "OK" and the selected measurements will be shown. This is the way how you can create as many diagrams as you need.

2.4.2 Add Measuring Series

To show further measuring series in one diagram, select them and click at "diagram / add series" in the menu or at the corresponding symbol of the diagram window. A selection of the data sources will appear again and you can select further measuring series. A maximum of 10 curves can be shown in one diagram.

2.4.3 "Zooming": Enlarge a Data Display Detail

Simply move the mouse pointer to the beginning of the region which you like to enlarge, keep the left mouse key pressed and move the mouse to the end of the region in question, let go of the mouse key: The concerned part will be enlarged. By selecting "zoom back" the screen part regarded before will be restored. With "zoom everything" the whole diagram will be restored. You can move the enlarged part with arrow symbols to the right, to the left, up and down. If you want to show detailed screen parts we recommend to you the function "manual zoom". This is used to adjust a certain part by entering of numbers and times.

2.4.4 Print Diagrams

Of course you can also print diagrams. Please select the diagram window in question and select the function "Print file".

2.5 Operating with Views

With your mouse you can arrange data windows and diagram windows on the screen. You can save such a screen view by selecting the function "file / save view". In case that the view will be opened by "file /open view" the complete view will be restored, including all diagrams and adjustments.