

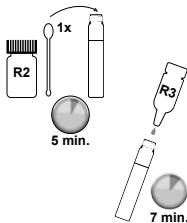
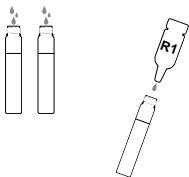


Ammonium test

For fresh water

Test preparation:

- 1 Fill both tubes up to the mark with the test water.
- 2 Put the contents of the **NH₄⁺ R1 ampule** into one of the two tubes (test), close with the screw top lid and mix.
- 3 Add **1 big** level measuring spoon of **NH₄⁺ R2** to the test, close with the screw top lid and dissolve by shaking.
Leave standing for 5 minutes.
- 4 Add the contents of the **NH₄⁺ R3 ampule** to the test, close with screw top lid and mix.
Leave standing for 7 minutes.



Measuring with AQUA-CHECK:

- 1 Reference measurement.
- 2 Test measurement.



You will find important information on your measurement value at www.aqua-check.de.
Please observe the safety notes for handling chemicals (see rear).



Ammonium test

Version 1.0 • 03/2012



Irritant

NH_4^+ R1 (ammonium test)

R36/38: Irritating to eyes and skin.

S2: Keep out of the reach of children.

S24/25: Avoid contact with skin and eyes.

S26: In case of contact with eyes, rinse immediately with plenty of water and seek medical advice.

S46: If swallowed, seek medical advice immediately and show this container or label.

NH_4^+ R2 (ammonium test)

R52/53: Harmful to aquatic organisms, may cause long-term adverse effects in the aquatic environment.

S2: Keep out of the reach of children.

S46: If swallowed, seek medical advice immediately and show this container or label.

S50: Do not mix with acid.



Harmful

NH_4^+ R3 (ammonium test)

R22: Harmful if swallowed.

R36/38: Irritating to eyes and skin.

R52/53: Harmful to aquatic organisms, may cause long-term adverse effects in the aquatic environment.

S2: Keep out of the reach of children.

S24/25: Avoid contact with skin and eyes.

S46: If swallowed, seek medical advice immediately and show this container or label.

Contains disodium pentacyanonitrosylferrat dihydrate

Take packaging with product residues to hazardous or special waste disposal.

Söll GmbH • Fuhrmannstraße 6 • D-95030 Hof • www.soelltec.de • Tel. +49(0)92 81/72 85-0
Söll hotline: 0 700/92 77 37 55 (14 cents/minute from a German landline)