



Chlorine test

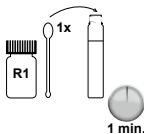
For fresh and salt water

Test preparation:

- 1 Fill both tubes up to the mark with the test water.



- 2 Add **1 big** level measuring spoon of Cl_2 to one of the two tubes (test), close with the screw top lid and dissolve by shaking.
Leave standing for 1 minute.



Measuring with AQUA-CHECK:

- 1 Reference measurement.
- 2 Test measurement.



You will find important information on your measurement value at www.aqua-check.de.
Please observe the safety notes for handling chemicals (see rear).



Chlorine test

Version 1.0 • 03/2012

Cl_2 (chlorine test)

S2: Keep out of the reach of children.

S25: Avoid contact with eyes.

S46: If swallowed, seek medical advice immediately and show this container or label.

Take packaging with product residues to hazardous or special waste disposal.

Söll GmbH • Fuhrmannstraße 6 • D-95030 Hof • www.soelltec.de • Tel. +49(0)92 81/72 85-0
Söll hotline: 0 700/92 77 37 55 (14 cents/minute from a German landline)

CLHM2-15961