

Si

Silicon test

For fresh and salt water


Test preparation:

1 Fill both tubes up to the mark with the test water.

2 Add **3 drops of Si R1** to one of the two tubes (test), close with the screw top lid and mix. Leave standing for 3 minutes.

3 Add the contents of the **Si R2 ampule** to the test, close with screw top lid and mix.

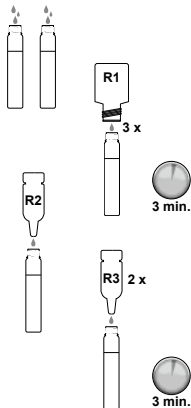
4 Add the contents of two **Si R3** ampules to the test, close with screw top lid and mix.


 Measure after exactly 3 minutes reaction time.

Measuring with AQUA-CHECK:

1 Reference measurement.

2 Test measurement.



 You will find important information on your measurement value at www.aqua-check.de. Please observe the safety notes for handling chemicals (see rear).

Si

Silicon test

Version 1.0 • 03/2012



Corrosive

Si R1 (silicon test)

R35: Causes severe burns.

S1/2: Keep locked up and out of the reach of children.

S26: In case of contact with eyes, rinse immediately with plenty of water and seek medical advice.

S30: Never add water to this product.

S45: In case of accident or if you feel unwell, seek medical advice immediately (show the label where possible).

Contains sulphuric acid



Irritant

Si R2 (silicon test)

R36: Irritating to eyes.

S2: Keep out of the reach of children.

S26: In case of contact with eyes, rinse immediately with plenty of water and seek medical advice.

S46: If swallowed, seek medical advice immediately and show this container or label.



Irritant

Si R3 (silicon test)

R35: Causes severe burns.

R52/53: Harmful to aquatic organisms, may cause long-term adverse effects in the aquatic environment.

S2: Keep out of the reach of children.

S24/25: Avoid contact with skin and eyes.

S46: If swallowed, seek medical advice immediately and show this container or label.

S50 Do not mix with acid.

Contains sodium sulphite. Can cause allergic reactions.

Take packaging with product residues to hazardous or special waste disposal.