

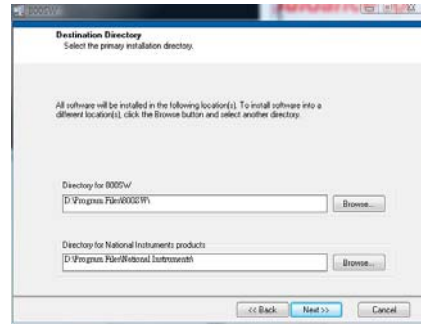
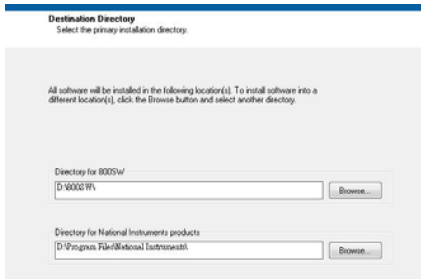
## Install PC software & USB driver

1. Put the disk in the disk drive. Following dialogue box will appear automatically. Please execute the “autorun.exe” if it does not appear.



- ## 2. Button explanations

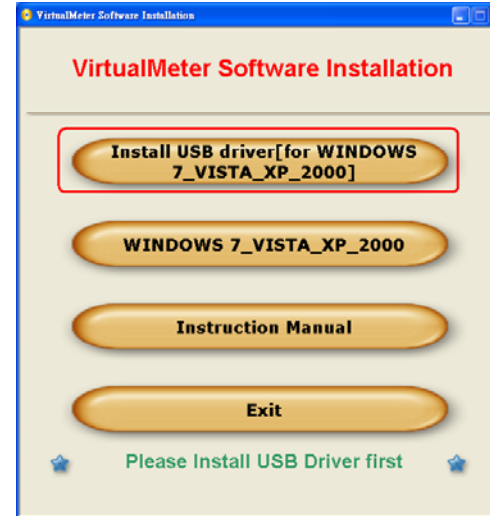
- **WINDOWS7\_VISTA:** install pc software for WINDOWS7 with VISTA.  
Directory setting for VISTA.  
Following window will come up automatically, when click the button “WINDOWS7\_VISTA\_XP\_2000”.



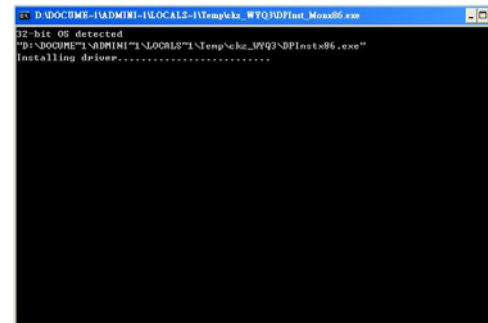
- **INSTALL USB driver (for WINDOWS\_VISTA\_XP\_2000):** Please refer to the **METER** and **USB DRIVER'S**
- **WINDOWS\_VISTA\_XP\_2000:** Install pc software for **WINDOWS VISTA XP 2000**
- **Instruction Manual:** Operation instruction manual.
- **EXIT:** Exit install program.

## For WINDOWS VISTA\_XP \_2000 and USB Driver's Installation

1. Connect meter to PC with USB cable. Following dialogue box will appear automatically. Please select “Install USB [for WINDOWS\_VISTA\_XP\_2000”to install.

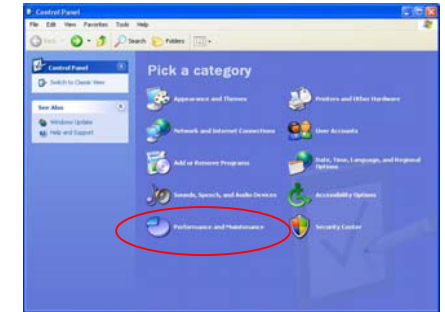


- ## 2. Installation.

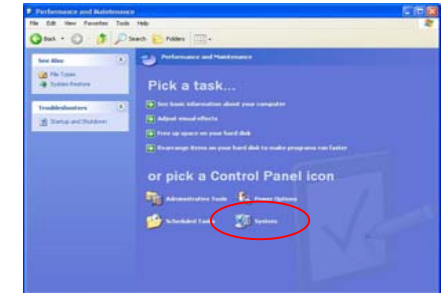


## SET CONNECTION PORT

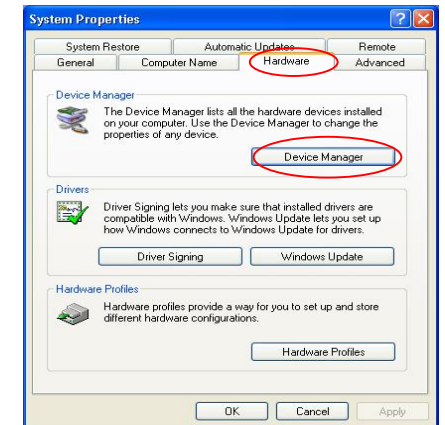
1. Start→Control Panel→Performance and Maintenance.



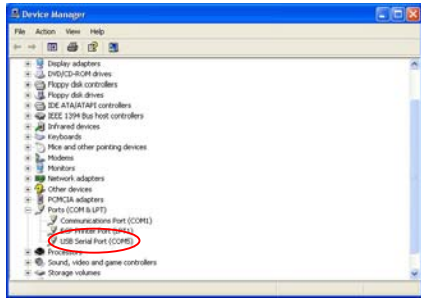
2. Select “System”.



3. Select “Hardware” → Device Manager.

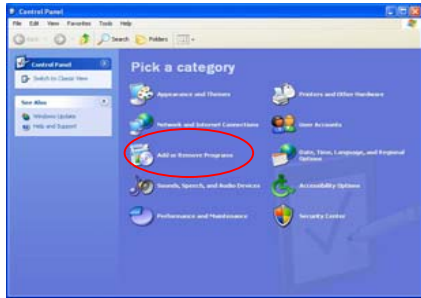


- In this window, you see the number of the port selected by system automatically. You can change it. Please write down the port number, it will be needed for manual connection.

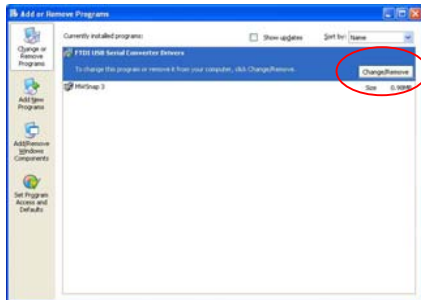


## Uninstallation of USB Driver

- Start→Setting→Control Panel→Add or Remove Programs→Change/Remove.



- Select "FTDI USB Serial Converter Drivers"→Change/Remove.



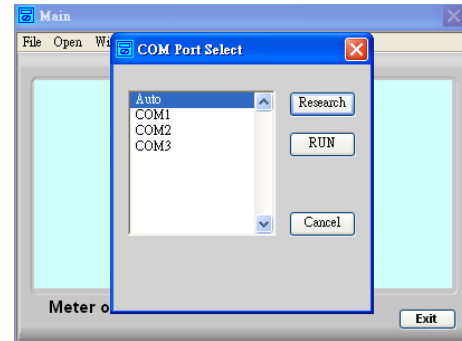
- Click "Yes".



## SOFTWARE OPERATION

### Com-Port Setup

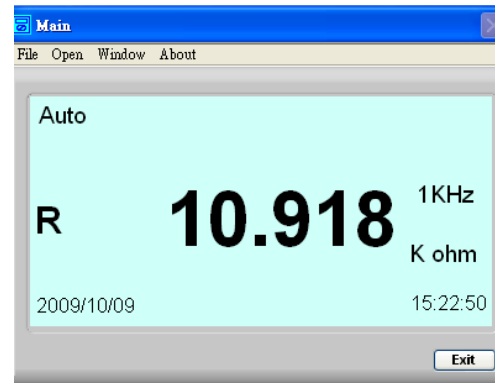
The user can setup the Com-Port parameter in this form.



### The Virtual Meter Software

When everything is done, the Virtual Meter software will work.

The form displays the values that appear on the LCR Meter. Then the user can use all the function that the Virtual Meter provided from the Menu Bar.

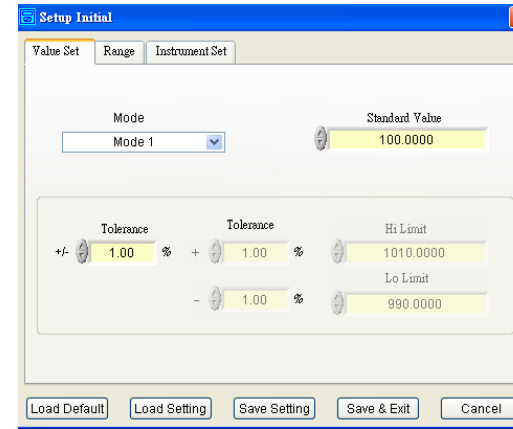


## Initial Setup

On the Virtual Meter Main Form please click the Menu Bar->File->Initial Setup.

### Value Set

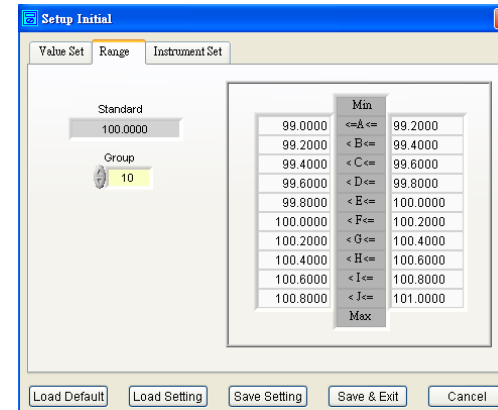
There are symmetrical, dissymmetrical, and direct inputs Hi/Lo Limits. The Go/No Go will be the basis of the three modes.



### Range

On the Virtual Meter Main Form please click the Menu Bar->File->Initial Setup-->Range. This form shows the current range and the group number (1~10) that the user can change. The Auto/Manual selection can calculate automatically or be changed by hand. When the left side value bigger than the right side value, the Wrong Range will light.

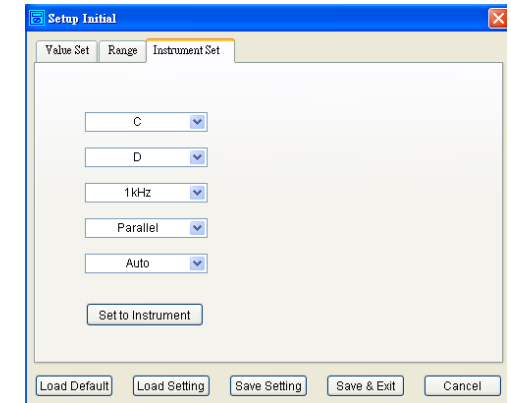
While the Wrong Range lights, user should adjust the value or there will be an error.



## Instrument Set

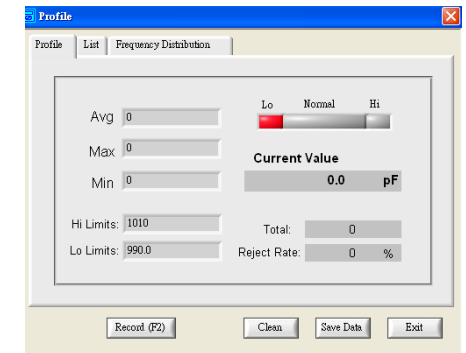
On the Virtual Meter Main Form please click the Menu Bar->File->Initial Setup->Instrument Set.

The user also can set the LCR Meter parameter (L/C/R, Q/D/R, Frequency, Parallel/Serail, Auto/Menu), then click "Set Instrument" button to set parameter into the LCR Meter.



## Profile

To click the Menu Bar->Open->Profile, and the Profile form will display as below. The function is to display the item values including current value, maximum (Max), minimum (Min), average (Avg), total number (Total), and Reject Rate.



## List

In the Virtual Meter Main Form, to click the Menu Bar->Open->Profile-->List, and the List Form will display as below.

The table displays the real-time data. To click "record" button, then the table will be added one data including No., Item (L/C/R), Value, Unit, Range, Q.C., Item (Q/D/R), and Value.

Profile

Profile List Frequency Distribution

| No. | Item | Value | Unit | Range | Q.C. |
|-----|------|-------|------|-------|------|
|     |      |       |      |       |      |
|     |      |       |      |       |      |
|     |      |       |      |       |      |
|     |      |       |      |       |      |
|     |      |       |      |       |      |
|     |      |       |      |       |      |
|     |      |       |      |       |      |
|     |      |       |      |       |      |
|     |      |       |      |       |      |
|     |      |       |      |       |      |
|     |      |       |      |       |      |
|     |      |       |      |       |      |
|     |      |       |      |       |      |
|     |      |       |      |       |      |
|     |      |       |      |       |      |

Record (F2) Clean Save Data Exit

## List (Save Data)

user can input information and save them into the report file.

**Report Save**

Report File

C:\Program Files\VirtualMeter\41-1009162420.txt

File Type

Text File (\*.txt)

Department

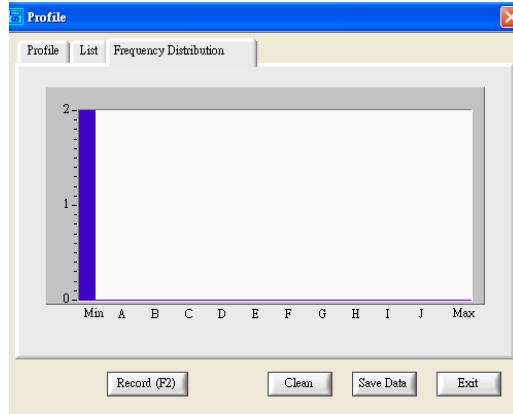
Tester

Description

Save Cancel

## Frequency Distribution

In the Main Form, to click the Menu Bar->Open->Profile->Frequency Distribution. And the Frequency Distribution will display. The vertical axle means number. The horizontal axle means distribution points.



## Sorting

Please click the Menu Bar->File->Sorting, and the Sorting form will display as below.

This form displays the current value, difference, total number, and standard value.

If the user zooms in or zooms out the Sorting Form, the font and the object size will be changed.

Sorting

| Standard | Current Value |
|----------|---------------|
| 120.0000 | 119.4 uH      |

Difference  
-0.5000 %

Lo A B C D E F G H I J Hi