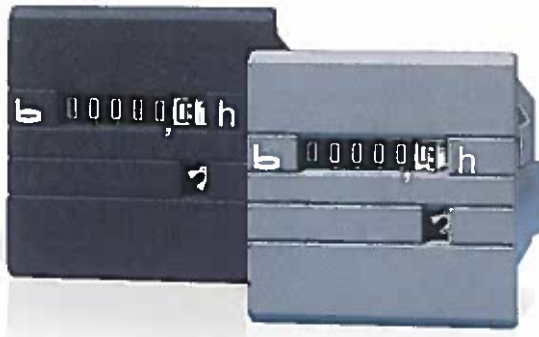


AC: 631.2 – 634.3

DC: 629.2 – 638.3

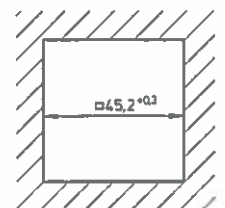
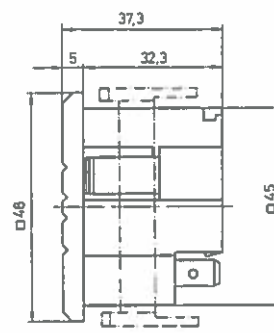
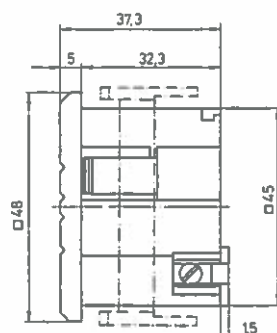


Hour counters, for AC or DC,  
front frame 48 x 48 mm,  
cutout  $\square 45,2^{+0,3}$  mm

The world-wide known BAUSER hour counters can be fast and easily mounted. As the counters are available in all current front dimensions, you do not require additional bezels.

AC	DC	Grey	Black	Terminal connection	Plug connection	Protection against accidental contact	
						With	Without
631.2	629.2	✓		✓		✓	
632.2	630.2		✓	✓		✓	
633.2	637.2	✓		✓			✓
634.2	638.2		✓	✓			✓
631.3	629.3	✓			✓	✓	
632.3	630.3		✓		✓	✓	
633.3	637.3	✓			✓		✓
634.3	638.3		✓		✓		✓

With or without protection against accidental contract



# Accessoires and technical specifications

For the products of page 12 – 15

Bezel 55 x 55 mm



Bezel 72 x 72 mm

Beside the standard program BAUSER offers you a range of individual special developments. Inform us about your requirements and ideas – we find a solution for you.

Our developing and production know-how is excellent. This was certified according ISO9001. That is why we can guarantee to our world-wide OEM customers high quality products in the shortest time.

	AC	DC
<b>Reset:</b>	No	No
<b>Counting range:</b>	99999,99 h	99999,99 h
<b>Digits:</b>	1,5 x 3,5 mm (with lens 4 mm), white on black, decimals black on white	1,5 x 3,5 mm (with lens 4 mm), white on black, decimals black on white
<b>Standard voltages:</b>	115 or 230 V AC	10 – 80 V DC (1,5 – 15 mA)
<b>Special voltages (at additional cost):</b>	12, 24, 36 – 48 and 400 V AC	80 – 220 V DC (1,5 – 4,5 mA)
<b>Voltage tolerance:</b>	±10 %	–
<b>Frequency:</b>	50 or 60 Hz (on request 50 and 60 Hz)	–
<b>Current consumption:</b>	approx. 10 mA at rated voltage	See above
<b>Protection class:</b>	DIN 40050, housing IP 65 (front) terminals: IP 20 (Variant VBG 4) IP 00 (without VBG 4)	DIN 40050, housing IP 65 (front) terminals: IP 20 (Variant VBG 4) IP 00 (without VBG 4)
<b>Testing voltage:</b>	Winding and contact against GND 2500 V/50 Hz	–
<b>Ambient temperature:</b>	–30 °C to +80 °C	–30 °C to +80 °C
<b>Fixing:</b>	Via included retaining clip*, panel thickness up to 10 mm, or via integrated snap-in lugs, panel thickness up to 2 mm, whereas the cutout should be 45,2 <sup>+0,3</sup> x 45,2 <sup>+0,3</sup> mm	Via included retaining clip*, panel thickness up to 10 mm, or via integrated snap-in lugs, panel thickness up to 2 mm, whereas the cutout should be 45,2 <sup>+0,3</sup> x 45,2 <sup>+0,3</sup> mm
<b>Connection:</b>	Terminals or plugs, with or without protection against accidental contact	Terminals or plugs, short circuit and reverse battery protected
<b>Approval:</b>	CE, optional UL and CSA	CE
<b>Operating indication:</b>	Yes	Yes
<b>Weight:</b>	approx. 46 g	approx. 46 g

## Accessoires and special types at additional cost:

- **Variants for 20 to 100 HZ operation:** Order code, i.e. 631/943
- **Bezel 55 x 55 mm:** Grey or black, fitting to the counter with front frame 48 x 48 mm
- **Bezel 72 x 72 mm:** Grey or black, fitting to the counter with front frame 48 x 48 mm
- **Blind cover 53 x 53 mm:** Suited for types with square cutout