

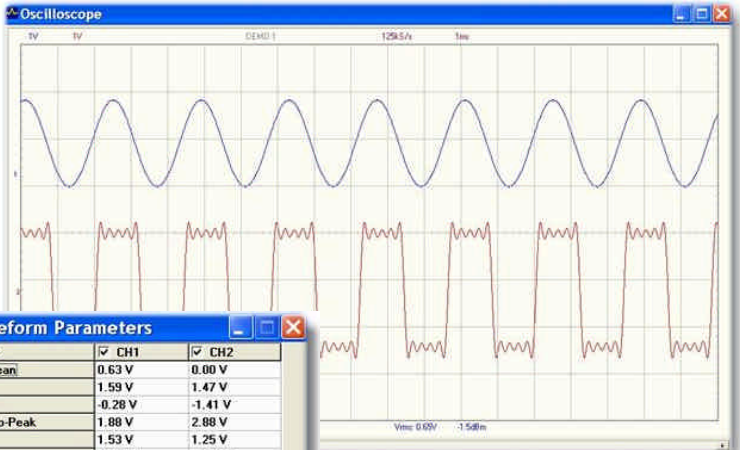


1GS/s USB Pc Storage Scope

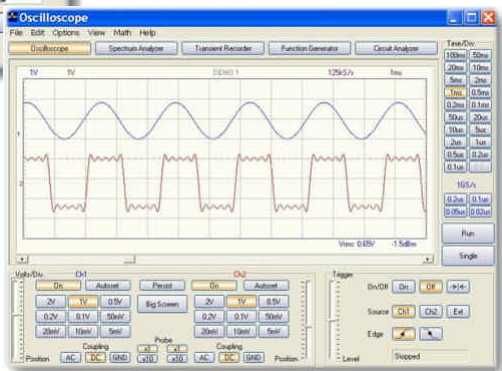
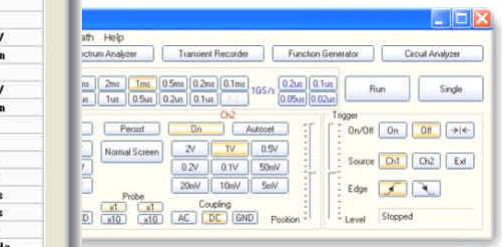
PCSU1000

USB

2.0 & 1.1 compatible



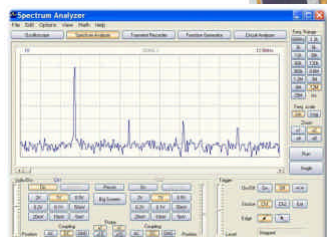
Waveform Parameters		
	CH1	CH2
Amplitude:		
✓ DC Mean	0.63 V	0.00 V
✓ Max	1.59 V	1.47 V
✓ Min	-0.28 V	-1.41 V
✓ Peak-to-Peak	1.88 V	2.88 V
✓ High	1.53 V	1.25 V
✓ Low	-0.22 V	-1.19 V
✓ Amplitude	1.75 V	2.44 V
✓ AC RMS	0.65 V	1.19 V
✓ AC dBV	-3.70 dBV	1.50 dBV
✓ AC dBm	-1.48 dBm	3.72 dBm
✓ AC+DC RMS	0.91 V	1.19 V
✓ AC+DC dBV	-0.784 dBV	1.50 dBV
✓ AC+DC dBm	1.43 dBm	3.72 dBm
Timing:		
✓ Duty Cycle	49.5 %	50.0 %
✓ Positive Width	1.19 ms	1.20 ms
✓ Negative Width	1.21 ms	1.20 ms
✓ Rise Time	0.688 ms	0.120 ms
✓ Fall Time	0.672 ms	0.104 ms
✓ Period	2.40 ms	2.40 ms
✓ Frequency	0.417 kHz	0.417 kHz
✓ Phase	19.9 deg	-19.9 deg



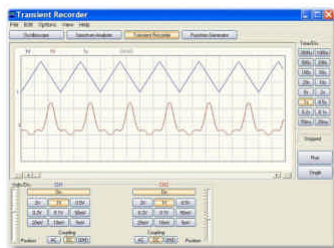
Oscilloscope



Small and stylish, Space saving design



Spectrum analyser



Transient Recorder

Specifications:

- Inputs: 2 channels, 1 external trigger input
- Input impedance : 1 Mohm / 30pF
- Frequency response ±3dB: DC to 60 MHz
- Maximum input voltage : 30V (AC + DC)
- Input coupling : DC, AC and GND
- Supply from USB port (500mA)
- Needs Win98SE or higher
- Sampling frequency: Real time 1.25kHz to 50MHz
- Sampling frequency: Repetitive: 1GHz
- Record length: 4K samples / channel
- Input sensitivity : 5mV to 2V/division
- Auto set-up function and X10 option
- Pre-trigger function
- On screen markers
- Recording of data and screens
- Extended waveform parameter display
- Big screen function

- In the box:**
- ✓ USB PC oscilloscope
 - ✓ 60MHz scope probe (x2)
 - ✓ USB cable
 - ✓ Software on CD
 - ✓ Getting started manual
 - ✓ Manuals on CD