

# Accessories

## Mounting frame

## Details

### Dimensions / Details

#### Mounting frame with cut-out 92 x 45 mm [3.62 x 1.77"]

for counters 96 x 48 mm [3.78 x 1.89"]



#### description:

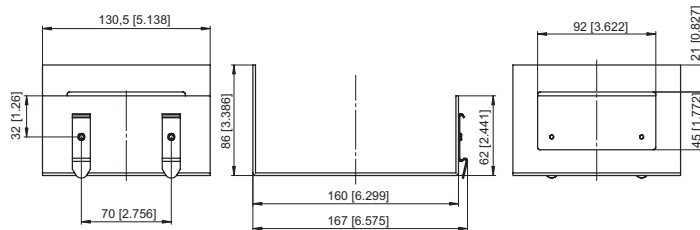
for snap-on mounting on  
35 mm [1.38"] top-hat DIN rail

#### suitable for:

Codix 54x, 55x, 56x, 57x      grey

#### Order-No.

**G300005**



#### Mounting frame with cut-out 50 x 50 mm [1.97 x 1.97"] (cut-out 45 x 45 mm [1.77 x 1.77"] via supplied adapter)

for counters 48 x 48 mm [1.89 x 1.89"], 53 x 53 mm  
[2.09 x 2.09"] and 55 x 55 mm [2.16 x 2.16"]



#### description:

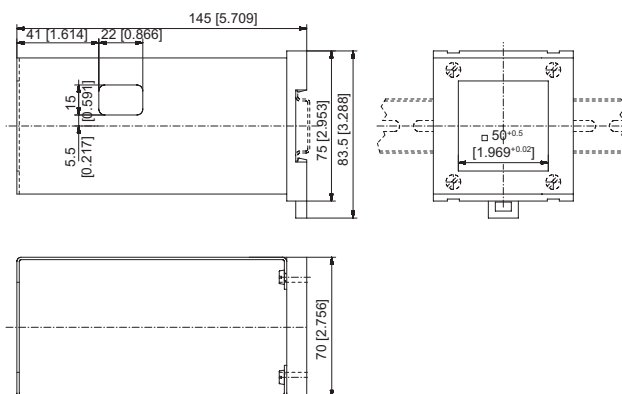
for snap-on mounting on  
35 mm [1.38"] top-hat DIN rail

#### suitable for:

901, Codix 716 / 717,      chromated  
Codix 923 / 924, Codix 907 / 908,  
H 57, HC 77, HW 66, HW 66 M,  
BVa 15.21, HVa 15.21,  
MV's 16.2x

#### Order-No.

**G300003**



#### Mounting frame with cut-out 50 x 25 mm [1.97 x 0.98"] (cut-out 45 x 22.2 mm [1.77 x 0.94"] via separate adapter)

for counters 53 x 28 mm [2.09 x 1.10"]  
and via separate adapter (T008180) for counters  
48 x 24 mm [1.89 x 0.94"]



#### description:

for snap-on mounting on  
35 mm [1.38"] top-hat DIN rail

#### suitable for:

B 1x.2x, HB 2x.2x.      chromated  
via adapter:  
Codix 13x, 14x, 52x, 53x,  
W 15.5, W 16.5, W 17.5,  
H 37, H 37.5

#### Order-No.

**G300004**

