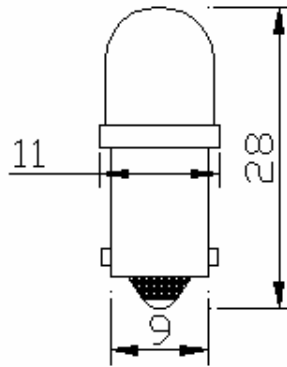


## SPECIFICATIONS

(A) Electronics and Optical Characteristics: Ta=25°C

PART NO	Emitting Color	Forward Voltage Unit: V	Totality Luminous Intensity Unit: LM	Single LED Axial Intensity Unit: mcd	Dominant Wavelength Unit: nm	Viewing Angle Unit: deg	Color Temperature Unit: K °
725789	Red	24	0.5	3000	630	28	<1500
725802	Yellow	24	0.4	2500	590	28	<1500
725816	Ultra Green	24	1.0	15000	525	13	7400
725829	Blue	24	0.3	6000	470	15	>25000
725842	White	24	1.4	12000	X:0.25 Y:0.25	21	24993
<b>Test Condition</b>		<b>IF=10mA</b>	<b>IF=10mA</b>	<b>IF=20mA</b>	<b>IF=20mA</b>	<b>IF=20mA</b>	
<b>IR max: 0.01mA ; VR=5V</b>							



### (B) Absolute Maximum Ratings AT Ta=25°C

PARAMETER	MAX	UNIT
Power Dissipation	120	mW
Continuous Forward Current	25	mA
Peak Forward Current (1/10 Duty Cycle 0.1ms Pulse Width)	100	mA
Reverse Voltage	5	V
Operating Temperature Range	-30°C to +85°C	
Storage Temperature Range	-40°C to +100°C	
<b>Lead Solder Temperature 1.6mm Below Package 260°C For 5 seconds</b>		